

		Contraceptive prevalence rate	Skilled attendant at delivery	C-section rate	Antenatal care (4+ visits)	Early initiation of breastfeeding	Postnatal care for babies born at home	Postnatal care for all babies*	Family planning needs satisfied	Improved water sources	DPT3 vaccine	Measles vaccine	BCG vaccine	Vitamin A administration	ORT and continued feeding	Care seeking for pneumonia	Insecticide-treated use by children	Co-coverage (6 or more)	Coverage gap	Mean coverage
Child's sex	Male	NA	47,3%	2,9%	59,6%	56,1%	ND	ND	NA	NA	20,8%	84,9%	92,0%	77,6%	55,4%	64,9%	28,8%	7,2%	NA	NA
	Female	NA	45,9%	3,0%	57,8%	57,1%	ND	ND	NA	NA	20,5%	85,0%	92,6%	74,7%	56,8%	64,5%	26,7%	6,8%	NA	NA
Region of residence	Urban	48,4%	83,3%	6,3%	59,7%	58,8%	ND	ND	67,5%	82,2%	26,9%	88,6%	94,7%	76,3%	59,0%	66,2%	29,1%	12,8%	NA	NA
	Rural	36,7%	31,4%	1,6%	58,2%	55,6%	ND	ND	56,5%	19,6%	18,3%	83,6%	91,4%	76,1%	54,8%	64,1%	27,2%	4,6%	NA	NA
Wealth quintiles	Q1	40,5%	27,0%	1,2%	55,8%	56,0%	ND	ND	60,5%	10,3%	17,8%	87,6%	94,8%	80,0%	53,2%	63,3%	18,3%	3,8%	46,3%	53,7%
	Q2	34,2%	27,8%	1,2%	57,4%	55,6%	ND	ND	52,1%	16,3%	14,9%	79,6%	88,5%	76,8%	56,9%	62,9%	31,3%	4,3%	49,0%	51,0%
	Q3	31,3%	36,5%	1,4%	60,1%	56,7%	ND	ND	51,3%	26,2%	21,5%	81,6%	88,9%	72,5%	51,1%	66,6%	30,9%	5,4%	47,0%	53,0%
	Q4	44,3%	71,5%	4,6%	58,3%	57,6%	ND	ND	63,5%	63,9%	23,3%	85,2%	94,9%	72,4%	56,7%	69,1%	29,6%	8,5%	38,0%	62,0%
	Q5	54,2%	91,7%	9,0%	63,3%	57,4%	ND	ND	74,1%	92,7%	30,6%	94,5%	96,4%	80,0%	65,2%	61,1%	31,1%	17,4%	30,6%	69,4%
Maternal education	A	35,0%	23,6%	0,8%	53,5%	57,0%	ND	ND	55,9%	NO	16,1%	82,4%	89,6%	69,0%	50,5%	64,9%	21,0%	2,8%	NA	NA
	B	36,9%	38,3%	2,2%	57,4%	56,0%	ND	ND	56,0%	NO	19,9%	83,5%	92,7%	74,5%	57,8%	58,7%	26,4%	5,8%	NA	NA
	C	43,6%	57,5%	3,4%	59,5%	56,4%	ND	ND	63,2%	NO	20,7%	86,0%	92,3%	79,9%	56,0%	71,8%	30,0%	7,8%	NA	NA
	D	56,2%	92,8%	11,5%	72,2%	61,4%	ND	ND	76,5%	NO	41,1%	96,4%	96,4%	78,7%	57,3%	65,3%	41,6%	22,3%	NA	NA
Country region	central	32,8%	33,7%	1,2%	52,9%	56,4%	ND	ND	53,3%	45,6%	14,4%	91,6%	93,0%	71,9%	55,9%	62,8%	27,5%	5,8%	NA	NA
	copperbelt	47,7%	75,7%	6,9%	60,9%	49,2%	ND	ND	63,7%	66,8%	24,0%	87,0%	94,8%	77,6%	59,8%	58,7%	31,8%	11,3%	NA	NA
	eastern	52,6%	43,0%	1,8%	61,5%	64,9%	ND	ND	68,5%	16,5%	17,9%	89,0%	98,0%	73,8%	73,3%	82,2%	20,5%	5,2%	NA	NA
	luapula	15,8%	33,9%	3,1%	64,6%	62,9%	ND	ND	31,3%	32,0%	22,5%	75,8%	84,1%	84,8%	53,4%	50,9%	54,8%	8,0%	NA	NA
	lusaka	46,1%	77,6%	6,4%	56,3%	59,8%	ND	ND	68,2%	83,8%	33,8%	91,9%	94,1%	73,0%	59,0%	71,7%	22,8%	10,9%	NA	NA
	northern	37,7%	29,5%	1,6%	58,3%	52,2%	ND	ND	56,3%	20,6%	17,9%	71,1%	81,9%	67,8%	57,2%	58,8%	26,4%	4,1%	NA	NA
	northwestern	32,0%	40,6%	0,8%	57,6%	42,6%	ND	ND	56,0%	16,9%	17,7%	78,0%	93,7%	80,8%	62,0%	58,6%	27,9%	4,4%	NA	NA
	southern	45,8%	36,4%	2,0%	58,7%	66,4%	ND	ND	63,8%	38,9%	20,5%	92,4%	97,8%	78,6%	30,9%	75,4%	17,1%	6,2%	NA	NA
western	33,1%	42,3%	1,1%	55,3%	48,4%	ND	ND	60,2%	30,0%	19,4%	93,1%	97,4%	85,8%	52,0%	70,2%	29,1%	7,3%	NA	NA	
Overall		40,8%	46,6%	3,0%	58,7%	56,6%	ND	ND	60,6%	41,9%	20,6%	84,9%	92,3%	76,1%	56,1%	64,7%	27,8%	7,0%	42,9%	57,1%
Q5/Q1 ratio		1,34	3,40	7,74	1,13	1,02	ND	ND	1,22	8,99	1,71	1,08	1,02	1,00	1,23	0,96	1,70	4,62	0,66	1,29
Q5-Q1 difference		13,8	64,7	7,9	7,5	1,3	ND	ND	13,6	82,4	12,7	6,8	1,6	0,0	12,0	-2,2	12,7	13,6	-15,8	15,8
Slope index		20,9	80,4	8,3	7,2	2,4	ND	ND	22,1	106,7	15,0	6,4	3,5	-4,5	9,6	2,8	12,4	13,5	NA	NA
Concentration index		6,8	27,7	46,2	2,9	0,7	ND	ND	4,9	42,3	12,2	1,0	0,2	-0,9	2,4	1,4	8,5	31,7	NA	NA

	Q1	Q2	Q3	Q4	Q5
Mean coverage	53,7%	51,0%	53,0%	62,0%	69,4%
Coverage gap	46,3%	49,0%	47,0%	38,0%	30,6%

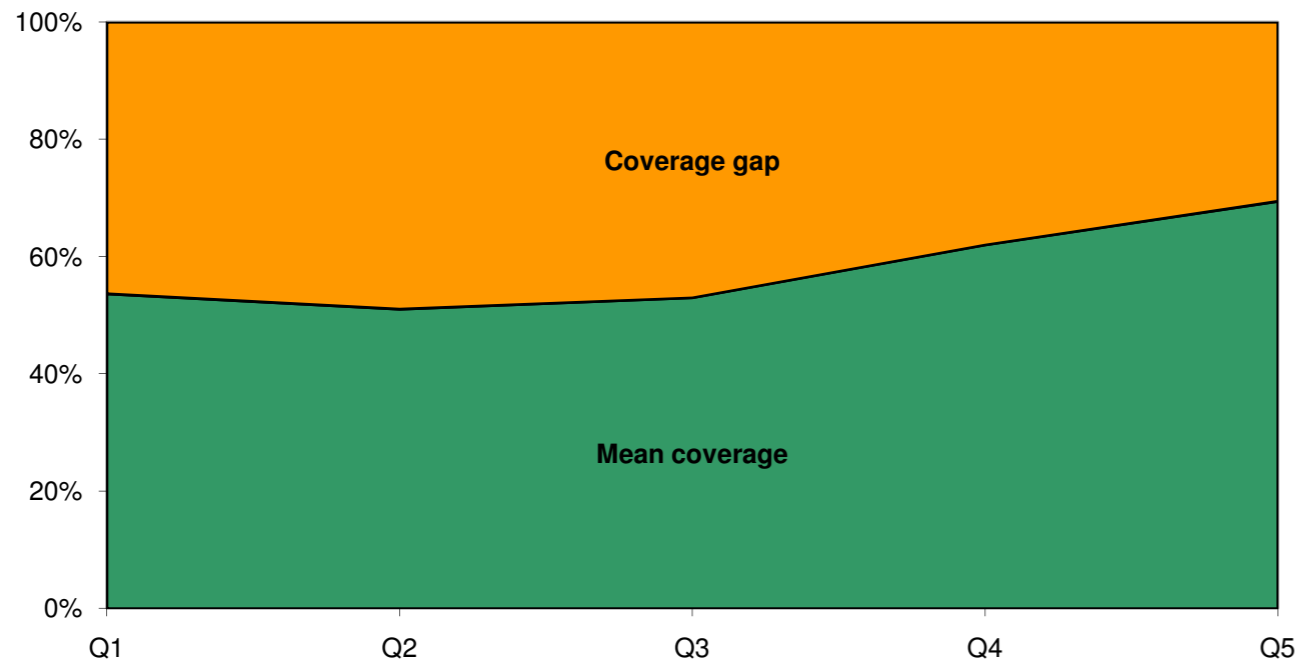


Fig 1. Mean coverage of selected interventions and corresponding coverage gap (how much is needed to reach universal coverage), by wealth quintile.

	Antenatal care (4+ visits)	Skilled attendant at delivery	Care seeking for pneumonia	ORT and continued feeding	BCG vaccine	DPT3 vaccine	Measles vaccine	Family planning needs satisfied
Poorest quintile	55,8	27,0	63,3	53,2	94,8	17,8	87,6	60,5
Richest quintile	7,5	64,7	2,2	12,0	1,6	12,7	6,8	13,6
Richest quintile	63,3	91,7	61,1	65,2	96,4	30,6	94,5	74,1

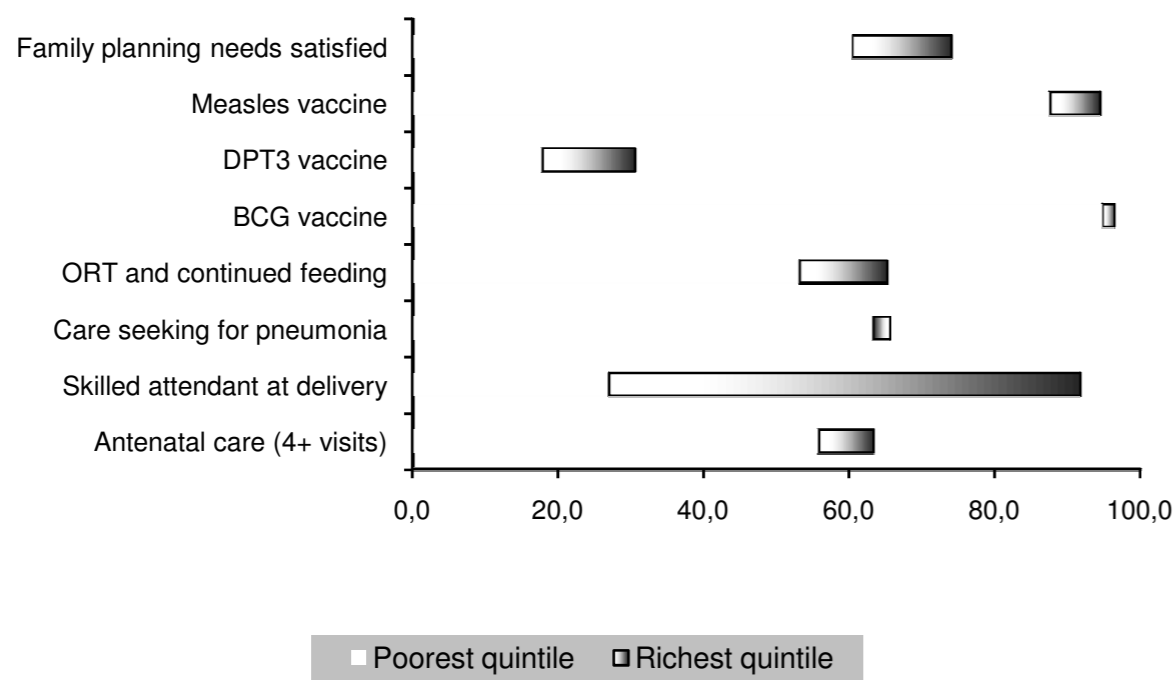


Fig 2. Coverage levels in the poorest and richest quintiles for selected interventions along the continuum of care.

Co-coverage int	Wealth quintile				
	Q1	Q2	Q3	Q4	Q5
0	0,161	0,170	0,095	0,028	0,001
1	0,277	0,222	0,239	0,118	0,032
2	0,198	0,231	0,233	0,267	0,167
3	0,147	0,149	0,172	0,212	0,254
4	0,113	0,094	0,119	0,166	0,254
5	0,066	0,090	0,086	0,125	0,119
6	0,029	0,031	0,043	0,052	0,082
7	0,008	0,010	0,007	0,022	0,073
8	0,000	0,002	0,004	0,011	0,015
9	0,000	0,000	0,000	0,001	0,003
Total	1,000	1,000	1,000	1,000	1,000

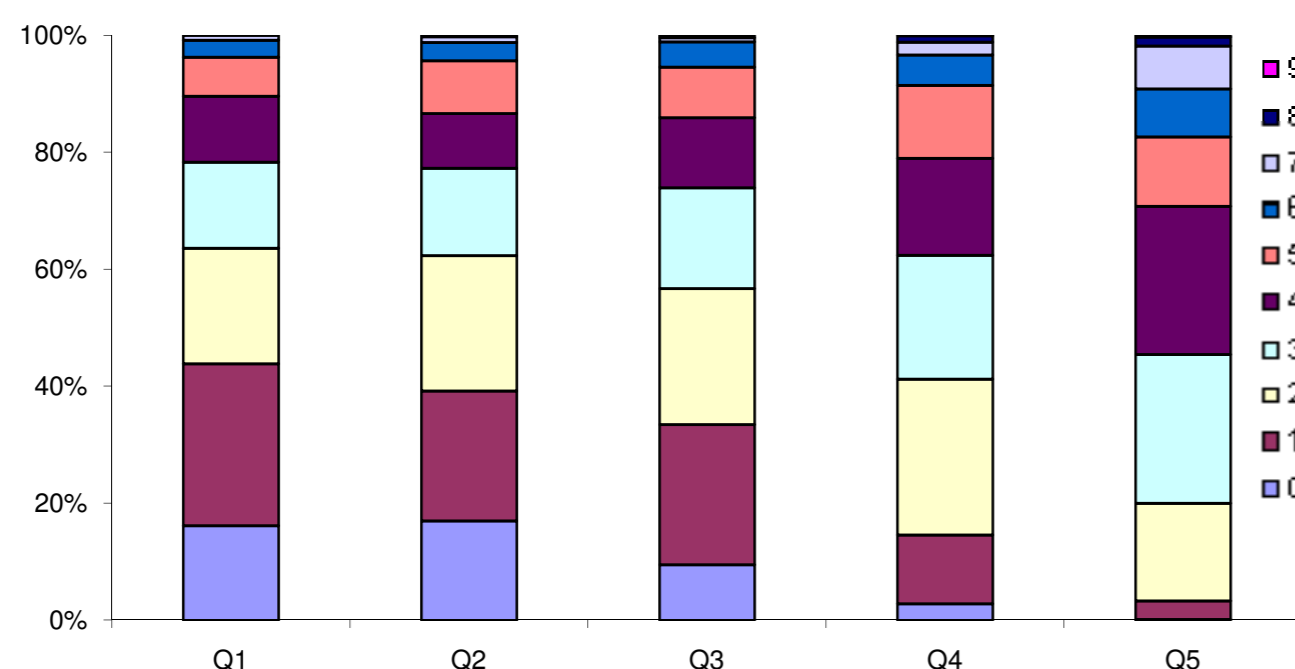


Fig 3. Percentage of children aged 1-4 years according to the number of key child-survival interventions received, by wealth quintile.