



## Country profiles

The information in the country profiles, customized to showcase the core indicators selected by the Commission on Information and Accountability for Women's and Children's Health, is intended to help policy makers and their partners assess progress and prioritize actions to save women's and children's lives. These country profiles reflect the data that are available for each country. Most of the data for the Commission indicators come from household surveys: mainly the USAID-supported Demographic and Health Surveys and the UNICEF-supported Multiple Indicator Cluster Surveys.<sup>xxix</sup> More information on the data sources for the Commission indicators is available in the annexes to previous Countdown reports: [www.countdown2015mnch.org/reports-and-articles](http://www.countdown2015mnch.org/reports-and-articles).

New survey data are available for 22 countries since the publication of Countdown's 2012 Report. Coverage estimates that are missing or that are more than five years old indicate an urgent need for concerted action to increase data collection efforts so that updated evidence is available for policy and program development.

This report contains profiles for 75 countries with high burdens of maternal and/or child mortality, including the 49 lowest-income countries covered by the Global Strategy for Women's and Children's Health. Profiles are included for the following countries:

Afghanistan	Gambia	Nigeria
Angola	Ghana	Pakistan
Azerbaijan	Guatemala	Papua New Guinea
Bangladesh	Guinea	Peru
Benin	Guinea-Bissau	Philippines
Bolivia	Haiti	Rwanda
Botswana	India	São Tomé and Príncipe
Brazil	Indonesia	Senegal
Burkina Faso	Iraq	Sierra Leone
Burundi	Kenya	Solomon Islands
Cambodia	Korea, Democratic People's Republic of	Somalia
Cameroon	Kyrgyzstan	South Africa
Central African Republic	Lao People's Democratic Republic	South Sudan
Chad	Lesotho	Sudan
China	Liberia	Swaziland
Comoros	Madagascar	Tajikistan
Congo	Malawi	Tanzania, United Republic of
Congo, Democratic Republic of the	Mali	Togo
Côte d'Ivoire	Mauritania	Turkmenistan
Djibouti	Mexico	Uganda
Egypt	Morocco	Uzbekistan
Equatorial Guinea	Mozambique	Vietnam
Eritrea	Myanmar	Yemen
Ethiopia	Nepal	Zambia
Gabon	Niger	Zimbabwe



# Countdown to 2015

Maternal, Newborn & Child Survival

## Afghanistan

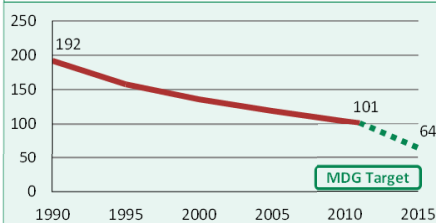
May 2013

### DEMOGRAPHICS

Total population (000)	32,358	(2011)
Total under-five population (000)	5,705	(2011)
Births (000)	1,408	(2011)
Birth registration (%)	37	(2010-2011)
Total under-five deaths (000)	128	(2011)
Neonatal deaths: % of all under-5 deaths	40	(2011)
Neonatal mortality rate (per 1000 live births)	36	(2011)
Infant mortality rate (per 1000 live births)	73	(2011)
Stillbirth rate (per 1000 total births)	29	(2009)
Total maternal deaths	6,400	(2010)
Lifetime risk of maternal death (1 in N)	32	(2010)
Total fertility rate (per woman)	6.2	(2011)
Adolescent birth rate (per 1000 women)	90	(2008)

#### Under-five mortality rate

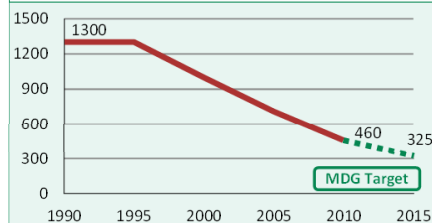
Deaths per 1000 live births



Source: IGME 2012

#### Maternal mortality ratio

Deaths per 100,000 live births

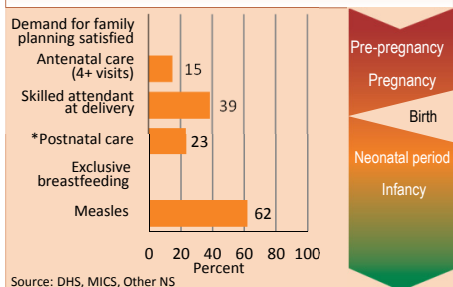


Source: MMEIG 2012

Note: MDG target calculated by Countdown to 2015.

### MATERNAL AND NEWBORN HEALTH

#### Coverage along the continuum of care

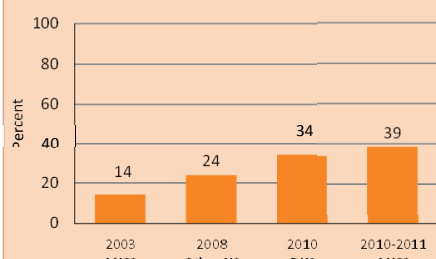


Source: DHS, MICS, Other NS

\* See Annex/website for indicator definition

#### Skilled attendant at delivery

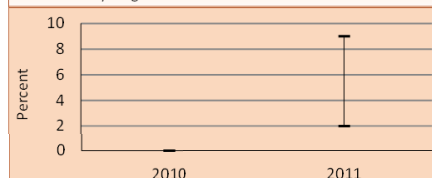
Percent live births attended by skilled health personnel



#### Prevention of mother-to-child transmission of HIV

Eligible HIV+ pregnant women receiving ART for their own health (% of total ARVs)

■ Percent HIV+ pregnant women receiving ARVs for PMTCT  
□ Uncertainty range around the estimate

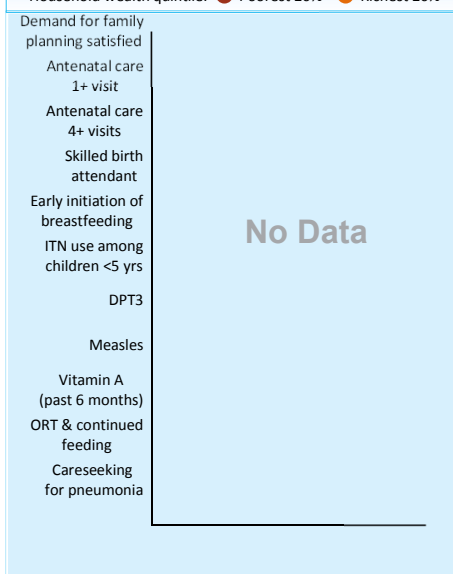


Source: UNICEF/UNAIDS/WHO

### EQUITY

#### Socioeconomic inequities in coverage

Household wealth quintile: ● Poorest 20% ● Richest 20%



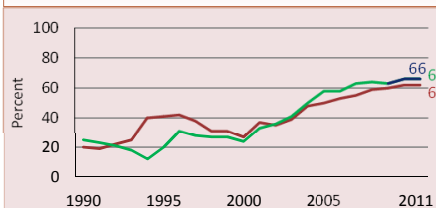
Coverage levels are shown for the poorest 20% (red circles) and the richest 20% (orange circles). The longer the line between the two groups, the greater the inequality. These estimates may differ from other charts due to differences in data sources.

Developed by Countdown to report on core indicators identified by the UN Commission on Information and Accountability, in support of the Global Strategy for Women's and Children's Health

### CHILD HEALTH

#### Immunization

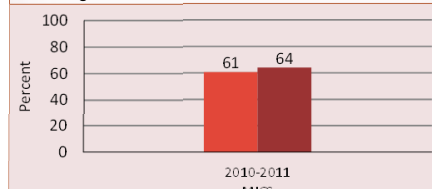
■ Percent of children immunized against measles  
■ Percent of children immunized with 3 doses DTP  
■ Percent of children immunized with 3 doses Hib



Source: WHO/UNICEF

#### Pneumonia treatment

■ Percent children <5 years with suspected pneumonia taken to appropriate health provider  
■ Percent children <5 years with suspected pneumonia receiving antibiotics



MICS

### NUTRITION

Wasting prevalence (moderate and severe, %) 9 (2004)

Low birthweight incidence (moderate and severe, %) -

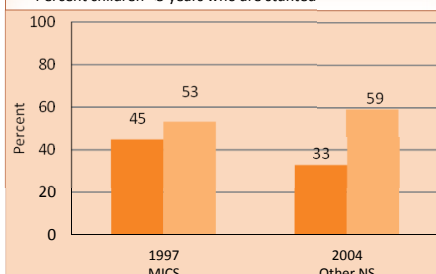
Early initiation of breastfeeding (within 1 hr of birth, %) -

Introduction of solid, semi-solid/soft foods (%) 29 (2003)

Vitamin A two dose coverage (%) 100 (2011)

#### Underweight and stunting prevalence

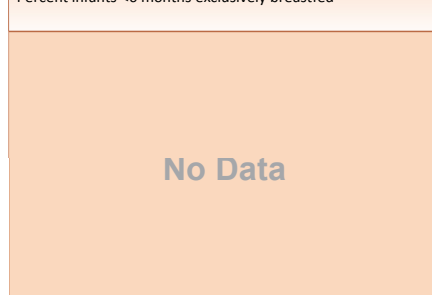
■ Percent children <5 years who are underweight  
■ Percent children <5 years who are stunted



Note: Based on 2006 WHO reference population

#### Exclusive breastfeeding

Percent infants <6 months exclusively breastfed



No Data



# Countdown to 2015

## Maternal, Newborn & Child Survival

# Angola

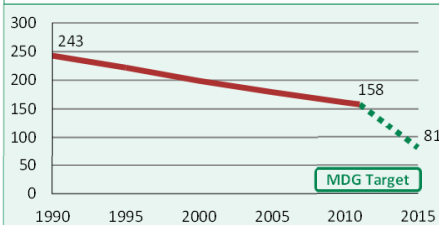
May 2013

## DEMOGRAPHICS

Total population (000)	19,618	(2011)
Total under-five population (000)	3,392	(2011)
Births (000)	803	(2011)
Birth registration (%)	29	(2011)
Total under-five deaths (000)	120	(2011)
Neonatal deaths: % of all under-5 deaths	29	(2011)
Neonatal mortality rate (per 1000 live births)	43	(2011)
Infant mortality rate (per 1000 live births)	96	(2011)
Stillbirth rate (per 1000 total births)	25	(2009)
Total maternal deaths	3,600	(2010)
Lifetime risk of maternal death (1 in N)	39	(2010)
Total fertility rate (per woman)	5.3	(2011)
Adolescent birth rate (per 1000 women)	165	(2005)

### Under-five mortality rate

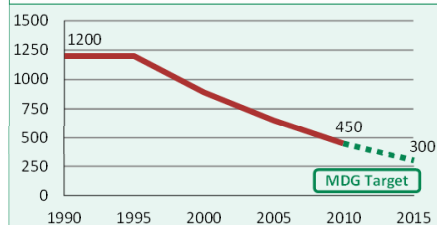
Deaths per 1000 live births



Source: IGME 2012

### Maternal mortality ratio

Deaths per 100,000 live births

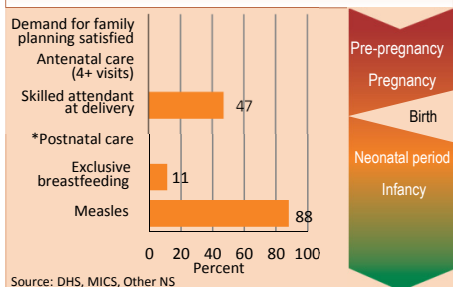


Source: MMEIG 2012

Note: MDG target calculated by Countdown to 2015.

## MATERNAL AND NEWBORN HEALTH

### Coverage along the continuum of care

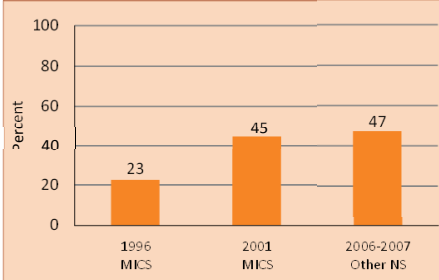


Source: DHS, MICS, Other NS

\* See Annex/website for indicator definition

### Skilled attendant at delivery

Percent live births attended by skilled health personnel

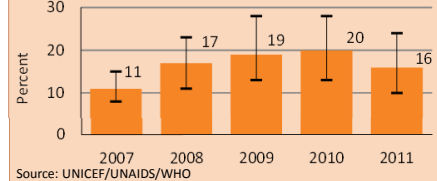


### Prevention of mother-to-child transmission of HIV

Eligible HIV+ pregnant women receiving ART for their own health (% of total ARVs)

Percent HIV+ pregnant women receiving ARVs for PMTCT

Uncertainty range around the estimate

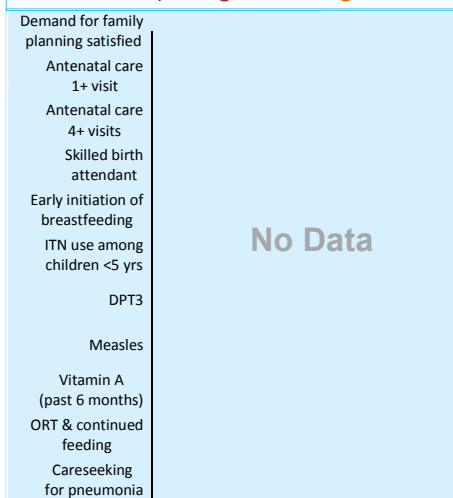


Source: UNICEF/UNAIDS/WHO

## EQUITY

### Socioeconomic inequities in coverage

Household wealth quintile: Poorest 20% Richest 20%



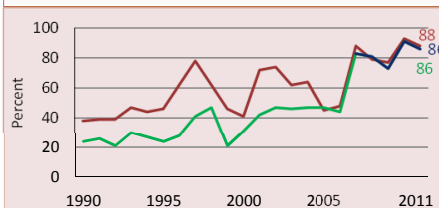
Coverage levels are shown for the poorest 20% (red circles) and the richest 20% (orange circles). The longer the line between the two groups, the greater the inequality. These estimates may differ from other charts due to differences in data sources.

Developed by Countdown to report on core indicators identified by the UN Commission on Information and Accountability, in support of the Global Strategy for Women's and Children's Health

## CHILD HEALTH

### Immunization

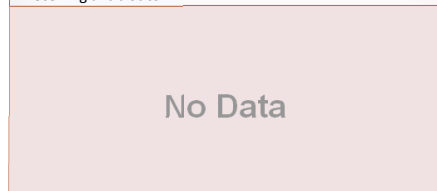
Percent of children immunized against measles  
Percent of children immunized with 3 doses DTP  
Percent of children immunized with 3 doses Hib



Source: WHO/UNICEF

### Pneumonia treatment

Percent children <5 years with suspected pneumonia taken to appropriate health provider  
Percent children <5 years with suspected pneumonia receiving antibiotics



No Data

## NUTRITION

Wasting prevalence (moderate and severe, %)

8

(2001)

Low birthweight incidence (moderate and severe, %)

12

(2001)

Early initiation of breastfeeding (within 1 hr of birth, %)

-

Introduction of solid, semi-solid/soft foods (%)

-

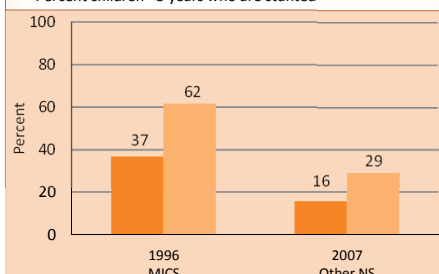
Vitamin A two dose coverage (%)

55

(2011)

### Underweight and stunting prevalence

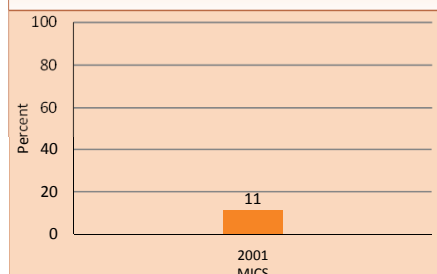
Percent children <5 years who are underweight  
Percent children <5 years who are stunted



Note: Based on 2006 WHO reference population

### Exclusive breastfeeding

Percent infants <6 months exclusively breastfed





# Countdown to 2015

Maternal, Newborn & Child Survival

## Azerbaijan

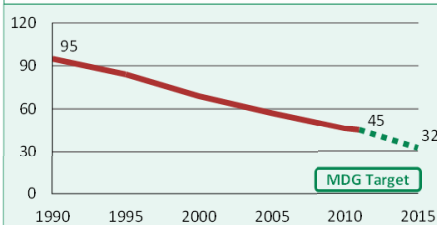
May 2013

### DEMOGRAPHICS

Total population (000)	9,306	(2011)
Total under-five population (000)	846	(2011)
Births (000)	184	(2011)
Birth registration (%)	94	(2006)
Total under-five deaths (000)	8	(2011)
Neonatal deaths: % of all under-5 deaths	42	(2011)
Neonatal mortality rate (per 1000 live births)	19	(2011)
Infant mortality rate (per 1000 live births)	39	(2011)
Stillbirth rate (per 1000 total births)	12	(2009)
Total maternal deaths	79	(2010)
Lifetime risk of maternal death (1 in N)	1,000	(2010)
Total fertility rate (per woman)	2.2	(2011)
Adolescent birth rate (per 1000 women)	41	(2009)

#### Under-five mortality rate

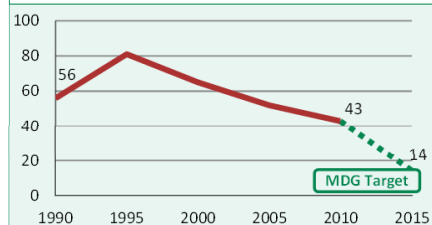
Deaths per 1000 live births



Source: IGME 2012

#### Maternal mortality ratio

Deaths per 100,000 live births

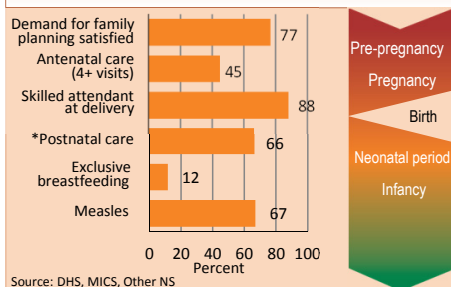


Source: MMEIG 2012

Note: MDG target calculated by Countdown to 2015.

### MATERNAL AND NEWBORN HEALTH

#### Coverage along the continuum of care

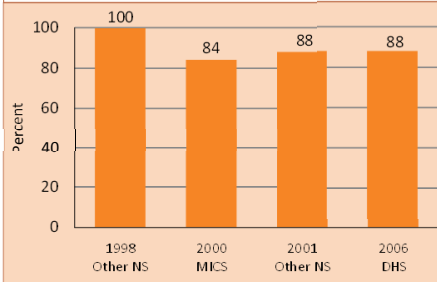


Source: DHS, MICS, Other NS

\* See Annex/website for indicator definition

#### Skilled attendant at delivery

Percent live births attended by skilled health personnel

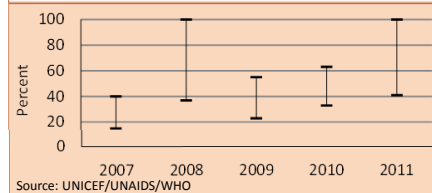


Source: DHS, MICS, Other NS

#### Prevention of mother-to-child transmission of HIV

Eligible HIV+ pregnant women receiving ART for their own health (% of total ARVs)

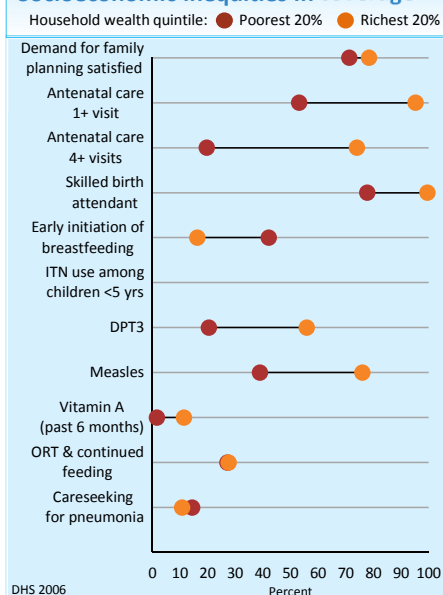
■ Percent HIV+ pregnant women receiving ARVs for PMTCT  
■ Uncertainty range around the estimate



Source: UNICEF/UNAIDS/WHO

### EQUITY

#### Socioeconomic inequities in coverage



DHS 2006

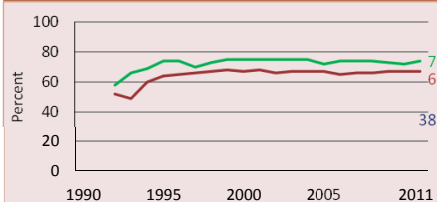
Coverage levels are shown for the poorest 20% (red circles) and the richest 20% (orange circles). The longer the line between the two groups, the greater the inequality. These estimates may differ from other charts due to differences in data sources.

Developed by Countdown to report on core indicators identified by the UN Commission on Information and Accountability, in support of the Global Strategy for Women's and Children's Health

### CHILD HEALTH

#### Immunization

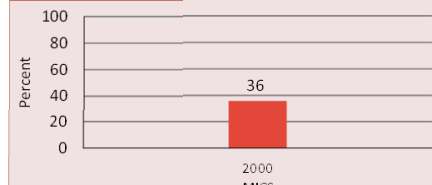
■ Percent of children immunized against measles  
■ Percent of children immunized with 3 doses DTP  
■ Percent of children immunized with 3 doses Hib



Source: WHO/UNICEF

#### Pneumonia treatment

■ Percent children <5 years with suspected pneumonia taken to appropriate health provider  
■ Percent children <5 years with suspected pneumonia receiving antibiotics



Source: MICS

### NUTRITION

Wasting prevalence (moderate and severe, %) 7 (2006)

Low birthweight incidence (moderate and severe, %) 10 (2006)

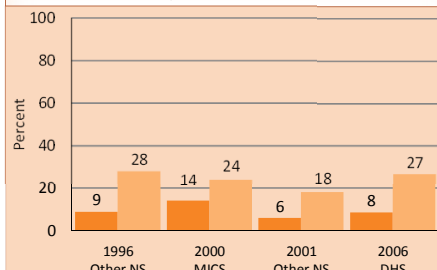
Early initiation of breastfeeding (within 1 hr of birth, %) 32 (2006)

Introduction of solid, semi-solid/soft foods (%) 83 (2006)

Vitamin A two dose coverage (%) 89 (2010)

#### Underweight and stunting prevalence

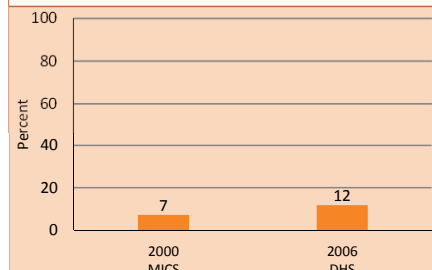
■ Percent children <5 years who are underweight  
■ Percent children <5 years who are stunted



Note: Based on 2006 WHO reference population

#### Exclusive breastfeeding

Percent infants <6 months exclusively breastfed





# Countdown to 2015

## Maternal, Newborn & Child Survival

# Bangladesh

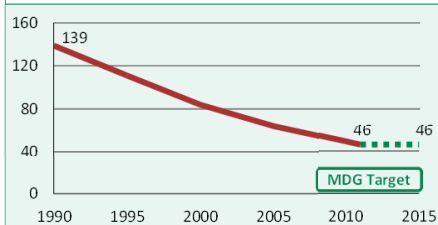
May 2013

## DEMOGRAPHICS

Total population (000)	150,494	(2011)
Total under-five population (000)	14,427	(2011)
Births (000)	3,016	(2011)
Birth registration (%)	10	(2006)
Total under-five deaths (000)	134	(2011)
Neonatal deaths: % of all under-5 deaths	60	(2011)
Neonatal mortality rate (per 1000 live births)	26	(2011)
Infant mortality rate (per 1000 live births)	37	(2011)
Stillbirth rate (per 1000 total births)	36	(2009)
Total maternal deaths	7,200	(2010)
Lifetime risk of maternal death (1 in N)	170	(2010)
Total fertility rate (per woman)	2.2	(2011)
Adolescent birth rate (per 1000 women)	133	(2004)

### Under-five mortality rate

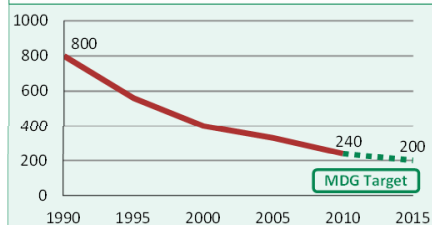
Deaths per 1000 live births



Source: IGME 2012

### Maternal mortality ratio

Deaths per 100,000 live births

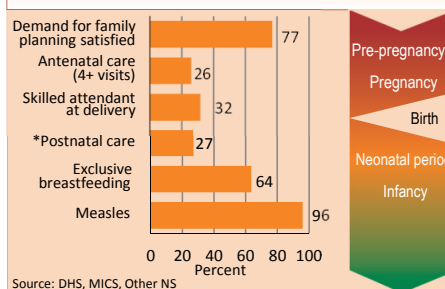


Source: MMEIG 2012

Note: MDG target calculated by Countdown to 2015.

## MATERNAL AND NEWBORN HEALTH

### Coverage along the continuum of care

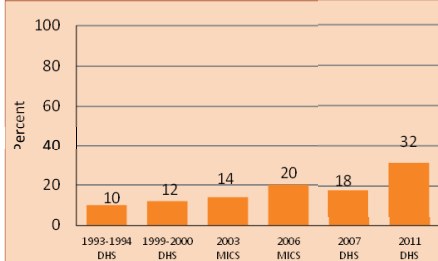


Source: DHS, MICS, Other NS

\* See Annex/website for indicator definition

### Skilled attendant at delivery

Percent live births attended by skilled health personnel

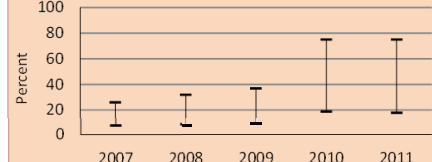


### Prevention of mother-to-child transmission of HIV

Eligible HIV+ pregnant women receiving ART for their own health (% of total ARVs)

Percent HIV+ pregnant women receiving ARVs for PMTCT

Uncertainty range around the estimate

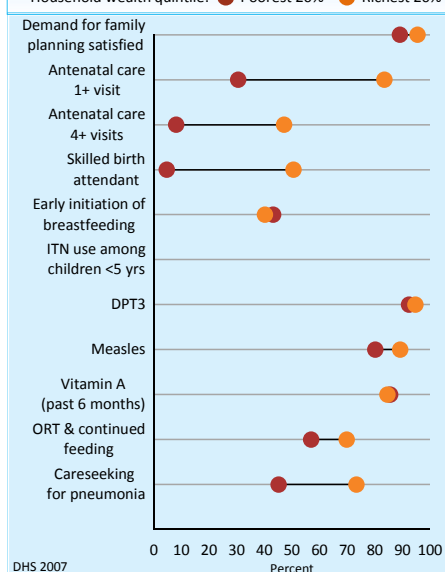


Source: UNICEF/UNAIDS/WHO

## EQUITY

### Socioeconomic inequities in coverage

Household wealth quintile: Poorest 20% Richest 20%



DHS 2007

Coverage levels are shown for the poorest 20% (red circles) and the richest 20% (orange circles). The longer the line between the two groups, the greater the inequality. These estimates may differ from other charts due to differences in data sources.

Developed by Countdown to report on core indicators identified by the UN Commission on Information and Accountability, in support of the Global Strategy for Women's and Children's Health

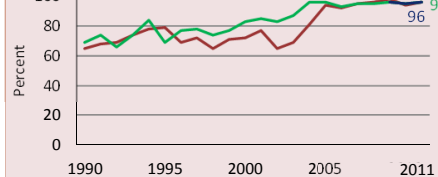
## CHILD HEALTH

### Immunization

Percent of children immunized against measles

Percent of children immunized with 3 doses DTP

Percent of children immunized with 3 doses Hib

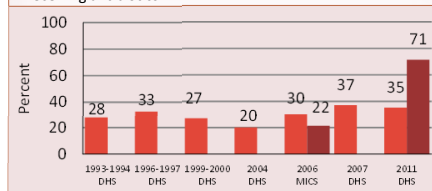


Source: WHO/UNICEF

### Pneumonia treatment

Percent children <5 years with suspected pneumonia taken to appropriate health provider

Percent children <5 years with suspected pneumonia receiving antibiotics



## NUTRITION

Wasting prevalence (moderate and severe, %)

Low birthweight incidence (moderate and severe, %)

Early initiation of breastfeeding (within 1 hr of birth, %)

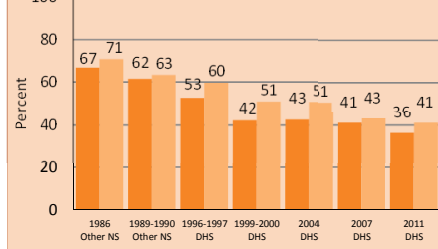
Introduction of solid, semi-solid/soft foods (%)

Vitamin A two dose coverage (%)

Underweight and stunting prevalence

Percent children <5 years who are underweight

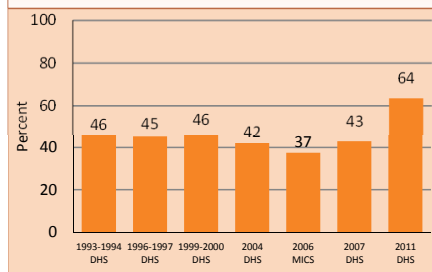
Percent children <5 years who are stunted



Note: Based on 2006 WHO reference population

### Exclusive breastfeeding

Percent infants <6 months exclusively breastfed





# Countdown to 2015

Maternal, Newborn & Child Survival

## Benin

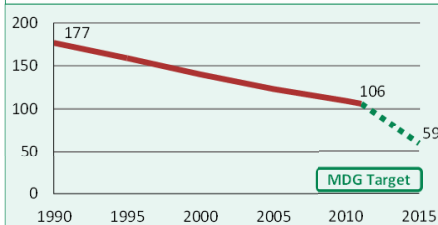
May 2013

### DEMOGRAPHICS

Total population (000)	9,100	(2011)
Total under-five population (000)	1,547	(2011)
Births (000)	356	(2011)
Birth registration (%)	60	(2011)
Total under-five deaths (000)	36	(2011)
Neonatal deaths: % of all under-5 deaths	30	(2011)
Neonatal mortality rate (per 1000 live births)	31	(2011)
Infant mortality rate (per 1000 live births)	68	(2011)
Stillbirth rate (per 1000 total births)	24	(2009)
Total maternal deaths	1,200	(2010)
Lifetime risk of maternal death (1 in N)	53	(2010)
Total fertility rate (per woman)	5.2	(2011)
Adolescent birth rate (per 1000 women)	114	(2004)

#### Under-five mortality rate

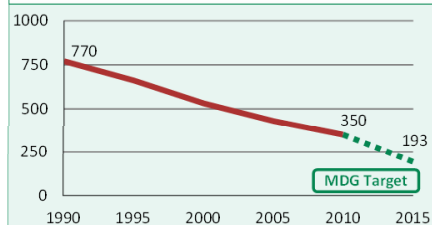
Deaths per 1000 live births



Source: IGME 2012

#### Maternal mortality ratio

Deaths per 100,000 live births

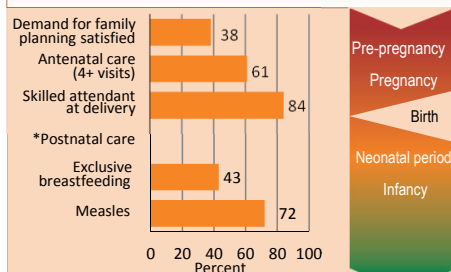


Source: MMEIG 2012

Note: MDG target calculated by Countdown to 2015.

### MATERNAL AND NEWBORN HEALTH

#### Coverage along the continuum of care

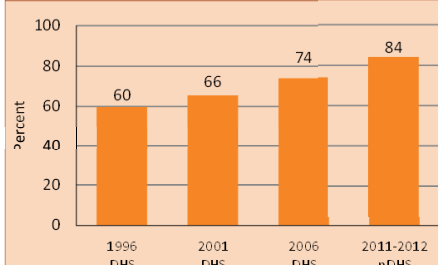


Source: DHS, MICS, Other NS

\* See Annex/website for indicator definition

#### Skilled attendant at delivery

Percent live births attended by skilled health personnel

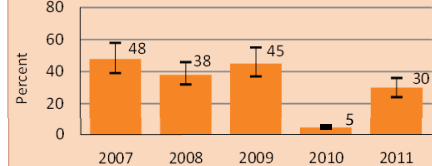


#### Prevention of mother-to-child transmission of HIV

Eligible HIV+ pregnant women receiving ART for their own health (% of total ARVs)

Percent HIV+ pregnant women receiving ARVs for PMTCT

Uncertainty range around the estimate

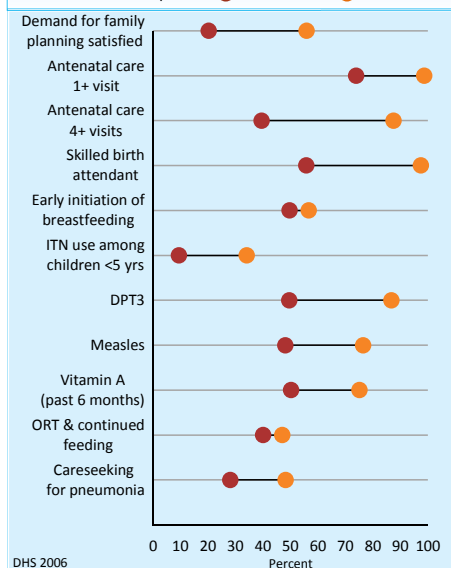


Source: UNICEF/UNAIDS/WHO

### EQUITY

#### Socioeconomic inequities in coverage

Household wealth quintile: Poorest 20% Richest 20%



DHS 2006

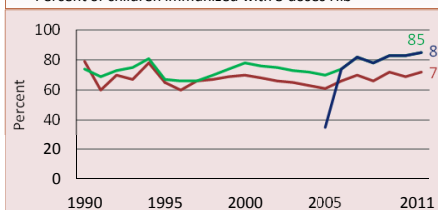
Coverage levels are shown for the poorest 20% (red circles) and the richest 20% (orange circles). The longer the line between the two groups, the greater the inequality. These estimates may differ from other charts due to differences in data sources.

Developed by Countdown to report on core indicators identified by the UN Commission on Information and Accountability, in support of the Global Strategy for Women's and Children's Health

### CHILD HEALTH

#### Immunization

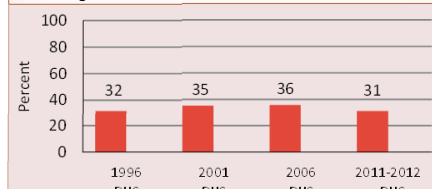
Percent of children immunized against measles  
Percent of children immunized with 3 doses DTP  
Percent of children immunized with 3 doses Hib



Source: WHO/UNICEF

#### Pneumonia treatment

Percent children <5 years with suspected pneumonia taken to appropriate health provider  
Percent children <5 years with suspected pneumonia receiving antibiotics



### NUTRITION

Wasting prevalence (moderate and severe, %)

8

(2006)

Low birthweight incidence (moderate and severe, %)

15

(2006)

Early initiation of breastfeeding (within 1 hr of birth, %)

32

(2008)

Introduction of solid, semi-solid/soft foods (%)

76

(2008)

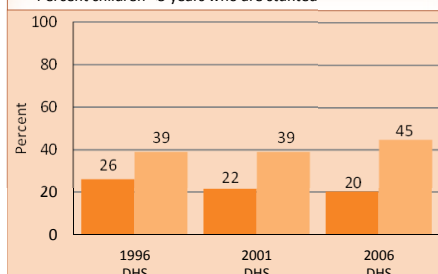
Vitamin A two dose coverage (%)

98

(2011)

#### Underweight and stunting prevalence

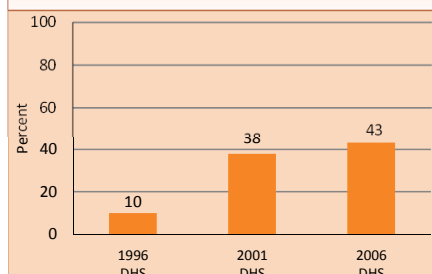
Percent children <5 years who are underweight  
Percent children <5 years who are stunted



Note: Based on 2006 WHO reference population

#### Exclusive breastfeeding

Percent infants <6 months exclusively breastfed







# Countdown to 2015

## Maternal, Newborn & Child Survival

# Bolivia

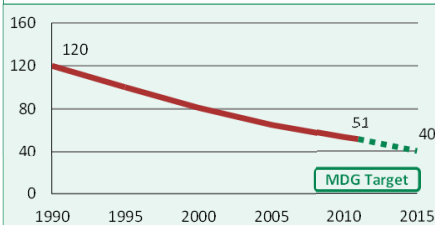
May 2013

## DEMOGRAPHICS

Total population (000)	10,088	(2011)
Total under-five population (000)	1,229	(2011)
Births (000)	264	(2011)
Birth registration (%)	76	(2008)
Total under-five deaths (000)	13	(2011)
Neonatal deaths: % of all under-5 deaths	45	(2011)
Neonatal mortality rate (per 1000 live births)	22	(2011)
Infant mortality rate (per 1000 live births)	39	(2011)
Stillbirth rate (per 1000 total births)	17	(2009)
Total maternal deaths	510	(2010)
Lifetime risk of maternal death (1 in N)	140	(2010)
Total fertility rate (per woman)	3.3	(2011)
Adolescent birth rate (per 1000 women)	89	(2005)

### Under-five mortality rate

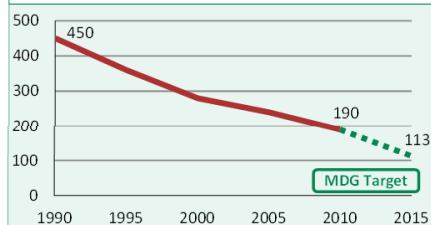
Deaths per 1000 live births



Source: IGME 2012

### Maternal mortality ratio

Deaths per 100,000 live births

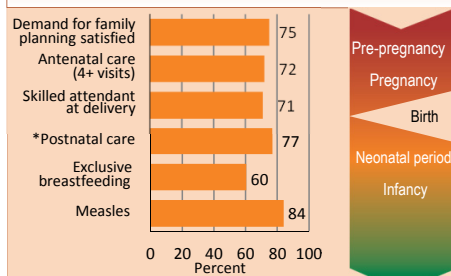


Source: MMEIG 2012

Note: MDG target calculated by Countdown to 2015.

## MATERNAL AND NEWBORN HEALTH

### Coverage along the continuum of care

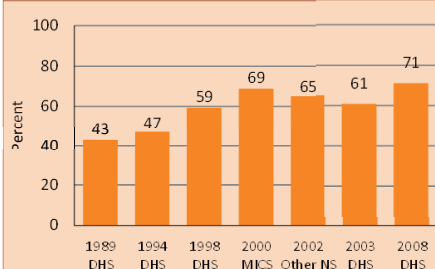


Source: DHS, MICS, Other NS

\* See Annex/website for indicator definition

### Skilled attendant at delivery

Percent live births attended by skilled health personnel

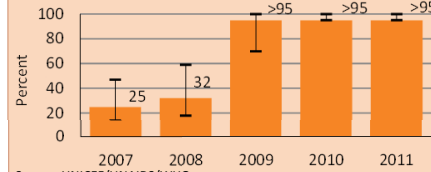


### Prevention of mother-to-child transmission of HIV

Eligible HIV+ pregnant women receiving ART for their own health (% of total ARVs)

Percent HIV+ pregnant women receiving ARVs for PMTCT

Uncertainty range around the estimate

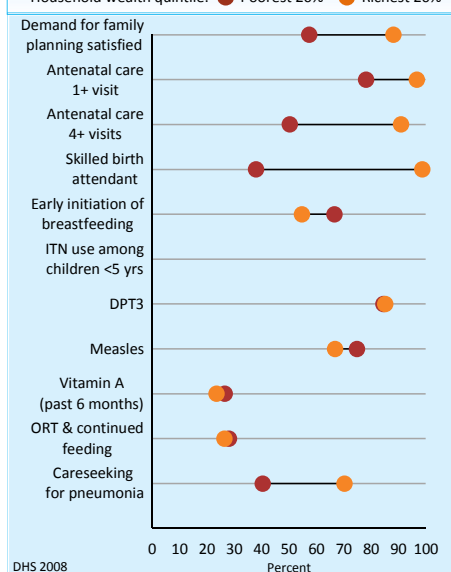


Source: UNICEF/UNAIDS/WHO

## EQUITY

### Socioeconomic inequities in coverage

Household wealth quintile: Poorest 20% Richest 20%



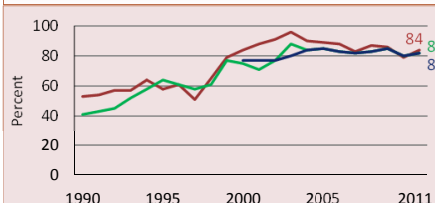
DHS 2008

Coverage levels are shown for the poorest 20% (red circles) and the richest 20% (orange circles). The longer the line between the two groups, the greater the inequality. These estimates may differ from other charts due to differences in data sources.

## CHILD HEALTH

### Immunization

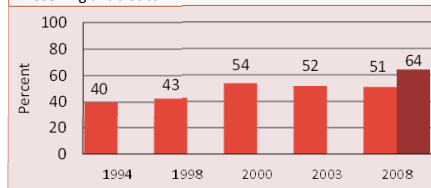
Percent of children immunized against measles  
Percent of children immunized with 3 doses DTP  
Percent of children immunized with 3 doses Hib



Source: WHO/UNICEF

### Pneumonia treatment

Percent children <5 years with suspected pneumonia taken to appropriate health provider  
Percent children <5 years with suspected pneumonia receiving antibiotics



## NUTRITION

Wasting prevalence (moderate and severe, %)

1

(2008)

Low birthweight incidence (moderate and severe, %)

6

(2008)

Early initiation of breastfeeding (within 1 hr of birth, %)

64

(2008)

Introduction of solid, semi-solid/soft foods (%)

83

(2008)

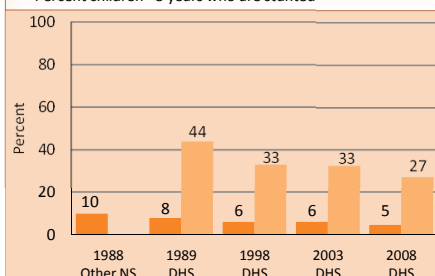
Vitamin A two dose coverage (%)

21

(2011)

### Underweight and stunting prevalence

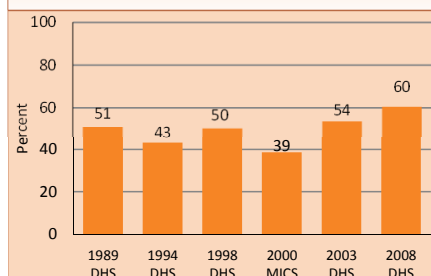
Percent children <5 years who are underweight  
Percent children <5 years who are stunted



Note: Based on 2006 WHO reference population

### Exclusive breastfeeding

Percent infants <6 months exclusively breastfed



Developed by Countdown to report on core indicators identified by the UN Commission on Information and Accountability, in support of the Global Strategy for Women's and Children's Health



# Countdown to 2015

Maternal, Newborn & Child Survival

## Botswana

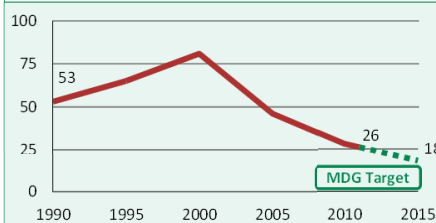
May 2013

### DEMOGRAPHICS

Total population (000)	2,031	(2011)
Total under-five population (000)	229	(2011)
Births (000)	47	(2011)
Birth registration (%)	72	(2007)
Total under-five deaths (000)	1	(2011)
Neonatal deaths: % of all under-5 deaths	43	(2011)
Neonatal mortality rate (per 1000 live births)	11	(2011)
Infant mortality rate (per 1000 live births)	20	(2011)
Stillbirth rate (per 1000 total births)	16	(2009)
Total maternal deaths	75	(2010)
Lifetime risk of maternal death (1 in N)	220	(2010)
Total fertility rate (per woman)	2.7	(2011)
Adolescent birth rate (per 1000 women)	51	(2006)

#### Under-five mortality rate

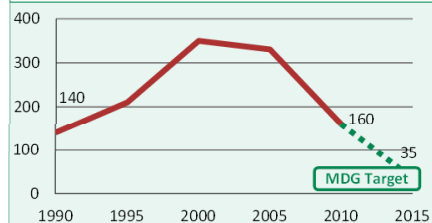
Deaths per 1000 live births



Source: IGME 2012

#### Maternal mortality ratio

Deaths per 100,000 live births

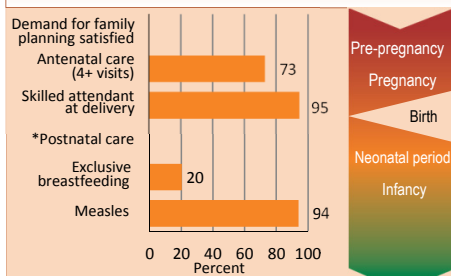


Source: MMEIG 2012

Note: MDG target calculated by Countdown to 2015.

### MATERNAL AND NEWBORN HEALTH

#### Coverage along the continuum of care

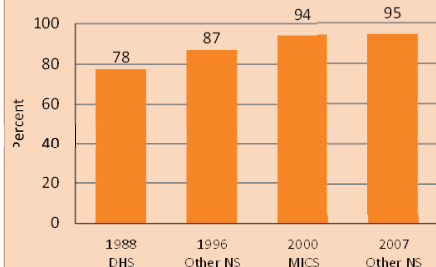


Source: DHS, MICS, Other NS

\* See Annex/website for indicator definition

#### Skilled attendant at delivery

Percent live births attended by skilled health personnel



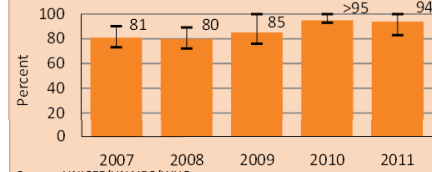
Source: DHS, MICS, Other NS

#### Prevention of mother-to-child transmission of HIV

Eligible HIV+ pregnant women receiving ART for their own health (% of total ARVs)

Percent HIV+ pregnant women receiving ARVs for PMTCT

Uncertainty range around the estimate

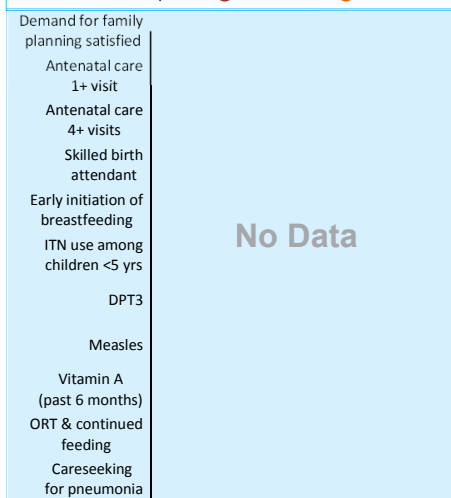


Source: UNICEF/UNAIDS/WHO

### EQUITY

#### Socioeconomic inequities in coverage

Household wealth quintile: Poorest 20% Richest 20%



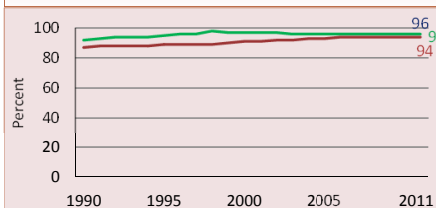
Coverage levels are shown for the poorest 20% (red circles) and the richest 20% (orange circles). The longer the line between the two groups, the greater the inequality. These estimates may differ from other charts due to differences in data sources.

Developed by Countdown to report on core indicators identified by the UN Commission on Information and Accountability, in support of the Global Strategy for Women's and Children's Health

### CHILD HEALTH

#### Immunization

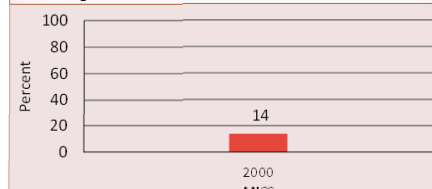
Percent of children immunized against measles  
Percent of children immunized with 3 doses DTP  
Percent of children immunized with 3 doses Hib



Source: WHO/UNICEF

#### Pneumonia treatment

Percent children <5 years with suspected pneumonia taken to appropriate health provider  
Percent children <5 years with suspected pneumonia receiving antibiotics



Source: MICS

### NUTRITION

Wasting prevalence (moderate and severe, %)

7

(2007)

Low birthweight incidence (moderate and severe, %)

13

(2007)

Early initiation of breastfeeding (within 1 hr of birth, %)

40

(2007)

Introduction of solid, semi-solid/soft foods (%)

46

(2007)

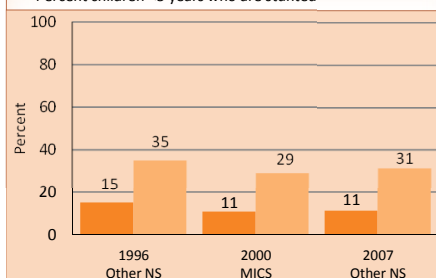
Vitamin A two dose coverage (%)

75

(2011)

#### Underweight and stunting prevalence

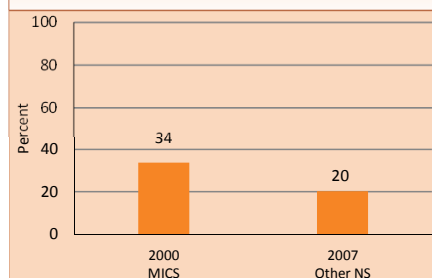
Percent children <5 years who are underweight  
Percent children <5 years who are stunted



Note: Based on 2006 WHO reference population

#### Exclusive breastfeeding

Percent infants <6 months exclusively breastfed







# Countdown to 2015

## Maternal, Newborn & Child Survival

# Brazil

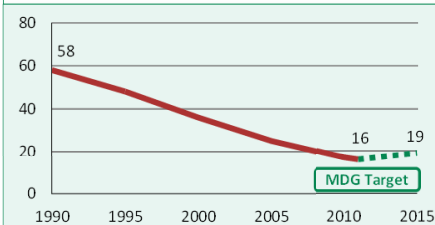
May 2013

## DEMOGRAPHICS

Total population (000)	196,655	(2011)
Total under-five population (000)	14,647	(2011)
Births (000)	2,996	(2011)
Birth registration (%)	91	(2008)
Total under-five deaths (000)	44	(2011)
Neonatal deaths: % of all under-5 deaths	66	(2011)
Neonatal mortality rate (per 1000 live births)	10	(2011)
Infant mortality rate (per 1000 live births)	14	(2011)
Stillbirth rate (per 1000 total births)	10	(2009)
Total maternal deaths	1,700	(2010)
Lifetime risk of maternal death (1 in N)	910	(2010)
Total fertility rate (per woman)	1.8	(2011)
Adolescent birth rate (per 1000 women)	71	(2008)

### Under-five mortality rate

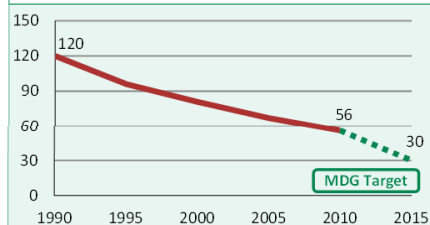
Deaths per 1000 live births



Source: IGME 2012

### Maternal mortality ratio

Deaths per 100,000 live births

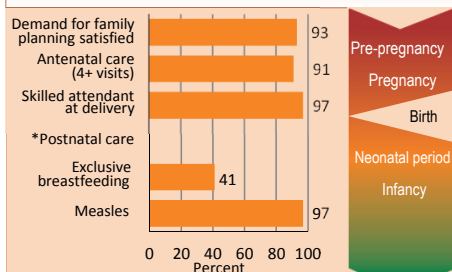


Source: MMEIG 2012

Note: MDG target calculated by Countdown to 2015.

## MATERNAL AND NEWBORN HEALTH

### Coverage along the continuum of care

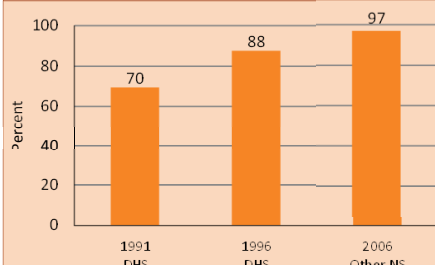


Source: DHS, MICS, Other NS

\* See Annex/website for indicator definition

### Skilled attendant at delivery

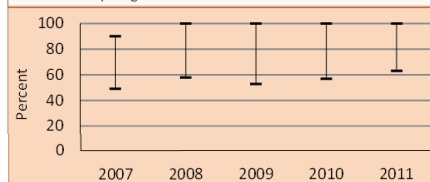
Percent live births attended by skilled health personnel



### Prevention of mother-to-child transmission of HIV

Eligible HIV+ pregnant women receiving ART for their own health (% of total ARVs)

■ Percent HIV+ pregnant women receiving ARVs for PMTCT  
■ Uncertainty range around the estimate

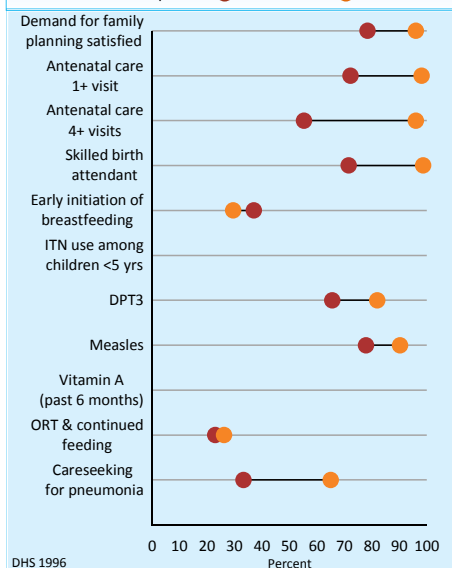


Source: UNICEF/UNAIDS/WHO

## EQUITY

### Socioeconomic inequities in coverage

Household wealth quintile: ● Poorest 20% ● Richest 20%



DHS 1996

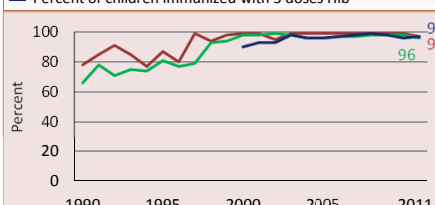
Coverage levels are shown for the poorest 20% (red circles) and the richest 20% (orange circles). The longer the line between the two groups, the greater the inequality. These estimates may differ from other charts due to differences in data sources.

Developed by Countdown to report on core indicators identified by the UN Commission on Information and Accountability, in support of the Global Strategy for Women's and Children's Health

## CHILD HEALTH

### Immunization

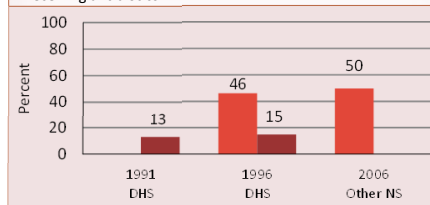
■ Percent of children immunized against measles  
■ Percent of children immunized with 3 doses DTP  
■ Percent of children immunized with 3 doses Hib



Source: WHO/UNICEF

### Pneumonia treatment

■ Percent children <5 years with suspected pneumonia taken to appropriate health provider  
■ Percent children <5 years with suspected pneumonia receiving antibiotics



## NUTRITION

Wasting prevalence (moderate and severe, %) 2 (2006)

Low birthweight incidence (moderate and severe, %) 8 (2010)

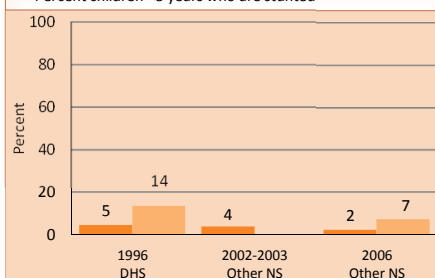
Early initiation of breastfeeding (within 1 hr of birth, %) 43 (2006)

Introduction of solid, semi-solid/soft foods (%) 70 (2008)

Vitamin A two dose coverage (%) -

### Underweight and stunting prevalence

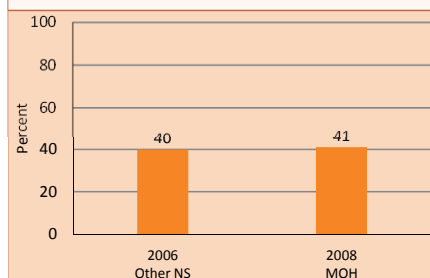
■ Percent children <5 years who are underweight  
■ Percent children <5 years who are stunted



Note: Based on 2006 WHO reference population

### Exclusive breastfeeding

Percent infants <6 months exclusively breastfed





# Countdown to 2015

Maternal, Newborn & Child Survival

## Burkina Faso

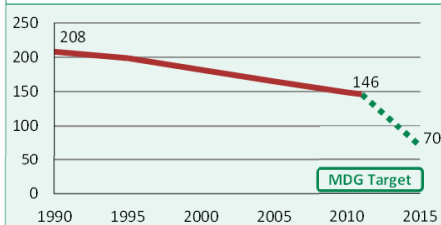
May 2013

### DEMOGRAPHICS

Total population (000)	16,968	(2011)
Total under-five population (000)	3,051	(2011)
Births (000)	730	(2011)
Birth registration (%)	77	(2010)
Total under-five deaths (000)	101	(2011)
Neonatal deaths: % of all under-5 deaths	25	(2011)
Neonatal mortality rate (per 1000 live births)	34	(2011)
Infant mortality rate (per 1000 live births)	82	(2011)
Stillbirth rate (per 1000 total births)	26	(2009)
Total maternal deaths	2,100	(2010)
Lifetime risk of maternal death (1 in N)	55	(2010)
Total fertility rate (per woman)	5.8	(2011)
Adolescent birth rate (per 1000 women)	130	(2009)

#### Under-five mortality rate

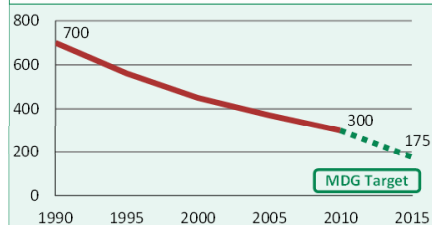
Deaths per 1000 live births



Source: IGME 2012

#### Maternal mortality ratio

Deaths per 100,000 live births

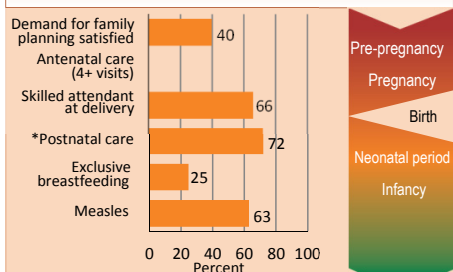


Source: MMEIG 2012

Note: MDG target calculated by Countdown to 2015.

### MATERNAL AND NEWBORN HEALTH

#### Coverage along the continuum of care

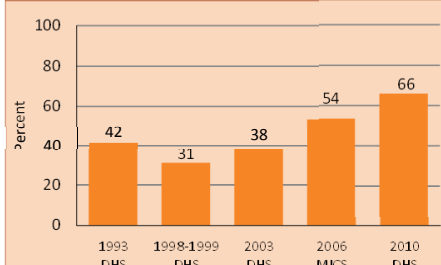


Source: DHS, MICS, Other NS

\* See Annex/website for indicator definition

#### Skilled attendant at delivery

Percent live births attended by skilled health personnel

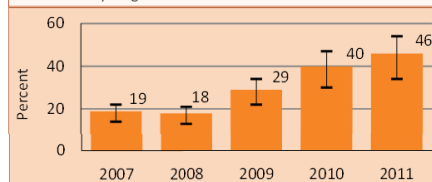


#### Prevention of mother-to-child transmission of HIV

Eligible HIV+ pregnant women receiving ART for their own health (% of total ARVs)

Percent HIV+ pregnant women receiving ARVs for PMTCT

Uncertainty range around the estimate

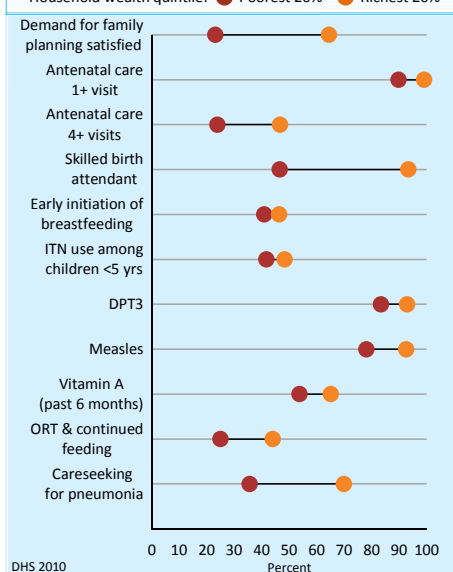


Source: UNICEF/UNAIDS/WHO

### EQUITY

#### Socioeconomic inequities in coverage

Household wealth quintile: Poorest 20% Richest 20%



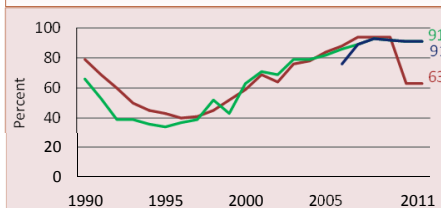
DHS 2010

Coverage levels are shown for the poorest 20% (red circles) and the richest 20% (orange circles). The longer the line between the two groups, the greater the inequality. These estimates may differ from other charts due to differences in data sources.

### CHILD HEALTH

#### Immunization

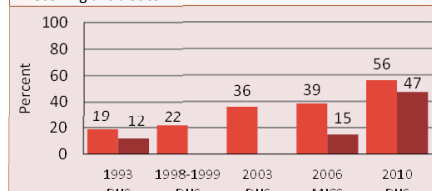
Percent of children immunized against measles  
Percent of children immunized with 3 doses DTP  
Percent of children immunized with 3 doses Hib



Source: WHO/UNICEF

#### Pneumonia treatment

Percent children <5 years with suspected pneumonia taken to appropriate health provider  
Percent children <5 years with suspected pneumonia receiving antibiotics



### NUTRITION

Wasting prevalence (moderate and severe, %)

11

(2009)

Low birthweight incidence (moderate and severe, %)

16

(2006)

Early initiation of breastfeeding (within 1 hr of birth, %)

20

(2006)

Introduction of solid, semi-solid/soft foods (%)

61

(2010-2011)

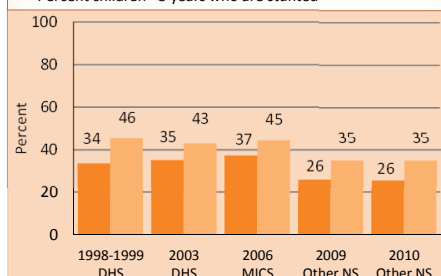
Vitamin A two dose coverage (%)

87

(2011)

#### Underweight and stunting prevalence

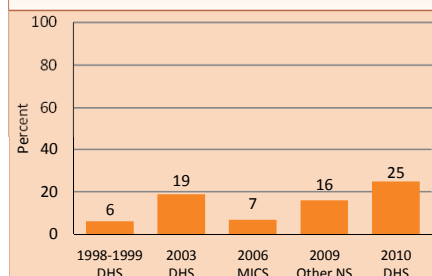
Percent children <5 years who are underweight  
Percent children <5 years who are stunted



Note: Based on 2006 WHO reference population

#### Exclusive breastfeeding

Percent infants <6 months exclusively breastfed



Developed by Countdown to report on core indicators identified by the UN Commission on Information and Accountability, in support of the Global Strategy for Women's and Children's Health



# Countdown to 2015

## Maternal, Newborn & Child Survival

# Burundi

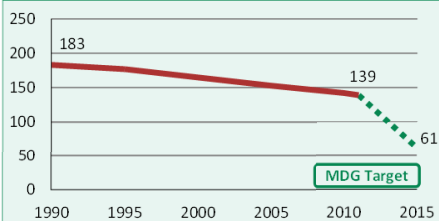
May 2013

## DEMOGRAPHICS

Total population (000)	8,575	(2011)
Total under-five population (000)	1,218	(2011)
Births (000)	288	(2011)
Birth registration (%)	75	(2010)
Total under-five deaths (000)	39	(2011)
Neonatal deaths: % of all under-5 deaths	32	(2011)
Neonatal mortality rate (per 1000 live births)	43	(2011)
Infant mortality rate (per 1000 live births)	86	(2011)
Stillbirth rate (per 1000 total births)	28	(2009)
Total maternal deaths	2,200	(2010)
Lifetime risk of maternal death (1 in N)	31	(2010)
Total fertility rate (per woman)	4.2	(2011)
Adolescent birth rate (per 1000 women)	65	(2009)

### Under-five mortality rate

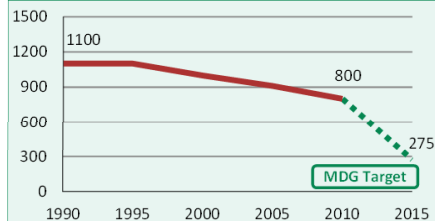
Deaths per 1000 live births



Source: IGME 2012

### Maternal mortality ratio

Deaths per 100,000 live births

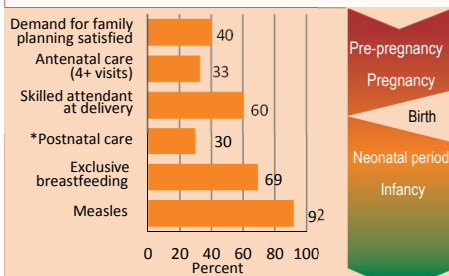


Source: MMEIG 2012

Note: MDG target calculated by Countdown to 2015.

## MATERNAL AND NEWBORN HEALTH

### Coverage along the continuum of care

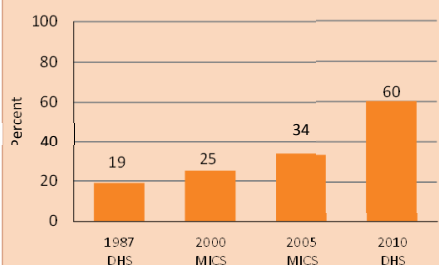


Source: DHS, MICS, Other NS

\* See Annex/website for indicator definition

### Skilled attendant at delivery

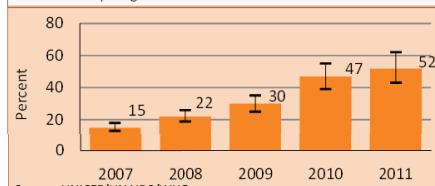
Percent live births attended by skilled health personnel



### Prevention of mother-to-child transmission of HIV

Eligible HIV+ pregnant women receiving ART for their own health (% of total ARVs)

■ Percent HIV+ pregnant women receiving ARVs for PMTCT  
■ Uncertainty range around the estimate

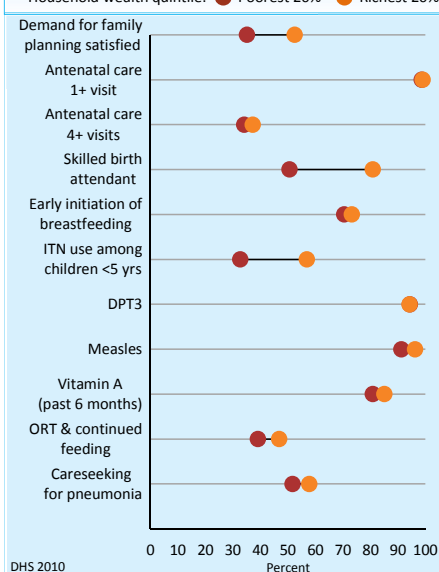


Source: UNICEF/UNAIDS/WHO

## EQUITY

### Socioeconomic inequities in coverage

Household wealth quintile: ● Poorest 20% ● Richest 20%

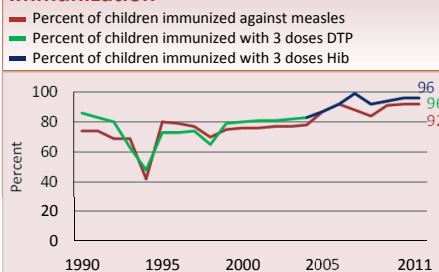


DHS 2010

Coverage levels are shown for the poorest 20% (red circles) and the richest 20% (orange circles). The longer the line between the two groups, the greater the inequality. These estimates may differ from other charts due to differences in data sources.

## CHILD HEALTH

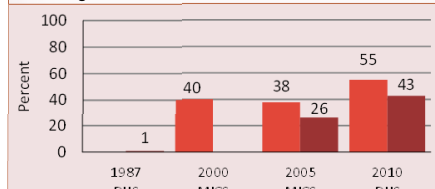
### Immunization



Source: WHO/UNICEF

### Pneumonia treatment

■ Percent children <5 years with suspected pneumonia taken to appropriate health provider  
■ Percent children <5 years with suspected pneumonia receiving antibiotics



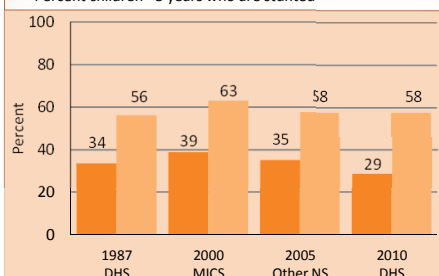
## NUTRITION

Wasting prevalence (moderate and severe, %)	6	(2010)
Low birthweight incidence (moderate and severe, %)	11	(2005)

Early initiation of breastfeeding (within 1 hr of birth, %)	-	-
Introduction of solid, semi-solid/soft foods (%)	70	(2010)
Vitamin A two dose coverage (%)	83	(2011)

### Underweight and stunting prevalence

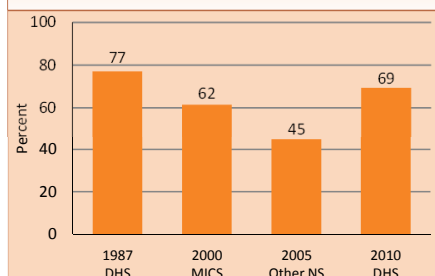
■ Percent children <5 years who are underweight  
■ Percent children <5 years who are stunted



Note: Based on 2006 WHO reference population

### Exclusive breastfeeding

Percent infants <6 months exclusively breastfed



Developed by Countdown to report on core indicators identified by the UN Commission on Information and Accountability, in support of the Global Strategy for Women's and Children's Health



# Countdown to 2015

Maternal, Newborn & Child Survival

## Cambodia

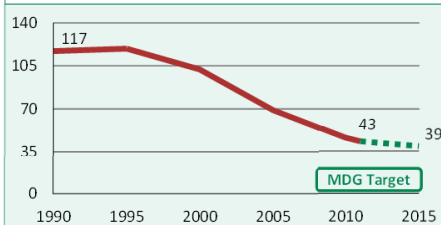
May 2013

### DEMOGRAPHICS

Total population (000)	14,305	(2011)
Total under-five population (000)	1,507	(2011)
Births (000)	317	(2011)
Birth registration (%)	62	(2010)
Total under-five deaths (000)	13	(2011)
Neonatal deaths: % of all under-5 deaths	46	(2011)
Neonatal mortality rate (per 1000 live births)	19	(2011)
Infant mortality rate (per 1000 live births)	36	(2011)
Stillbirth rate (per 1000 total births)	18	(2009)
Total maternal deaths	790	(2010)
Lifetime risk of maternal death (1 in N)	150	(2010)
Total fertility rate (per woman)	2.5	(2011)
Adolescent birth rate (per 1000 women)	48	(2008)

#### Under-five mortality rate

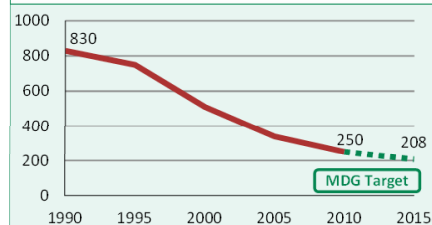
Deaths per 1000 live births



Source: IGME 2012

#### Maternal mortality ratio

Deaths per 100,000 live births

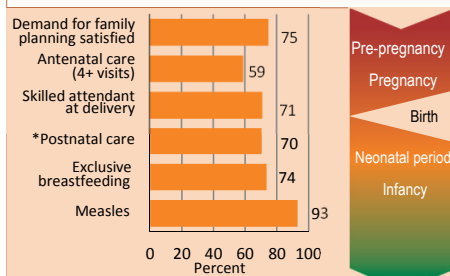


Source: MMEIG 2012

Note: MDG target calculated by Countdown to 2015.

### MATERNAL AND NEWBORN HEALTH

#### Coverage along the continuum of care

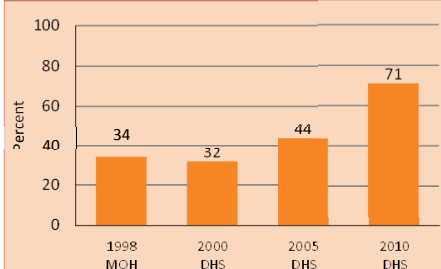


Source: DHS, MICS, Other NS

\* See Annex/website for indicator definition

#### Skilled attendant at delivery

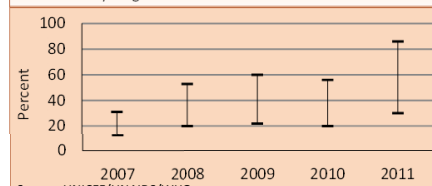
Percent live births attended by skilled health personnel



#### Prevention of mother-to-child transmission of HIV

Eligible HIV+ pregnant women receiving ART for their own health (% of total ARVs)

■ Percent HIV+ pregnant women receiving ARVs for PMTCT  
■ Uncertainty range around the estimate

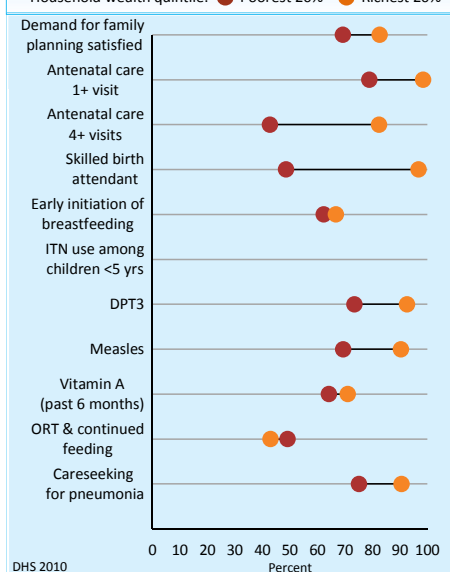


Source: UNICEF/UNAIDS/WHO

### EQUITY

#### Socioeconomic inequities in coverage

Household wealth quintile: ● Poorest 20% ● Richest 20%

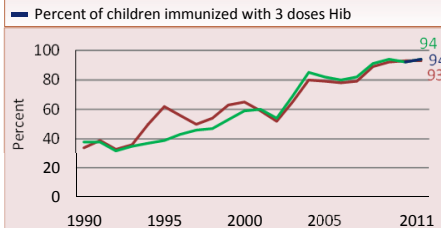


Coverage levels are shown for the poorest 20% (red circles) and the richest 20% (orange circles). The longer the line between the two groups, the greater the inequality. These estimates may differ from other charts due to differences in data sources.

### CHILD HEALTH

#### Immunization

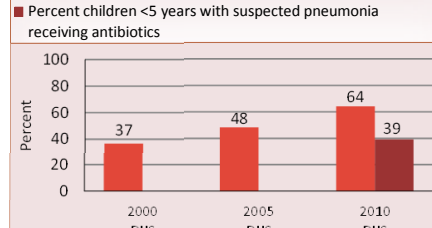
■ Percent of children immunized against measles  
■ Percent of children immunized with 3 doses DTP  
■ Percent of children immunized with 3 doses Hib



Source: WHO/UNICEF

#### Pneumonia treatment

■ Percent children <5 years with suspected pneumonia taken to appropriate health provider  
■ Percent children <5 years with suspected pneumonia receiving antibiotics



### NUTRITION

Wasting prevalence (moderate and severe, %) 11 (2010)

Low birthweight incidence (moderate and severe, %) 11 (2010)

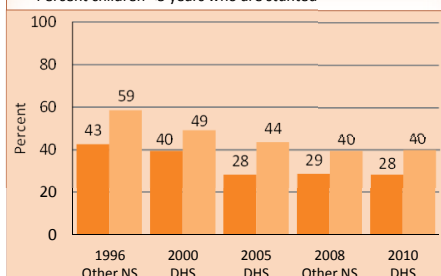
Early initiation of breastfeeding (within 1 hr of birth, %) 65 (2010)

Introduction of solid, semi-solid/soft foods (%) 82 (2010)

Vitamin A two dose coverage (%) 92 (2011)

#### Underweight and stunting prevalence

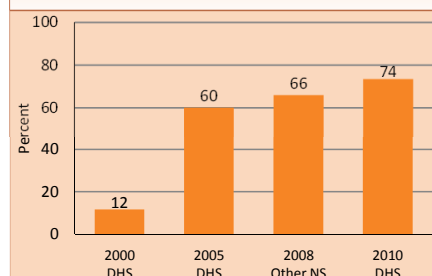
■ Percent children <5 years who are underweight  
■ Percent children <5 years who are stunted



Note: Based on 2006 WHO reference population

#### Exclusive breastfeeding

Percent infants <6 months exclusively breastfed



Developed by Countdown to report on core indicators identified by the UN Commission on Information and Accountability, in support of the Global Strategy for Women's and Children's Health



# Countdown to 2015

## Maternal, Newborn & Child Survival

# Cameroon

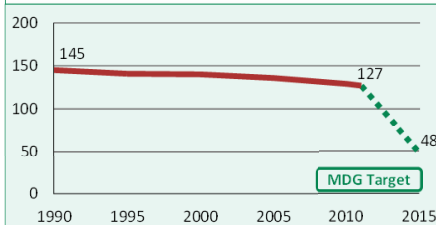
May 2013

## DEMOGRAPHICS

Total population (000)	20,030	(2011)
Total under-five population (000)	3,104	(2011)
Births (000)	716	(2011)
Birth registration (%)	70	(2006)
Total under-five deaths (000)	88	(2011)
Neonatal deaths: % of all under-5 deaths	27	(2011)
Neonatal mortality rate (per 1000 live births)	33	(2011)
Infant mortality rate (per 1000 live births)	79	(2011)
Stillbirth rate (per 1000 total births)	26	(2009)
Total maternal deaths	4,900	(2010)
Lifetime risk of maternal death (1 in N)	31	(2010)
Total fertility rate (per woman)	4.4	(2011)
Adolescent birth rate (per 1000 women)	127	(2010)

### Under-five mortality rate

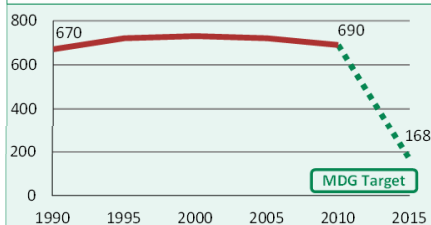
Deaths per 1000 live births



Source: IGME 2012

### Maternal mortality ratio

Deaths per 100,000 live births

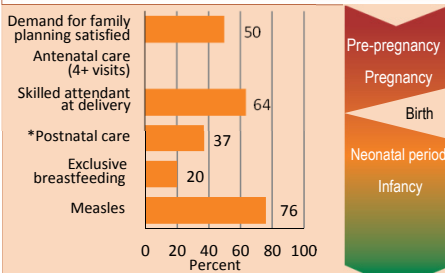


Source: MMEIG 2012

Note: MDG target calculated by Countdown to 2015.

## MATERNAL AND NEWBORN HEALTH

### Coverage along the continuum of care

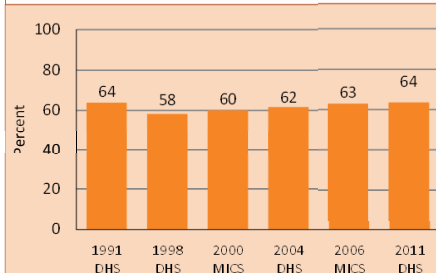


Source: DHS, MICS, Other NS

\* See Annex/website for indicator definition

### Skilled attendant at delivery

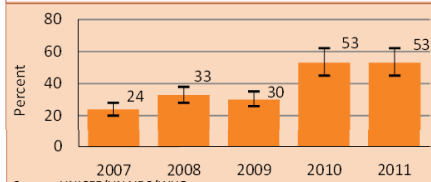
Percent live births attended by skilled health personnel



### Prevention of mother-to-child transmission of HIV

Eligible HIV+ pregnant women receiving ART for their own health (% of total ARVs)

■ Percent HIV+ pregnant women receiving ARVs for PMTCT  
■ Uncertainty range around the estimate

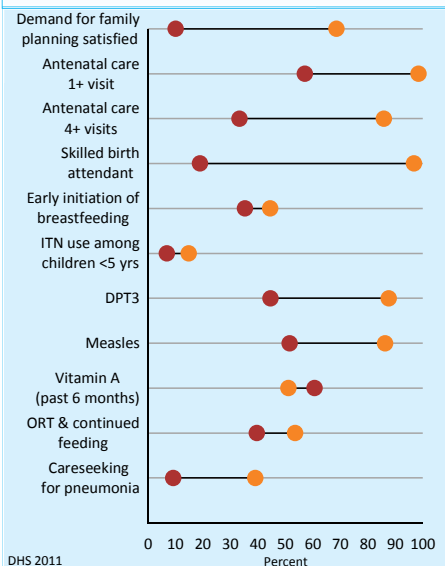


Source: UNICEF/UNAIDS/WHO

## EQUITY

### Socioeconomic inequities in coverage

Household wealth quintile: ● Poorest 20% ● Richest 20%



DHS 2011

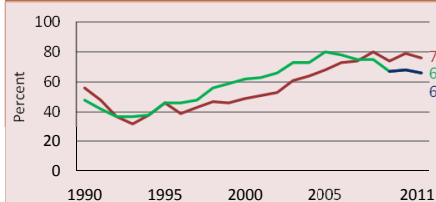
Coverage levels are shown for the poorest 20% (red circles) and the richest 20% (orange circles). The longer the line between the two groups, the greater the inequality. These estimates may differ from other charts due to differences in data sources.

Developed by Countdown to report on core indicators identified by the UN Commission on Information and Accountability, in support of the Global Strategy for Women's and Children's Health

## CHILD HEALTH

### Immunization

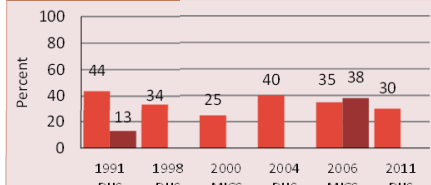
■ Percent of children immunized against measles  
■ Percent of children immunized with 3 doses DTP  
■ Percent of children immunized with 3 doses Hib



Source: WHO/UNICEF

### Pneumonia treatment

■ Percent children <5 years with suspected pneumonia taken to appropriate health provider  
■ Percent children <5 years with suspected pneumonia receiving antibiotics

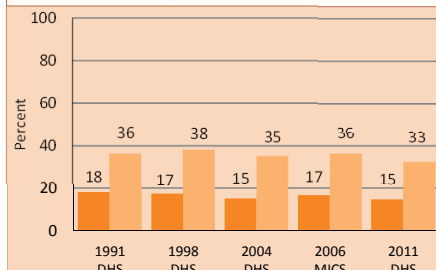


## NUTRITION

Wasting prevalence (moderate and severe, %)	6	(2011)
Low birthweight incidence (moderate and severe, %)	11	(2006)

### Underweight and stunting prevalence

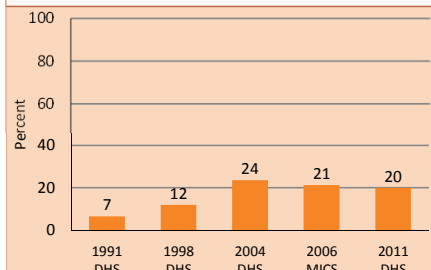
■ Percent children <5 years who are underweight  
■ Percent children <5 years who are stunted



Note: Based on 2006 WHO reference population

### Exclusive breastfeeding

Percent infants <6 months exclusively breastfed





# Countdown to 2015

Maternal, Newborn & Child Survival

## Central African Republic

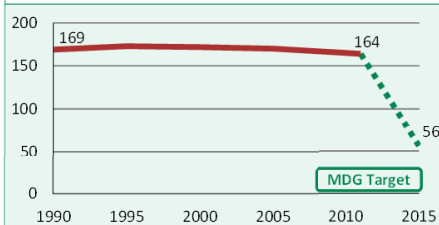
May 2013

### DEMOGRAPHICS

Total population (000)	4,487	(2011)
Total under-five population (000)	659	(2011)
Births (000)	156	(2011)
Birth registration (%)	61	(2010)
Total under-five deaths (000)	25	(2011)
Neonatal deaths: % of all under-5 deaths	29	(2011)
Neonatal mortality rate (per 1000 live births)	46	(2011)
Infant mortality rate (per 1000 live births)	108	(2011)
Stillbirth rate (per 1000 total births)	24	(2009)
Total maternal deaths	1,400	(2010)
Lifetime risk of maternal death (1 in N)	26	(2010)
Total fertility rate (per woman)	4.5	(2011)
Adolescent birth rate (per 1000 women)	133	(2003)

#### Under-five mortality rate

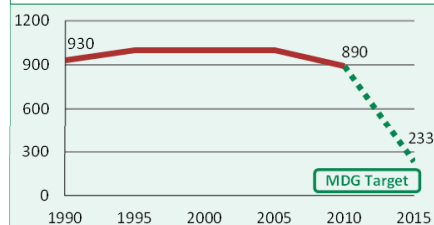
Deaths per 1000 live births



Source: IGME 2012

#### Maternal mortality ratio

Deaths per 100,000 live births

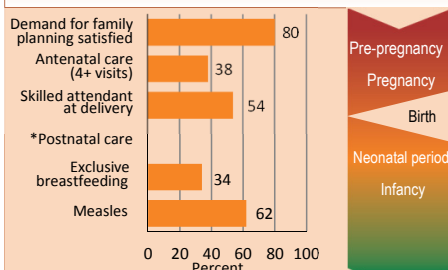


Source: MMEIG 2012

Note: MDG target calculated by Countdown to 2015.

### MATERNAL AND NEWBORN HEALTH

#### Coverage along the continuum of care

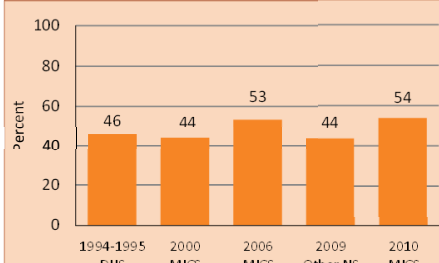


Source: DHS, MICS, Other NS

\* See Annex/website for indicator definition

#### Skilled attendant at delivery

Percent live births attended by skilled health personnel

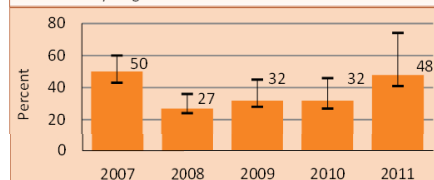


Source: DHS, MICS, Other NS

#### Prevention of mother-to-child transmission of HIV

Eligible HIV+ pregnant women receiving ART for their own health (% of total ARVs)

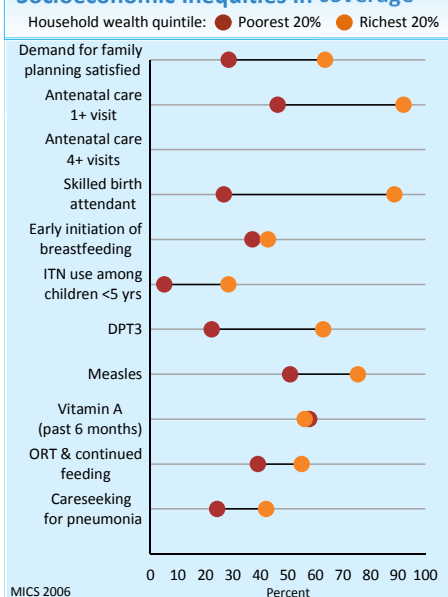
■ Percent HIV+ pregnant women receiving ARVs for PMTCT  
■ Uncertainty range around the estimate



Source: UNICEF/UNAIDS/WHO

### EQUITY

#### Socioeconomic inequities in coverage



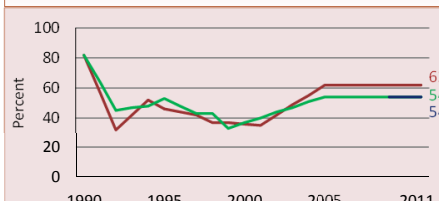
Coverage levels are shown for the poorest 20% (red circles) and the richest 20% (orange circles). The longer the line between the two groups, the greater the inequality. These estimates may differ from other charts due to differences in data sources.

Developed by Countdown to report on core indicators identified by the UN Commission on Information and Accountability, in support of the Global Strategy for Women's and Children's Health

### CHILD HEALTH

#### Immunization

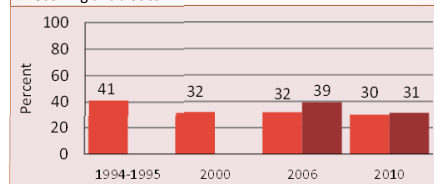
■ Percent of children immunized against measles  
■ Percent of children immunized with 3 doses DTP  
■ Percent of children immunized with 3 doses Hib



Source: WHO/UNICEF

#### Pneumonia treatment

■ Percent children <5 years with suspected pneumonia taken to appropriate health provider  
■ Percent children <5 years with suspected pneumonia receiving antibiotics



Source: DHS, MICS

### NUTRITION

Wasting prevalence (moderate and severe, %) 7 (2010)

Low birthweight incidence (moderate and severe, %) 14 (2010)

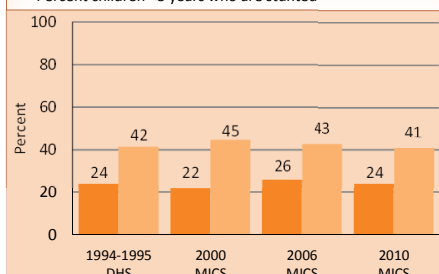
Early initiation of breastfeeding (within 1 hr of birth, %) 43 (2010)

Introduction of solid, semi-solid/soft foods (%) 56 (2010)

Vitamin A two dose coverage (%) 0 (2011)

#### Underweight and stunting prevalence

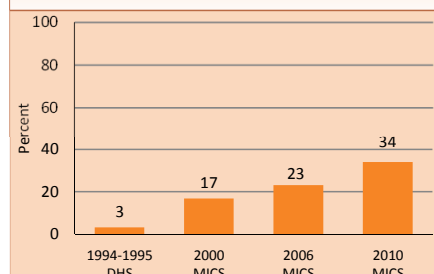
■ Percent children <5 years who are underweight  
■ Percent children <5 years who are stunted



Note: Based on 2006 WHO reference population

#### Exclusive breastfeeding

Percent infants <6 months exclusively breastfed







# Countdown to 2015

## Maternal, Newborn & Child Survival

# Chad

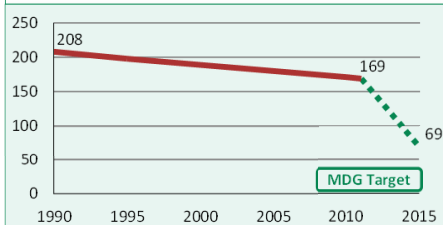
May 2013

## DEMOGRAPHICS

Total population (000)	11,525	(2011)
Total under-five population (000)	2,049	(2011)
Births (000)	511	(2011)
Birth registration (%)	16	(2010)
Total under-five deaths (000)	79	(2011)
Neonatal deaths: % of all under-5 deaths	27	(2011)
Neonatal mortality rate (per 1000 live births)	42	(2011)
Infant mortality rate (per 1000 live births)	97	(2011)
Stillbirth rate (per 1000 total births)	29	(2009)
Total maternal deaths	5,300	(2010)
Lifetime risk of maternal death (1 in N)	15	(2010)
Total fertility rate (per woman)	5.9	(2011)
Adolescent birth rate (per 1000 women)	193	(2002)

### Under-five mortality rate

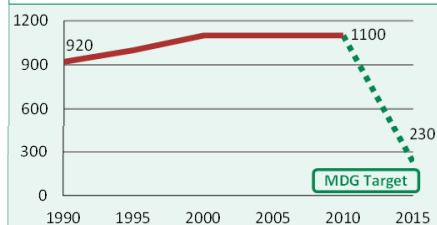
Deaths per 1000 live births



Source: IGME 2012

### Maternal mortality ratio

Deaths per 100,000 live births

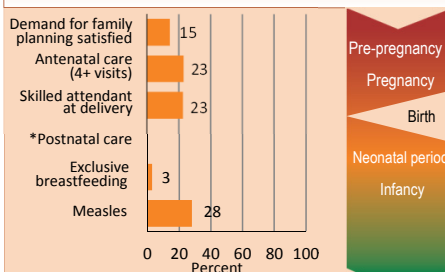


Source: MMEIG 2012

Note: MDG target calculated by Countdown to 2015.

## MATERNAL AND NEWBORN HEALTH

### Coverage along the continuum of care

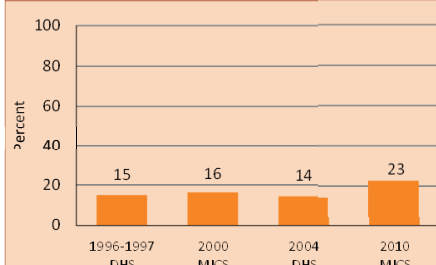


Source: DHS, MICS, Other NS

\* See Annex/website for indicator definition

### Skilled attendant at delivery

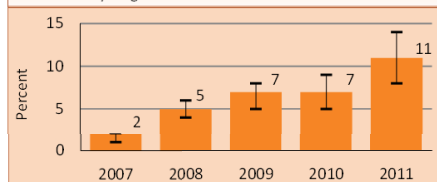
Percent live births attended by skilled health personnel



### Prevention of mother-to-child transmission of HIV

Eligible HIV+ pregnant women receiving ART for their own health (% of total ARVs)

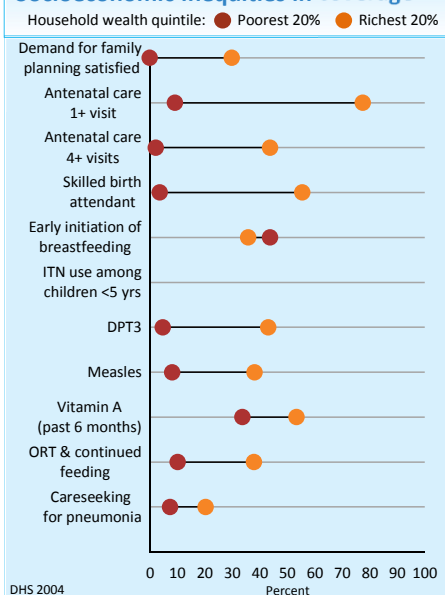
■ Percent HIV+ pregnant women receiving ARVs for PMTCT  
■ Uncertainty range around the estimate



Source: UNICEF/UNAIDS/WHO

## EQUITY

### Socioeconomic inequities in coverage



DHS 2004

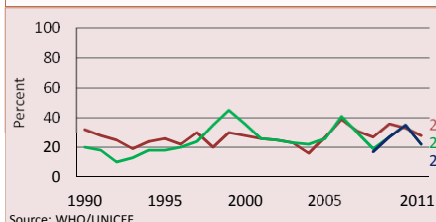
Coverage levels are shown for the poorest 20% (red circles) and the richest 20% (orange circles). The longer the line between the two groups, the greater the inequality. These estimates may differ from other charts due to differences in data sources.

Developed by Countdown to report on core indicators identified by the UN Commission on Information and Accountability, in support of the Global Strategy for Women's and Children's Health

## CHILD HEALTH

### Immunization

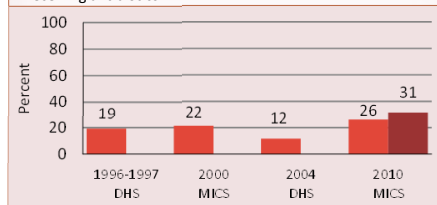
■ Percent of children immunized against measles  
■ Percent of children immunized with 3 doses DTP  
■ Percent of children immunized with 3 doses Hib



Source: WHO/UNICEF

### Pneumonia treatment

■ Percent children <5 years with suspected pneumonia taken to appropriate health provider  
■ Percent children <5 years with suspected pneumonia receiving antibiotics

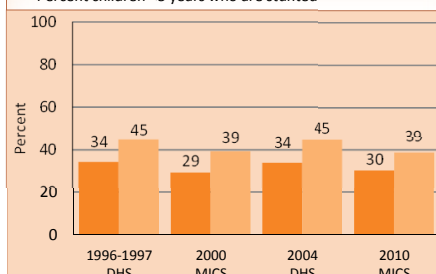


## NUTRITION

Wasting prevalence (moderate and severe, %) 16 (2010)  
Low birthweight incidence (moderate and severe, %) 20 (2010)

### Underweight and stunting prevalence

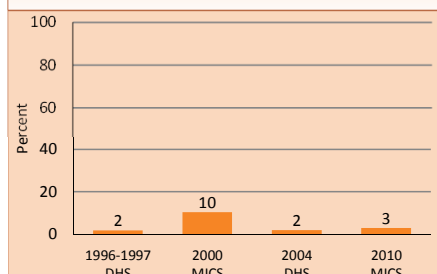
■ Percent children <5 years who are underweight  
■ Percent children <5 years who are stunted



Note: Based on 2006 WHO reference population

### Exclusive breastfeeding

Percent infants <6 months exclusively breastfed





# Countdown to 2015

Maternal, Newborn & Child Survival

## China

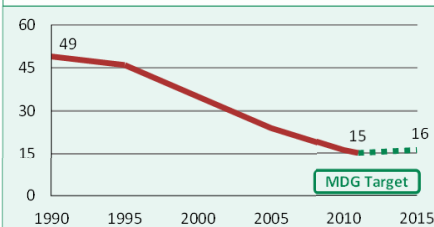
May 2013

### DEMOGRAPHICS

Total population (000)	1,347,565	(2011)
Total under-five population (000)	82,231	(2011)
Births (000)	16,364	(2011)
Birth registration (%)	-	-
Total under-five deaths (000)	249	(2011)
Neonatal deaths: % of all under-5 deaths	58	(2011)
Neonatal mortality rate (per 1000 live births)	9	(2011)
Infant mortality rate (per 1000 live births)	13	(2011)
Stillbirth rate (per 1000 total births)	10	(2009)
Total maternal deaths	6,000	(2010)
Lifetime risk of maternal death (1 in N)	1,700	(2010)
Total fertility rate (per woman)	1.6	(2011)
Adolescent birth rate (per 1000 women)	6	(2009)

#### Under-five mortality rate

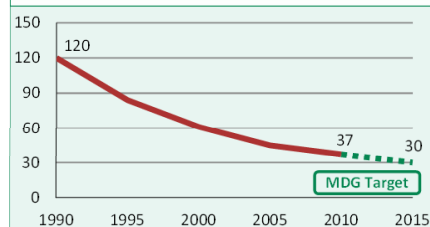
Deaths per 1000 live births



Source: IGME 2012

#### Maternal mortality ratio

Deaths per 100,000 live births

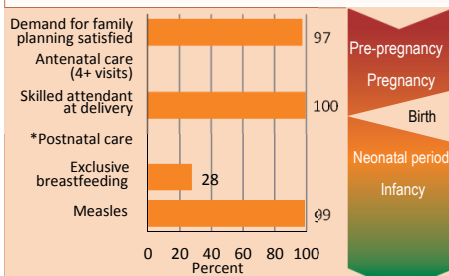


Source: MMEIG 2012

Note: MDG target calculated by Countdown to 2015.

### MATERNAL AND NEWBORN HEALTH

#### Coverage along the continuum of care

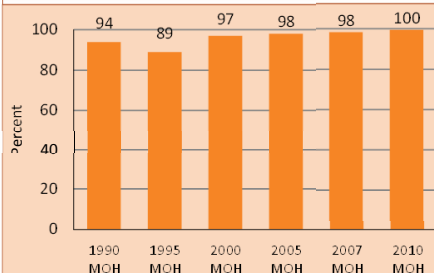


Source: DHS, MICS, Other NS

\* See Annex/website for indicator definition

#### Skilled attendant at delivery

Percent live births attended by skilled health personnel



Source: MOH

#### Prevention of mother-to-child transmission of HIV

Eligible HIV+ pregnant women receiving ART for their own health (% of total ARVs)

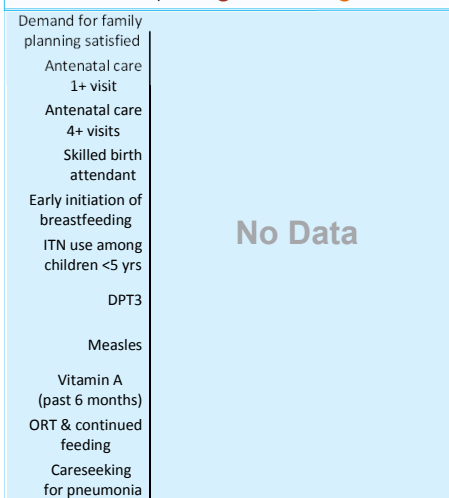
■ Percent HIV+ pregnant women receiving ARVs for PMTCT  
□ Uncertainty range around the estimate

No Data

### EQUITY

#### Socioeconomic inequities in coverage

Household wealth quintile: ● Poorest 20% ● Richest 20%



No Data

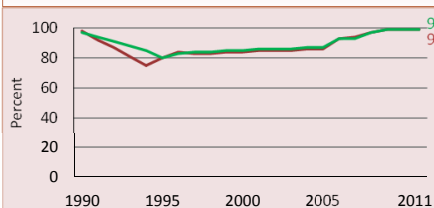
Coverage levels are shown for the poorest 20% (red circles) and the richest 20% (orange circles). The longer the line between the two groups, the greater the inequality. These estimates may differ from other charts due to differences in data sources.

Developed by Countdown to report on core indicators identified by the UN Commission on Information and Accountability, in support of the Global Strategy for Women's and Children's Health

### CHILD HEALTH

#### Immunization

■ Percent of children immunized against measles  
■ Percent of children immunized with 3 doses DTP  
■ Percent of children immunized with 3 doses Hib



Source: WHO/UNICEF

#### Pneumonia treatment

■ Percent children <5 years with suspected pneumonia taken to appropriate health provider  
■ Percent children <5 years with suspected pneumonia receiving antibiotics

No Data

### NUTRITION

Wasting prevalence (moderate and severe, %) 3 (2002)

Low birthweight incidence (moderate and severe, %) 3 (2008)

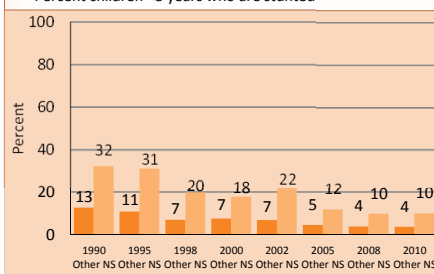
Early initiation of breastfeeding (within 1 hr of birth, %) 41 (2008)

Introduction of solid, semi-solid/soft foods (%) 43 (2008)

Vitamin A two dose coverage (%) -

#### Underweight and stunting prevalence

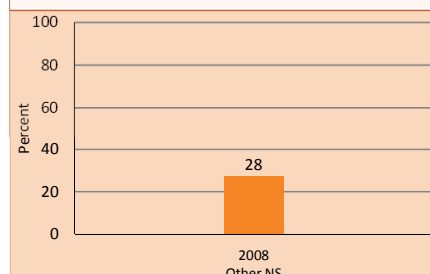
■ Percent children <5 years who are underweight  
■ Percent children <5 years who are stunted



Note: Based on 2006 WHO reference population

#### Exclusive breastfeeding

Percent infants <6 months exclusively breastfed





# Countdown to 2015

## Maternal, Newborn & Child Survival

# Comoros

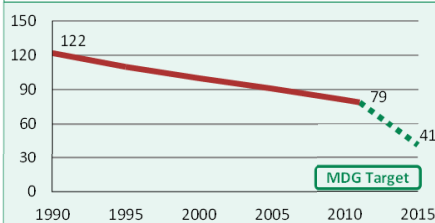
May 2013

## DEMOGRAPHICS

Total population (000)	754	(2011)
Total under-five population (000)	124	(2011)
Births (000)	28	(2011)
Birth registration (%)	83	(2011)
Total under-five deaths (000)	2	(2011)
Neonatal deaths: % of all under-5 deaths	41	(2011)
Neonatal mortality rate (per 1000 live births)	32	(2011)
Infant mortality rate (per 1000 live births)	59	(2011)
Stillbirth rate (per 1000 total births)	27	(2009)
Total maternal deaths	79	(2010)
Lifetime risk of maternal death (1 in N)	67	(2010)
Total fertility rate (per woman)	4.9	(2011)
Adolescent birth rate (per 1000 women)	95	(2000)

### Under-five mortality rate

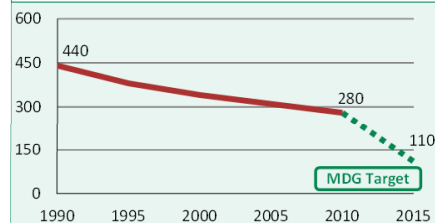
Deaths per 1000 live births



Source: IGME 2012

### Maternal mortality ratio

Deaths per 100,000 live births

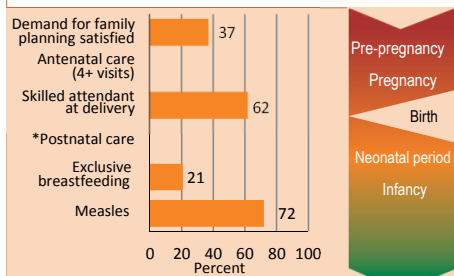


Source: MMEIG 2012

Note: MDG target calculated by Countdown to 2015.

## MATERNAL AND NEWBORN HEALTH

### Coverage along the continuum of care

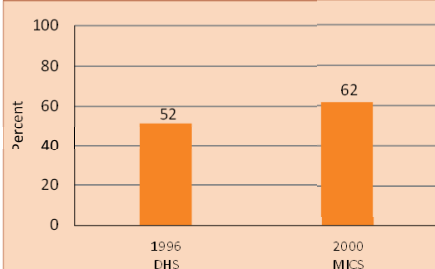


Source: DHS, MICS, Other NS

\* See Annex/website for indicator definition

### Skilled attendant at delivery

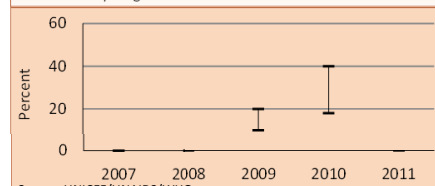
Percent live births attended by skilled health personnel



### Prevention of mother-to-child transmission of HIV

Eligible HIV+ pregnant women receiving ART for their own health (% of total ARVs)

■ Percent HIV+ pregnant women receiving ARVs for PMTCT  
■ Uncertainty range around the estimate

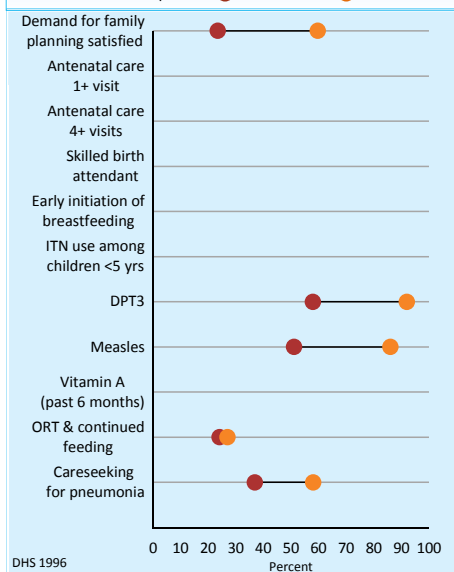


Source: UNICEF/UNAIDS/WHO

## EQUITY

### Socioeconomic inequities in coverage

Household wealth quintile: ● Poorest 20% ● Richest 20%



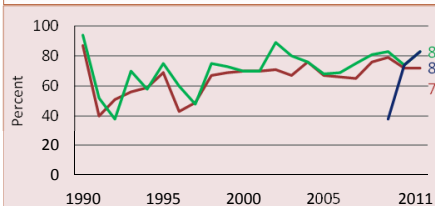
DHS 1996

Coverage levels are shown for the poorest 20% (red circles) and the richest 20% (orange circles). The longer the line between the two groups, the greater the inequality. These estimates may differ from other charts due to differences in data sources.

## CHILD HEALTH

### Immunization

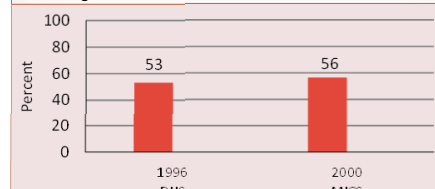
■ Percent of children immunized against measles  
■ Percent of children immunized with 3 doses DTP  
■ Percent of children immunized with 3 doses Hib



Source: WHO/UNICEF

### Pneumonia treatment

■ Percent children <5 years with suspected pneumonia taken to appropriate health provider  
■ Percent children <5 years with suspected pneumonia receiving antibiotics



## NUTRITION

Wasting prevalence (moderate and severe, %) - -

Low birthweight incidence (moderate and severe, %) 25 (2000)

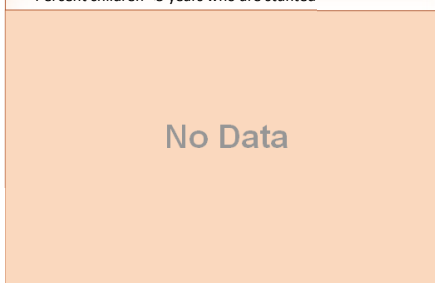
Early initiation of breastfeeding (within 1 hr of birth, %) 25 (1996)

Introduction of solid, semi-solid/soft foods (%) 34 (2000)

Vitamin A two dose coverage (%) 18 (2010)

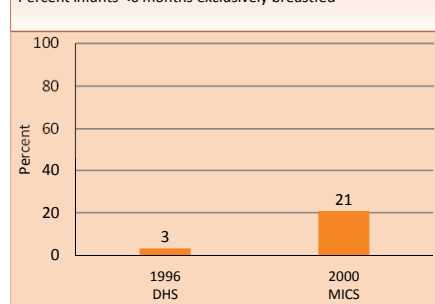
### Underweight and stunting prevalence

■ Percent children <5 years who are underweight  
■ Percent children <5 years who are stunted



### Exclusive breastfeeding

Percent infants <6 months exclusively breastfed



Developed by Countdown to report on core indicators identified by the UN Commission on Information and Accountability, in support of the Global Strategy for Women's and Children's Health



# Countdown to 2015

Maternal, Newborn & Child Survival

## Congo

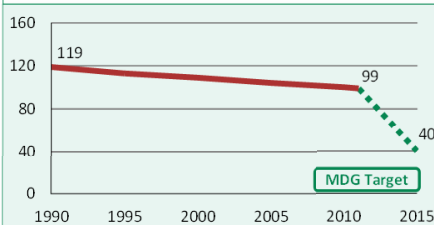
May 2013

### DEMOGRAPHICS

Total population (000)	4,140	(2011)
Total under-five population (000)	636	(2011)
Births (000)	145	(2011)
Birth registration (%)	81	(2009)
Total under-five deaths (000)	14	(2011)
Neonatal deaths: % of all under-5 deaths	33	(2011)
Neonatal mortality rate (per 1000 live births)	32	(2011)
Infant mortality rate (per 1000 live births)	64	(2011)
Stillbirth rate (per 1000 total births)	26	(2009)
Total maternal deaths	800	(2010)
Lifetime risk of maternal death (1 in N)	39	(2010)
Total fertility rate (per woman)	4.5	(2011)
Adolescent birth rate (per 1000 women)	132	(2003)

#### Under-five mortality rate

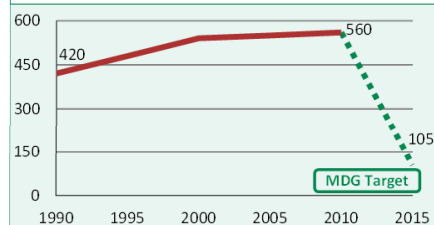
Deaths per 1000 live births



Source: IGME 2012

#### Maternal mortality ratio

Deaths per 100,000 live births

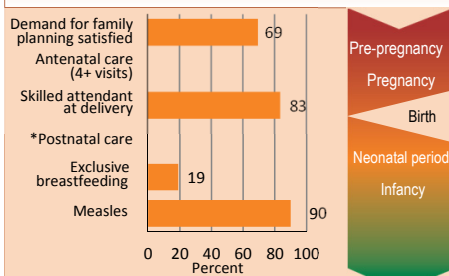


Source: MMEIG 2012

Note: MDG target calculated by Countdown to 2015.

### MATERNAL AND NEWBORN HEALTH

#### Coverage along the continuum of care

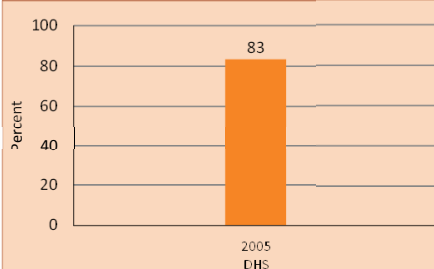


Source: DHS, MICS, Other NS

\* See Annex/website for indicator definition

#### Skilled attendant at delivery

Percent live births attended by skilled health personnel

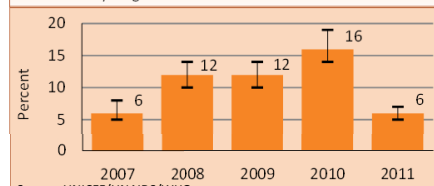


DHS

#### Prevention of mother-to-child transmission of HIV

Eligible HIV+ pregnant women receiving ART for their own health (% of total ARVs)

■ Percent HIV+ pregnant women receiving ARVs for PMTCT  
■ Uncertainty range around the estimate

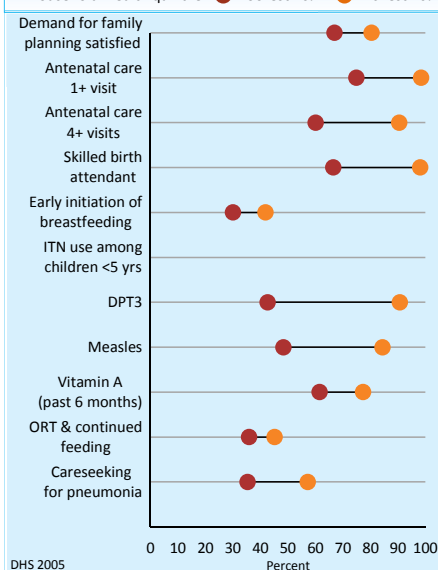


Source: UNICEF/UNAIDS/WHO

### EQUITY

#### Socioeconomic inequities in coverage

Household wealth quintile: ● Poorest 20% ● Richest 20%



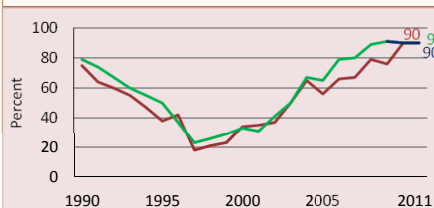
DHS 2005

Coverage levels are shown for the poorest 20% (red circles) and the richest 20% (orange circles). The longer the line between the two groups, the greater the inequality. These estimates may differ from other charts due to differences in data sources.

### CHILD HEALTH

#### Immunization

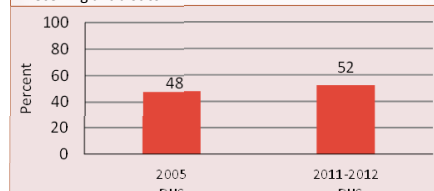
■ Percent of children immunized against measles  
■ Percent of children immunized with 3 doses DTP  
■ Percent of children immunized with 3 doses Hib



Source: WHO/UNICEF

#### Pneumonia treatment

■ Percent children <5 years with suspected pneumonia taken to appropriate health provider  
■ Percent children <5 years with suspected pneumonia receiving antibiotics



DHS

pDHS

### NUTRITION

Wasting prevalence (moderate and severe, %) 8 (2005)

Low birthweight incidence (moderate and severe, %) 13 (2005)

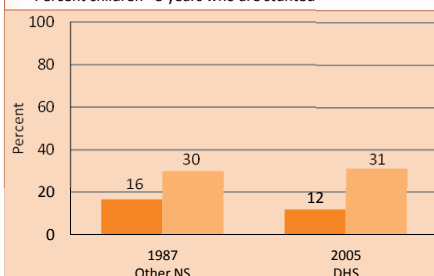
Early initiation of breastfeeding (within 1 hr of birth, %) 39 (2005)

Introduction of solid, semi-solid/soft foods (%) 78 (2005)

Vitamin A two dose coverage (%) 84 (2010)

#### Underweight and stunting prevalence

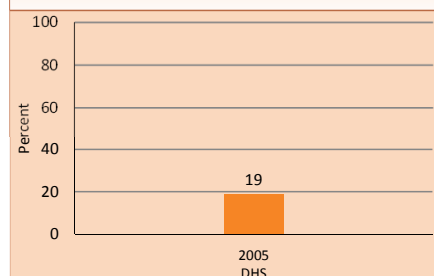
■ Percent children <5 years who are underweight  
■ Percent children <5 years who are stunted



Note: Based on 2006 WHO reference population

#### Exclusive breastfeeding

Percent infants <6 months exclusively breastfed



DHS

Developed by Countdown to report on core indicators identified by the UN Commission on Information and Accountability, in support of the Global Strategy for Women's and Children's Health



# Countdown to 2015

Maternal, Newborn & Child Survival

## Congo, Democratic Republic of the

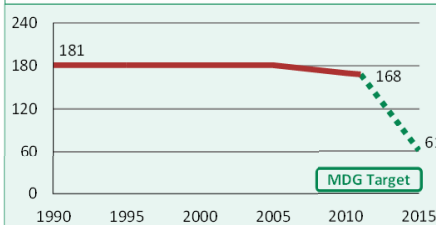
May 2013

### DEMOGRAPHICS

Total population (000)	67,758	(2011)
Total under-five population (000)	12,046	(2011)
Births (000)	2,912	(2011)
Birth registration (%)	28	(2010)
Total under-five deaths (000)	465	(2011)
Neonatal deaths: % of all under-5 deaths	29	(2011)
Neonatal mortality rate (per 1000 live births)	47	(2011)
Infant mortality rate (per 1000 live births)	111	(2011)
Stillbirth rate (per 1000 total births)	29	(2009)
Total maternal deaths	15,000	(2010)
Lifetime risk of maternal death (1 in N)	30	(2010)
Total fertility rate (per woman)	5.7	(2011)
Adolescent birth rate (per 1000 women)	135	(2009)

#### Under-five mortality rate

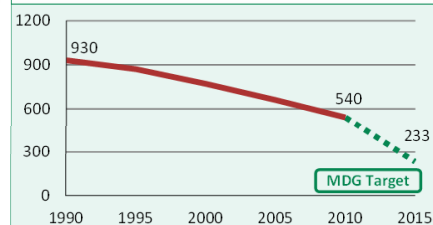
Deaths per 1000 live births



Source: IGME 2012

#### Maternal mortality ratio

Deaths per 100,000 live births

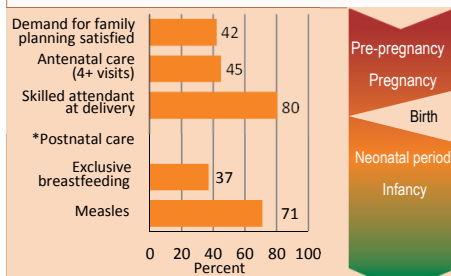


Source: MMEIG 2012

Note: MDG target calculated by Countdown to 2015.

### MATERNAL AND NEWBORN HEALTH

#### Coverage along the continuum of care

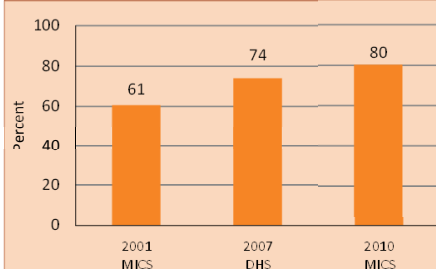


Source: DHS, MICS, Other NS

\* See Annex/website for indicator definition

#### Skilled attendant at delivery

Percent live births attended by skilled health personnel



#### Prevention of mother-to-child transmission of HIV

Eligible HIV+ pregnant women receiving ART for their own health (% of total ARVs)

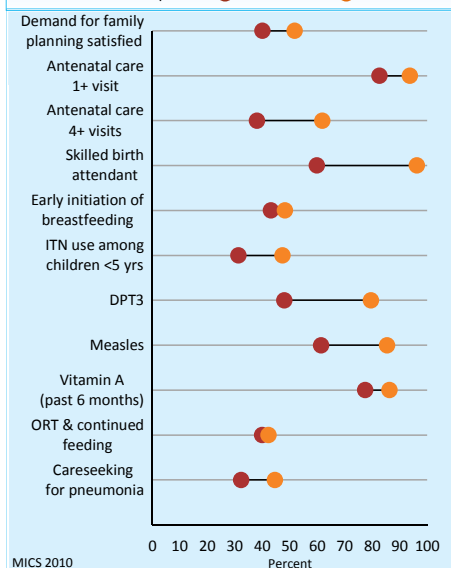
■ Percent HIV+ pregnant women receiving ARVs for PMTCT  
□ Uncertainty range around the estimate

No Data

### EQUITY

#### Socioeconomic inequities in coverage

Household wealth quintile: ● Poorest 20% ● Richest 20%



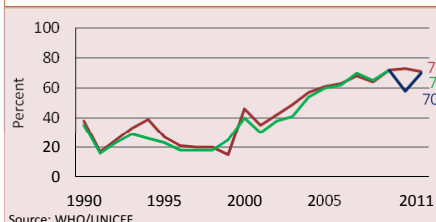
Coverage levels are shown for the poorest 20% (red circles) and the richest 20% (orange circles). The longer the line between the two groups, the greater the inequality. These estimates may differ from other charts due to differences in data sources.

Developed by Countdown to report on core indicators identified by the UN Commission on Information and Accountability, in support of the Global Strategy for Women's and Children's Health

### CHILD HEALTH

#### Immunization

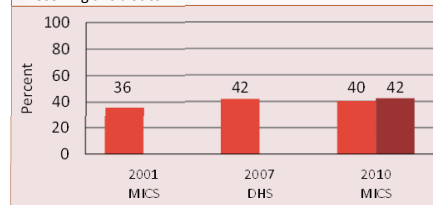
■ Percent of children immunized against measles  
■ Percent of children immunized with 3 doses DTP  
■ Percent of children immunized with 3 doses Hib



Source: WHO/UNICEF

#### Pneumonia treatment

■ Percent children <5 years with suspected pneumonia taken to appropriate health provider  
■ Percent children <5 years with suspected pneumonia receiving antibiotics



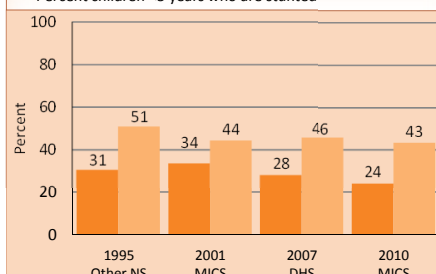
### NUTRITION

Wasting prevalence (moderate and severe, %) 9 (2010)  
Low birthweight incidence (moderate and severe, %) 10 (2010)

Early initiation of breastfeeding (within 1 hr of birth, %) 43 (2010)  
Introduction of solid, semi-solid/soft foods (%) 52 (2010)  
Vitamin A two dose coverage (%) 98 (2011)

#### Underweight and stunting prevalence

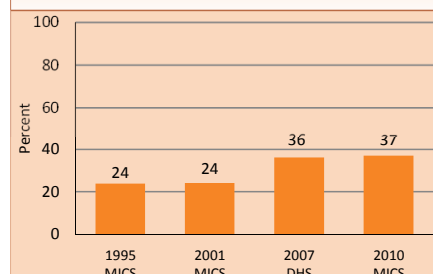
■ Percent children <5 years who are underweight  
■ Percent children <5 years who are stunted



Note: Based on 2006 WHO reference population

#### Exclusive breastfeeding

Percent infants <6 months exclusively breastfed





# Countdown to 2015

Maternal, Newborn & Child Survival

## Côte d'Ivoire

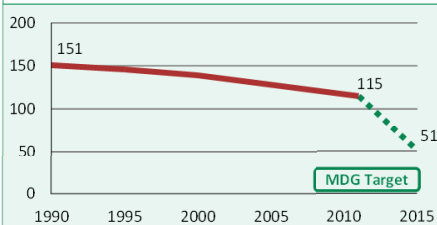
May 2013

### DEMOGRAPHICS

Total population (000)	20,153	(2011)
Total under-five population (000)	2,996	(2011)
Births (000)	679	(2011)
Birth registration (%)	55	(2009)
Total under-five deaths (000)	75	(2011)
Neonatal deaths: % of all under-5 deaths	37	(2011)
Neonatal mortality rate (per 1000 live births)	41	(2011)
Infant mortality rate (per 1000 live births)	81	(2011)
Stillbirth rate (per 1000 total births)	27	(2009)
Total maternal deaths	2,700	(2010)
Lifetime risk of maternal death (1 in N)	53	(2010)
Total fertility rate (per woman)	4.3	(2011)
Adolescent birth rate (per 1000 women)	111	(2006)

#### Under-five mortality rate

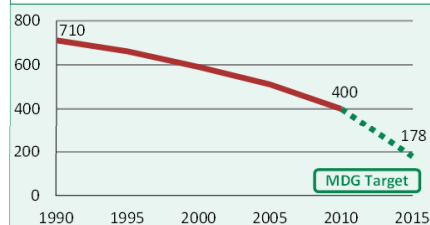
Deaths per 1000 live births



Source: IGME 2012

#### Maternal mortality ratio

Deaths per 100,000 live births

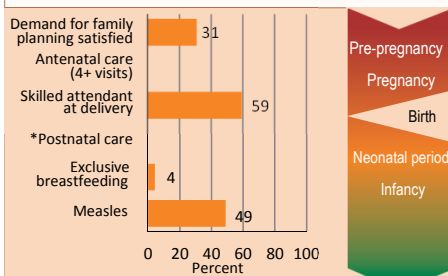


Source: MMEIG 2012

Note: MDG target calculated by Countdown to 2015.

### MATERNAL AND NEWBORN HEALTH

#### Coverage along the continuum of care

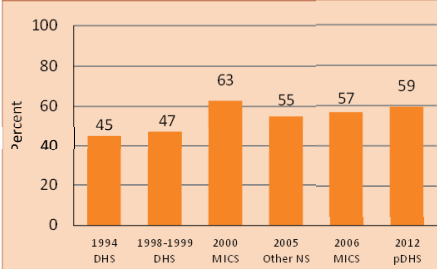


Source: DHS, MICS, Other NS

\* See Annex/website for indicator definition

#### Skilled attendant at delivery

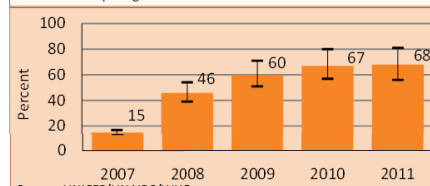
Percent live births attended by skilled health personnel



#### Prevention of mother-to-child transmission of HIV

Eligible HIV+ pregnant women receiving ART for their own health (% of total ARVs)

■ Percent HIV+ pregnant women receiving ARVs for PMTCT  
■ Uncertainty range around the estimate

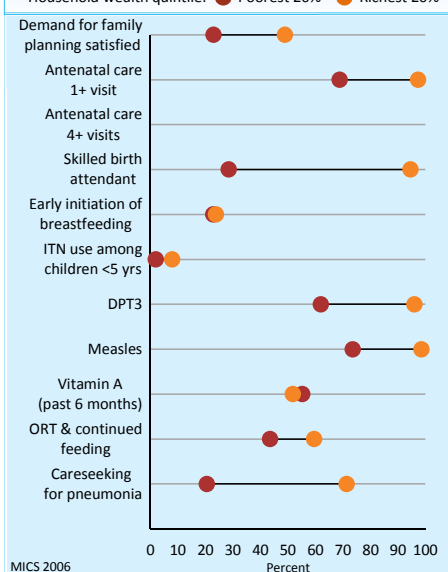


Source: UNICEF/UNAIDS/WHO

### EQUITY

#### Socioeconomic inequities in coverage

Household wealth quintile: ● Poorest 20% ● Richest 20%



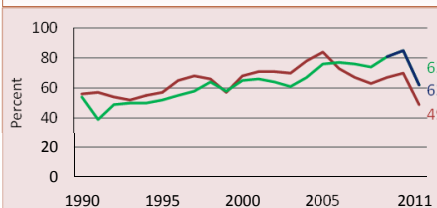
Coverage levels are shown for the poorest 20% (red circles) and the richest 20% (orange circles). The longer the line between the two groups, the greater the inequality. These estimates may differ from other charts due to differences in data sources.

Developed by Countdown to report on core indicators identified by the UN Commission on Information and Accountability, in support of the Global Strategy for Women's and Children's Health

### CHILD HEALTH

#### Immunization

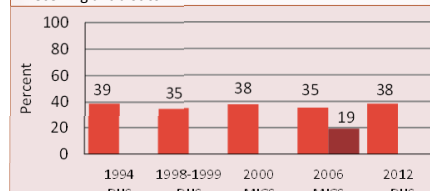
■ Percent of children immunized against measles  
■ Percent of children immunized with 3 doses DTP  
■ Percent of children immunized with 3 doses Hib



Source: WHO/UNICEF

#### Pneumonia treatment

■ Percent children <5 years with suspected pneumonia taken to appropriate health provider  
■ Percent children <5 years with suspected pneumonia receiving antibiotics



### NUTRITION

Wasting prevalence (moderate and severe, %) 5 (2011)

Low birthweight incidence (moderate and severe, %) 17 (2006)

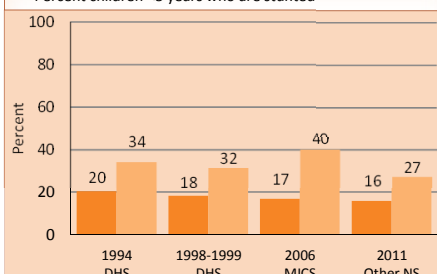
Early initiation of breastfeeding (within 1 hr of birth, %) 25 (2006)

Introduction of solid, semi-solid/soft foods (%) 51 (2006)

Vitamin A two dose coverage (%) 100 (2011)

#### Underweight and stunting prevalence

■ Percent children <5 years who are underweight  
■ Percent children <5 years who are stunted



Note: Based on 2006 WHO reference population

#### Exclusive breastfeeding

Percent infants <6 months exclusively breastfed

