



Country profiles

The information in the country profiles, customized to showcase the core indicators selected by the Commission on Information and Accountability for Women's and Children's Health, is intended to help policy makers and their partners assess progress and prioritize actions to save women's and children's lives. These country profiles reflect the data that are available for each country. Most of the data for the Commission indicators come from household surveys: mainly the USAID-supported Demographic and Health Surveys and the UNICEF-supported Multiple Indicator Cluster Surveys.^{xxix} More information on the data sources for the Commission indicators is available in the annexes to previous Countdown reports: www.countdown2015mnch.org/reports-and-articles.

New survey data are available for 22 countries since the publication of Countdown's 2012 Report. Coverage estimates that are missing or that are more than five years old indicate an urgent need for concerted action to increase data collection efforts so that updated evidence is available for policy and program development.

This report contains profiles for 75 countries with high burdens of maternal and/or child mortality, including the 49 lowest-income countries covered by the Global Strategy for Women's and Children's Health. Profiles are included for the following countries:

| | | |
|-----------------------------------|--|------------------------------|
| Afghanistan | Gambia | Nigeria |
| Angola | Ghana | Pakistan |
| Azerbaijan | Guatemala | Papua New Guinea |
| Bangladesh | Guinea | Peru |
| Benin | Guinea-Bissau | Philippines |
| Bolivia | Haiti | Rwanda |
| Botswana | India | São Tomé and Príncipe |
| Brazil | Indonesia | Senegal |
| Burkina Faso | Iraq | Sierra Leone |
| Burundi | Kenya | Solomon Islands |
| Cambodia | Korea, Democratic People's Republic of | Somalia |
| Cameroon | Kyrgyzstan | South Africa |
| Central African Republic | Lao People's Democratic Republic | South Sudan |
| Chad | Lesotho | Sudan |
| China | Liberia | Swaziland |
| Comoros | Madagascar | Tajikistan |
| Congo | Malawi | Tanzania, United Republic of |
| Congo, Democratic Republic of the | Mali | Togo |
| Côte d'Ivoire | Mauritania | Turkmenistan |
| Djibouti | Mexico | Uganda |
| Egypt | Morocco | Uzbekistan |
| Equatorial Guinea | Mozambique | Vietnam |
| Eritrea | Myanmar | Yemen |
| Ethiopia | Nepal | Zambia |
| Gabon | Niger | Zimbabwe |



Countdown to 2015

Maternal, Newborn & Child Survival

São Tomé and Príncipe

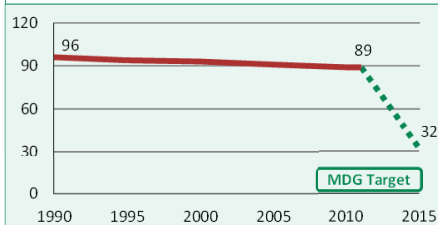
May 2013

DEMOGRAPHICS

| | | |
|--|-----|-------------|
| Total population (000) | 169 | (2011) |
| Total under-five population (000) | 24 | (2011) |
| Births (000) | 5 | (2011) |
| Birth registration (%) | 75 | (2008-2009) |
| Total under-five deaths (000) | 0 | (2011) |
| Neonatal deaths: % of all under-5 deaths | 34 | (2011) |
| Neonatal mortality rate (per 1000 live births) | 29 | (2011) |
| Infant mortality rate (per 1000 live births) | 58 | (2011) |
| Stillbirth rate (per 1000 total births) | 22 | (2009) |
| Total maternal deaths | 4 | (2010) |
| Lifetime risk of maternal death (1 in N) | 330 | (2010) |
| Total fertility rate (per woman) | 3.6 | (2011) |
| Adolescent birth rate (per 1000 women) | 110 | (2006) |

Under-five mortality rate

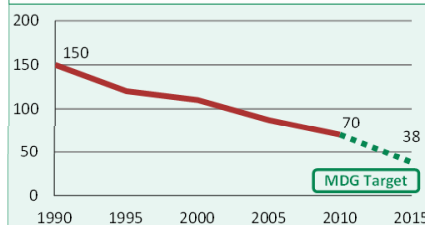
Deaths per 1000 live births



Source: IGME 2012

Maternal mortality ratio

Deaths per 100,000 live births

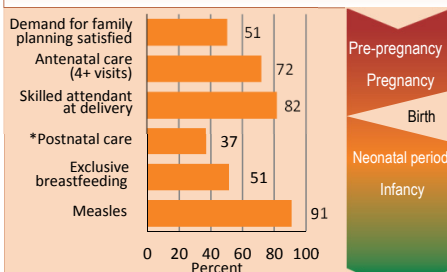


Source: MMEIG 2012

Note: MDG target calculated by Countdown to 2015.

MATERNAL AND NEWBORN HEALTH

Coverage along the continuum of care

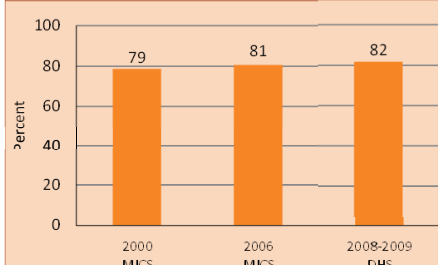


Source: DHS, MICS, Other NS

* See Annex/website for indicator definition

Skilled attendant at delivery

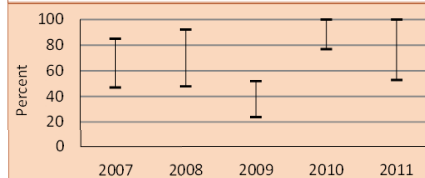
Percent live births attended by skilled health personnel



Prevention of mother-to-child transmission of HIV

Eligible HIV+ pregnant women receiving ART for their own health (% of total ARVs)

■ Percent HIV+ pregnant women receiving ARVs for PMTCT
■ Uncertainty range around the estimate

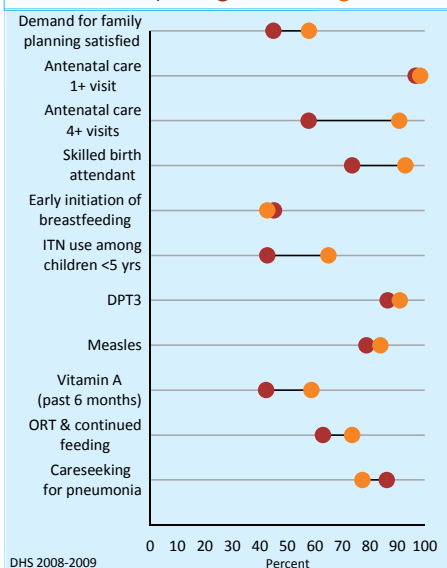


Source: UNICEF/UNAIDS/WHO

EQUITY

Socioeconomic inequities in coverage

Household wealth quintile: ● Poorest 20% ● Richest 20%



DHS 2008-2009

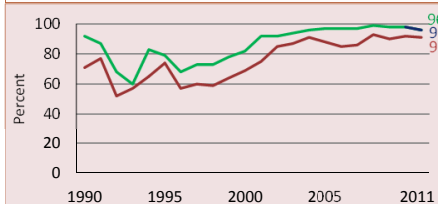
Coverage levels are shown for the poorest 20% (red circles) and the richest 20% (orange circles). The longer the line between the two groups, the greater the inequality. These estimates may differ from other charts due to differences in data sources.

Developed by Countdown to report on core indicators identified by the UN Commission on Information and Accountability, in support of the Global Strategy for Women's and Children's Health

CHILD HEALTH

Immunization

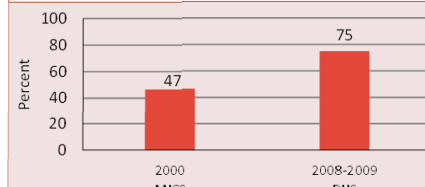
■ Percent of children immunized against measles
■ Percent of children immunized with 3 doses DTP
■ Percent of children immunized with 3 doses Hib



Source: WHO/UNICEF

Pneumonia treatment

■ Percent children <5 years with suspected pneumonia taken to appropriate health provider
■ Percent children <5 years with suspected pneumonia receiving antibiotics



NUTRITION

Wasting prevalence (moderate and severe, %) 11 (2008-2009)

Low birthweight incidence (moderate and severe, %) 8 (2006)

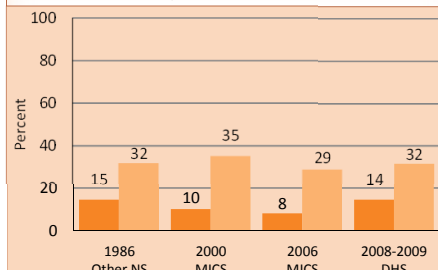
Early initiation of breastfeeding (within 1 hr of birth, %) 45 (2008-2009)

Introduction of solid, semi-solid/soft foods (%) 74 (2008-2009)

Vitamin A two dose coverage (%) 44 (2011)

Underweight and stunting prevalence

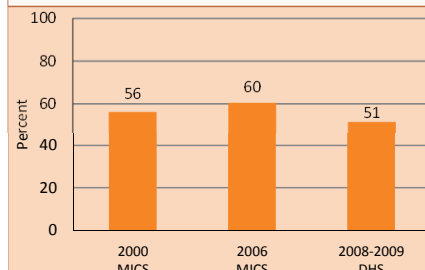
■ Percent children <5 years who are underweight
■ Percent children <5 years who are stunted



Note: Based on 2006 WHO reference population

Exclusive breastfeeding

Percent infants <6 months exclusively breastfed





Countdown to 2015

Maternal, Newborn & Child Survival

Senegal

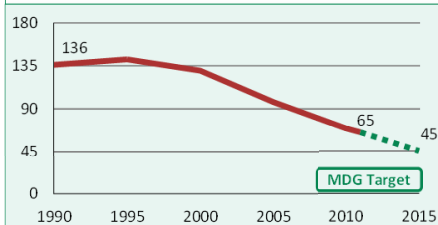
May 2013

DEMOGRAPHICS

| | | |
|--|--------|-------------|
| Total population (000) | 12,768 | (2011) |
| Total under-five population (000) | 2,127 | (2011) |
| Births (000) | 471 | (2011) |
| Birth registration (%) | 75 | (2010-2011) |
| Total under-five deaths (000) | 30 | (2011) |
| Neonatal deaths: % of all under-5 deaths | 41 | (2011) |
| Neonatal mortality rate (per 1000 live births) | 26 | (2011) |
| Infant mortality rate (per 1000 live births) | 47 | (2011) |
| Stillbirth rate (per 1000 total births) | 34 | (2009) |
| Total maternal deaths | 1,700 | (2010) |
| Lifetime risk of maternal death (1 in N) | 54 | (2010) |
| Total fertility rate (per woman) | 4.7 | (2011) |
| Adolescent birth rate (per 1000 women) | 93 | (2010) |

Under-five mortality rate

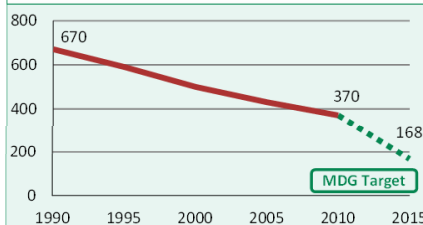
Deaths per 1000 live births



Source: IGME 2012

Maternal mortality ratio

Deaths per 100,000 live births

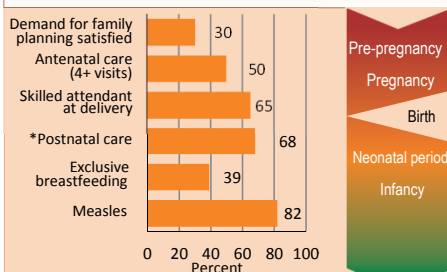


Source: MMEIG 2012

Note: MDG target calculated by Countdown to 2015.

MATERNAL AND NEWBORN HEALTH

Coverage along the continuum of care

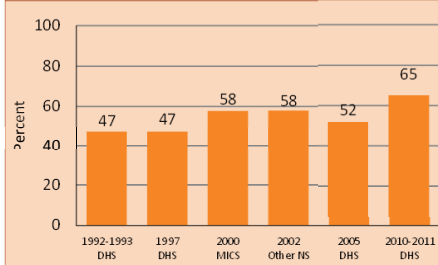


Source: DHS, MICS, Other NS

* See Annex/website for indicator definition

Skilled attendant at delivery

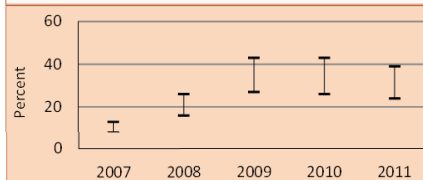
Percent live births attended by skilled health personnel



Prevention of mother-to-child transmission of HIV

Eligible HIV+ pregnant women receiving ART for their own health (% of total ARVs)

■ Percent HIV+ pregnant women receiving ARVs for PMTCT
■ Uncertainty range around the estimate

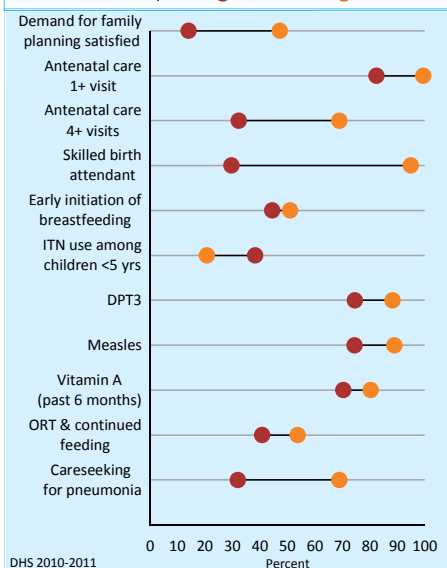


Source: UNICEF/UNAIDS/WHO

EQUITY

Socioeconomic inequities in coverage

Household wealth quintile: ● Poorest 20% ● Richest 20%



DHS 2010-2011

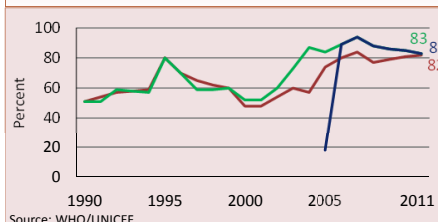
Coverage levels are shown for the poorest 20% (red circles) and the richest 20% (orange circles). The longer the line between the two groups, the greater the inequality. These estimates may differ from other charts due to differences in data sources.

Developed by Countdown to report on core indicators identified by the UN Commission on Information and Accountability, in support of the Global Strategy for Women's and Children's Health

CHILD HEALTH

Immunization

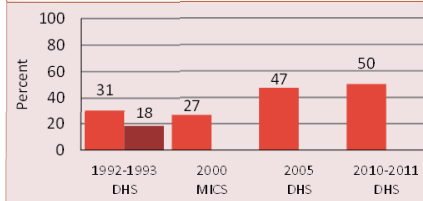
■ Percent of children immunized against measles
■ Percent of children immunized with 3 doses DTP
■ Percent of children immunized with 3 doses Hib



Source: WHO/UNICEF

Pneumonia treatment

■ Percent children <5 years with suspected pneumonia taken to appropriate health provider
■ Percent children <5 years with suspected pneumonia receiving antibiotics



NUTRITION

Wasting prevalence (moderate and severe, %) 10 (2010-2011)

Low birthweight incidence (moderate and severe, %) 19 (2010-2011)

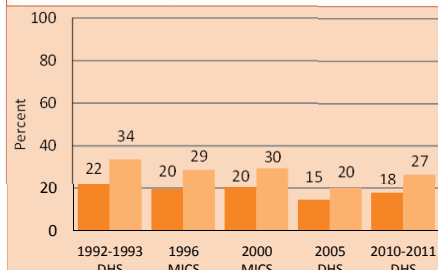
Early initiation of breastfeeding (within 1 hr of birth, %) 23 (2005)

Introduction of solid, semi-solid/soft foods (%) 61 (2010-2011)

Vitamin A two dose coverage (%) -

Underweight and stunting prevalence

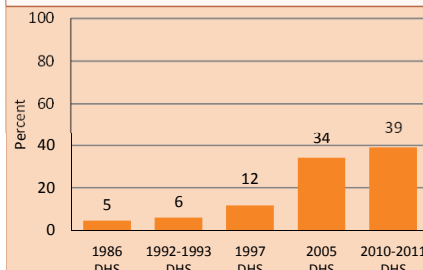
■ Percent children <5 years who are underweight
■ Percent children <5 years who are stunted



Note: Based on 2006 WHO reference population

Exclusive breastfeeding

Percent infants <6 months exclusively breastfed





Countdown to 2015

Maternal, Newborn & Child Survival

Sierra Leone

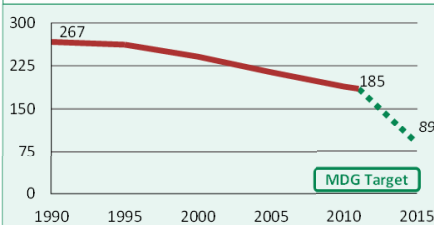
May 2013

DEMOGRAPHICS

| | | |
|--|-------|--------|
| Total population (000) | 5,997 | (2011) |
| Total under-five population (000) | 985 | (2011) |
| Births (000) | 227 | (2011) |
| Birth registration (%) | 78 | (2010) |
| Total under-five deaths (000) | 42 | (2011) |
| Neonatal deaths: % of all under-5 deaths | 27 | (2011) |
| Neonatal mortality rate (per 1000 live births) | 49 | (2011) |
| Infant mortality rate (per 1000 live births) | 119 | (2011) |
| Stillbirth rate (per 1000 total births) | 30 | (2009) |
| Total maternal deaths | 2,000 | (2010) |
| Lifetime risk of maternal death (1 in N) | 23 | (2010) |
| Total fertility rate (per woman) | 4.9 | (2011) |
| Adolescent birth rate (per 1000 women) | 98 | (2005) |

Under-five mortality rate

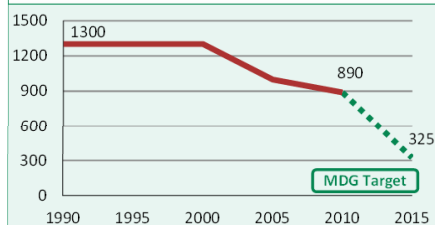
Deaths per 1000 live births



Source: IGME 2012

Maternal mortality ratio

Deaths per 100,000 live births

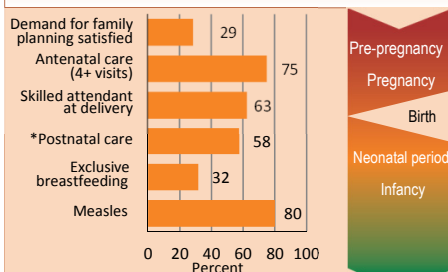


Source: MMEIG 2012

Note: MDG target calculated by Countdown to 2015.

MATERNAL AND NEWBORN HEALTH

Coverage along the continuum of care

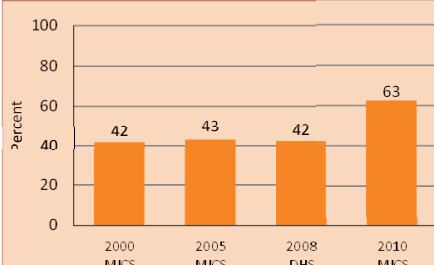


Source: DHS, MICS, Other NS

* See Annex/website for indicator definition

Skilled attendant at delivery

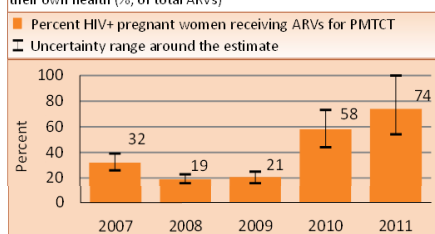
Percent live births attended by skilled health personnel



Source: MICS, DHS, MICS

Prevention of mother-to-child transmission of HIV

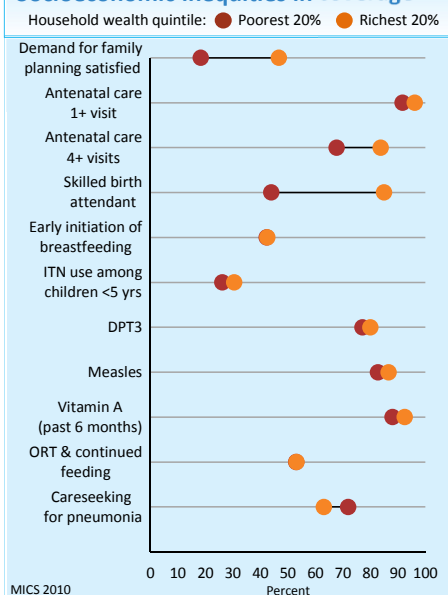
Eligible HIV+ pregnant women receiving ART for their own health (% of total ARVs)



Source: UNICEF/UNAIDS/WHO

EQUITY

Socioeconomic inequities in coverage

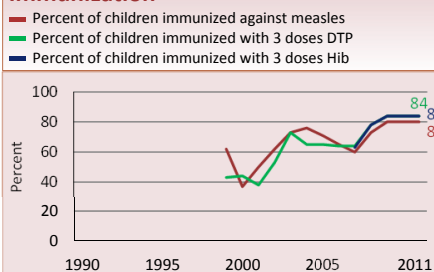


Coverage levels are shown for the poorest 20% (red circles) and the richest 20% (orange circles). The longer the line between the two groups, the greater the inequality. These estimates may differ from other charts due to differences in data sources.

Developed by Countdown to report on core indicators identified by the UN Commission on Information and Accountability, in support of the Global Strategy for Women's and Children's Health

CHILD HEALTH

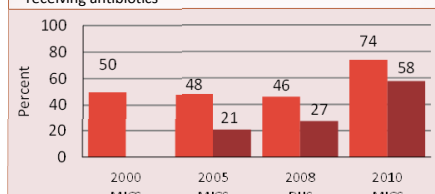
Immunization



Source: WHO/UNICEF

Pneumonia treatment

Percent children <5 years with suspected pneumonia taken to appropriate health provider



Source: MICS, DHS, MICS

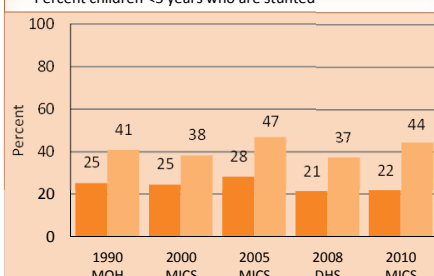
NUTRITION

| | | |
|--|----|--------|
| Wasting prevalence (moderate and severe, %) | 9 | (2010) |
| Low birthweight incidence (moderate and severe, %) | 11 | (2010) |

| | | |
|---|----|--------|
| Early initiation of breastfeeding (within 1 hr of birth, %) | 45 | (2010) |
| Introduction of solid, semi-solid/soft foods (%) | 25 | (2008) |
| Vitamin A two dose coverage (%) | 99 | (2011) |

Underweight and stunting prevalence

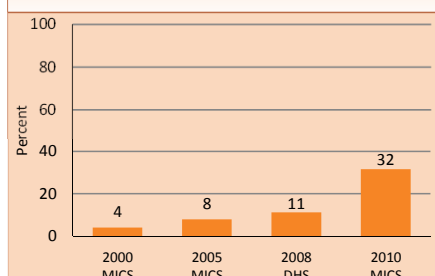
Percent children <5 years who are underweight



Note: Based on 2006 WHO reference population

Exclusive breastfeeding

Percent infants <6 months exclusively breastfed





Countdown to 2015

Maternal, Newborn & Child Survival

Solomon Islands

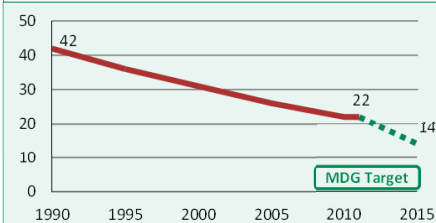
May 2013

DEMOGRAPHICS

| | | |
|--|-----|--------|
| Total population (000) | 552 | (2011) |
| Total under-five population (000) | 81 | (2011) |
| Births (000) | 17 | (2011) |
| Birth registration (%) | - | - |
| Total under-five deaths (000) | 0 | (2011) |
| Neonatal deaths: % of all under-5 deaths | 50 | (2011) |
| Neonatal mortality rate (per 1000 live births) | 11 | (2011) |
| Infant mortality rate (per 1000 live births) | 18 | (2011) |
| Stillbirth rate (per 1000 total births) | 15 | (2009) |
| Total maternal deaths | 16 | (2010) |
| Lifetime risk of maternal death (1 in N) | 240 | (2010) |
| Total fertility rate (per woman) | 4.2 | (2011) |
| Adolescent birth rate (per 1000 women) | 70 | (2005) |

Under-five mortality rate

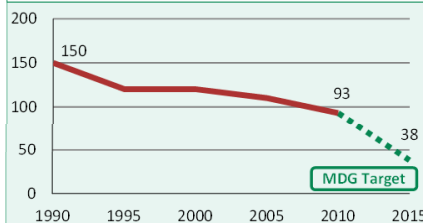
Deaths per 1000 live births



Source: IGME 2012

Maternal mortality ratio

Deaths per 100,000 live births

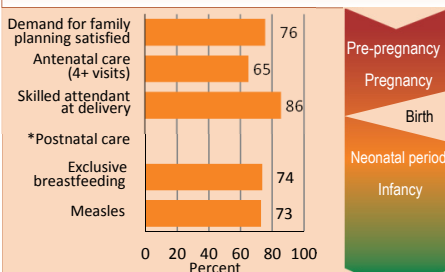


Source: MMEIG 2012

Note: MDG target calculated by Countdown to 2015.

MATERNAL AND NEWBORN HEALTH

Coverage along the continuum of care

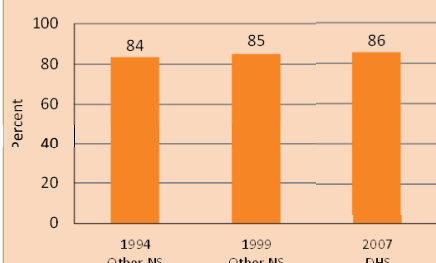


Source: DHS, MICS, Other NS

* See Annex/website for indicator definition

Skilled attendant at delivery

Percent live births attended by skilled health personnel



Source: DHS, MICS, Other NS

Prevention of mother-to-child transmission of HIV

Eligible HIV+ pregnant women receiving ART for their own health (% of total ARVs)

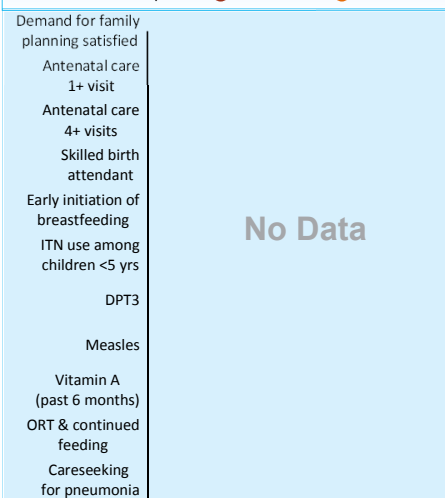
■ Percent HIV+ pregnant women receiving ARVs for PMTCT
□ Uncertainty range around the estimate

No Data

EQUITY

Socioeconomic inequities in coverage

Household wealth quintile: ● Poorest 20% ● Richest 20%



No Data

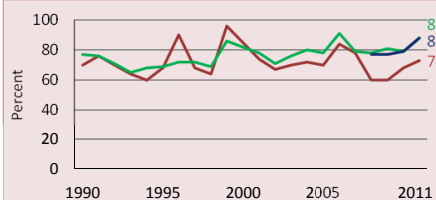
Coverage levels are shown for the poorest 20% (red circles) and the richest 20% (orange circles). The longer the line between the two groups, the greater the inequality. These estimates may differ from other charts due to differences in data sources.

Developed by Countdown to report on core indicators identified by the UN Commission on Information and Accountability, in support of the Global Strategy for Women's and Children's Health

CHILD HEALTH

Immunization

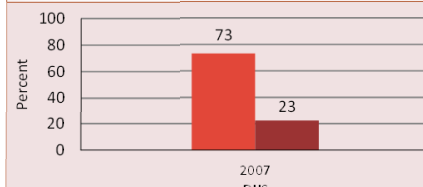
■ Percent of children immunized against measles
■ Percent of children immunized with 3 doses DTP
■ Percent of children immunized with 3 doses Hib



Source: WHO/UNICEF

Pneumonia treatment

■ Percent children <5 years with suspected pneumonia taken to appropriate health provider
■ Percent children <5 years with suspected pneumonia receiving antibiotics



Source: DHS

NUTRITION

Wasting prevalence (moderate and severe, %)

4 (2007)

Low birthweight incidence (moderate and severe, %)

13 (2007)

Early initiation of breastfeeding (within 1 hr of birth, %)

75 (2007)

Introduction of solid, semi-solid/soft foods (%)

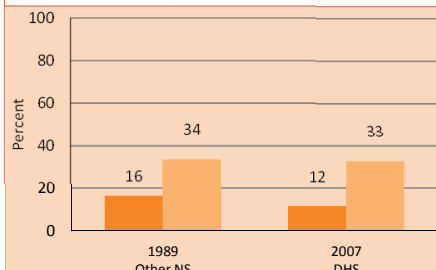
81 (2007)

Vitamin A two dose coverage (%)

-

Underweight and stunting prevalence

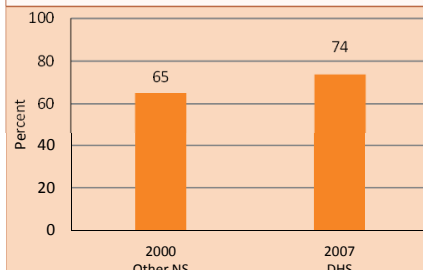
■ Percent children <5 years who are underweight
■ Percent children <5 years who are stunted



Note: Based on 2006 WHO reference population

Exclusive breastfeeding

Percent infants <6 months exclusively breastfed





Countdown to 2015

Maternal, Newborn & Child Survival

Somalia

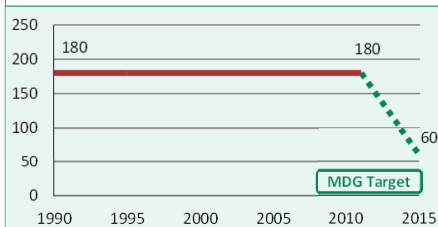
May 2013

DEMOGRAPHICS

| | | |
|--|-------|--------|
| Total population (000) | 9,557 | (2011) |
| Total under-five population (000) | 1,705 | (2011) |
| Births (000) | 416 | (2011) |
| Birth registration (%) | 3 | (2006) |
| Total under-five deaths (000) | 71 | (2011) |
| Neonatal deaths: % of all under-5 deaths | 29 | (2011) |
| Neonatal mortality rate (per 1000 live births) | 50 | (2011) |
| Infant mortality rate (per 1000 live births) | 108 | (2011) |
| Stillbirth rate (per 1000 total births) | 30 | (2009) |
| Total maternal deaths | 4,200 | (2010) |
| Lifetime risk of maternal death (1 in N) | 16 | (2010) |
| Total fertility rate (per woman) | 6.3 | (2011) |
| Adolescent birth rate (per 1000 women) | 123 | (2005) |

Under-five mortality rate

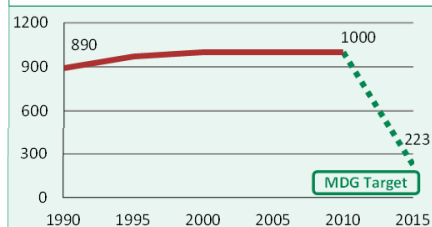
Deaths per 1000 live births



Source: IGME 2012

Maternal mortality ratio

Deaths per 100,000 live births

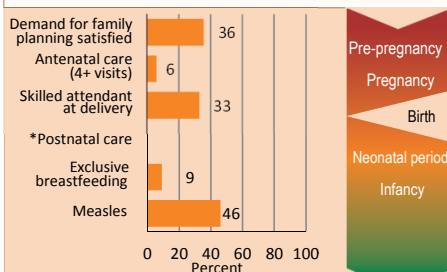


Source: MMEIG 2012

Note: MDG target calculated by Countdown to 2015.

MATERNAL AND NEWBORN HEALTH

Coverage along the continuum of care

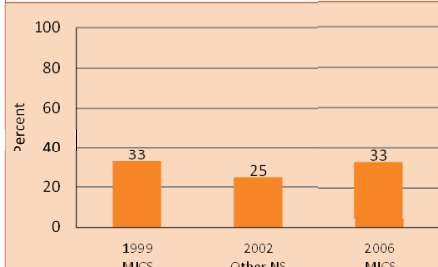


Source: DHS, MICS, Other NS

* See Annex/website for indicator definition

Skilled attendant at delivery

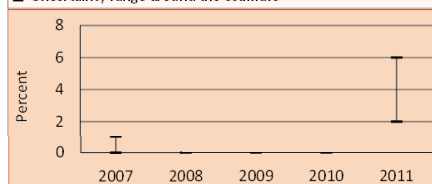
Percent live births attended by skilled health personnel



Prevention of mother-to-child transmission of HIV

Eligible HIV+ pregnant women receiving ART for their own health (% of total ARVs)

■ Percent HIV+ pregnant women receiving ARVs for PMTCT
■ Uncertainty range around the estimate

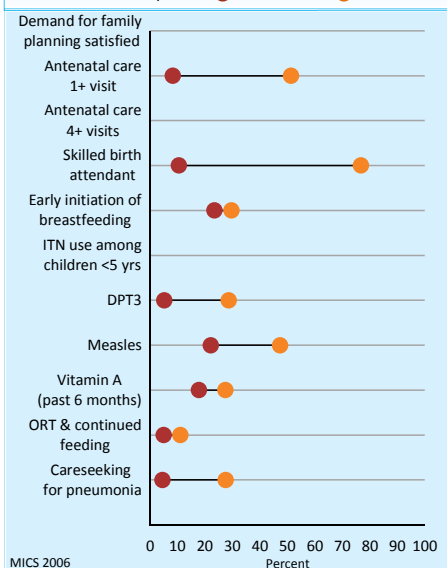


Source: UNICEF/UNAIDS/WHO

EQUITY

Socioeconomic inequities in coverage

Household wealth quintile: ● Poorest 20% ● Richest 20%



MICS 2006

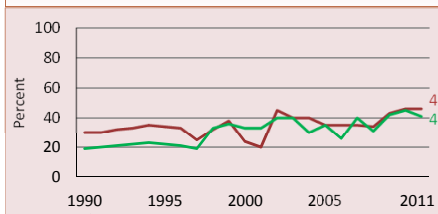
Coverage levels are shown for the poorest 20% (red circles) and the richest 20% (orange circles). The longer the line between the two groups, the greater the inequality. These estimates may differ from other charts due to differences in data sources.

Developed by Countdown to report on core indicators identified by the UN Commission on Information and Accountability, in support of the Global Strategy for Women's and Children's Health

CHILD HEALTH

Immunization

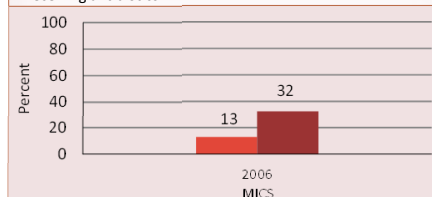
■ Percent of children immunized against measles
■ Percent of children immunized with 3 doses DTP
■ Percent of children immunized with 3 doses Hib



Source: WHO/UNICEF

Pneumonia treatment

■ Percent children <5 years with suspected pneumonia taken to appropriate health provider
■ Percent children <5 years with suspected pneumonia receiving antibiotics



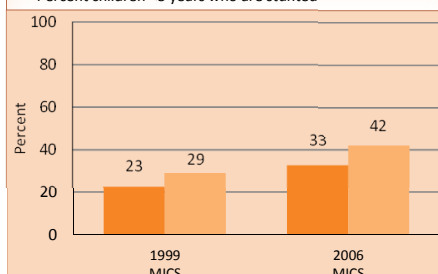
MICS

NUTRITION

Wasting prevalence (moderate and severe, %) 13 (2006)
Low birthweight incidence (moderate and severe, %) -

Underweight and stunting prevalence

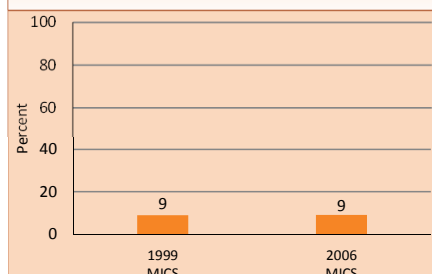
■ Percent children <5 years who are underweight
■ Percent children <5 years who are stunted



Note: Based on 2006 WHO reference population

Exclusive breastfeeding

Percent infants <6 months exclusively breastfed





Countdown to 2015

Maternal, Newborn & Child Survival

South Africa

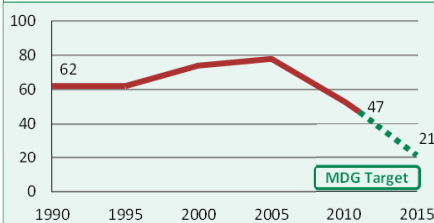
May 2013

DEMOGRAPHICS

| | | |
|--|--------|--------|
| Total population (000) | 50,460 | (2011) |
| Total under-five population (000) | 4,982 | (2011) |
| Births (000) | 1,052 | (2011) |
| Birth registration (%) | 92 | (2008) |
| Total under-five deaths (000) | 47 | (2011) |
| Neonatal deaths: % of all under-5 deaths | 43 | (2011) |
| Neonatal mortality rate (per 1000 live births) | 19 | (2011) |
| Infant mortality rate (per 1000 live births) | 35 | (2011) |
| Stillbirth rate (per 1000 total births) | 20 | (2009) |
| Total maternal deaths | 3,200 | (2010) |
| Lifetime risk of maternal death (1 in N) | 140 | (2010) |
| Total fertility rate (per woman) | 2.4 | (2011) |
| Adolescent birth rate (per 1000 women) | 54 | (2007) |

Under-five mortality rate

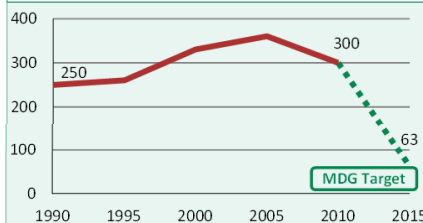
Deaths per 1000 live births



Source: IGME 2012

Maternal mortality ratio

Deaths per 100,000 live births

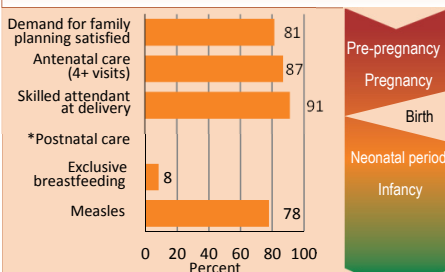


Source: MMEIG 2012

Note: MDG target calculated by Countdown to 2015.

MATERNAL AND NEWBORN HEALTH

Coverage along the continuum of care

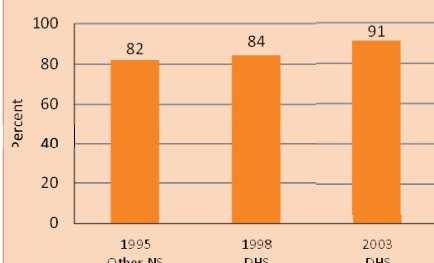


Source: DHS, MICS, Other NS

* See Annex/website for indicator definition

Skilled attendant at delivery

Percent live births attended by skilled health personnel

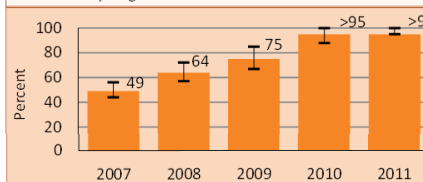


Source: DHS

Prevention of mother-to-child transmission of HIV

Eligible HIV+ pregnant women receiving ART for their own health (% of total ARVs)

■ Percent HIV+ pregnant women receiving ARVs for PMTCT
■ Uncertainty range around the estimate

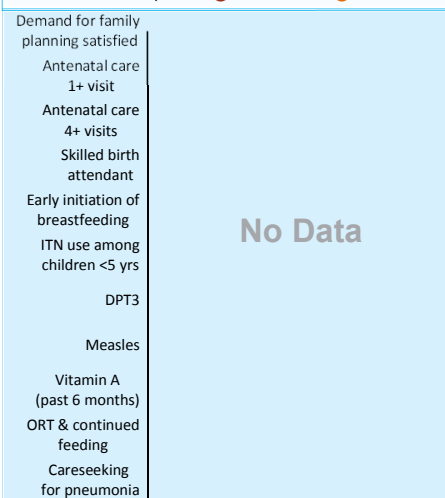


Source: UNICEF/UNAIDS/WHO

EQUITY

Socioeconomic inequities in coverage

Household wealth quintile: ● Poorest 20% ● Richest 20%



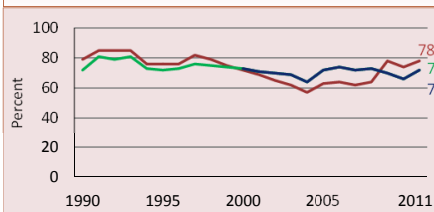
Coverage levels are shown for the poorest 20% (red circles) and the richest 20% (orange circles). The longer the line between the two groups, the greater the inequality. These estimates may differ from other charts due to differences in data sources.

Developed by Countdown to report on core indicators identified by the UN Commission on Information and Accountability, in support of the Global Strategy for Women's and Children's Health

CHILD HEALTH

Immunization

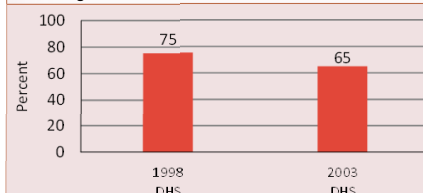
■ Percent of children immunized against measles
■ Percent of children immunized with 3 doses DTP
■ Percent of children immunized with 3 doses Hib



Source: WHO/UNICEF

Pneumonia treatment

■ Percent children <5 years with suspected pneumonia taken to appropriate health provider
■ Percent children <5 years with suspected pneumonia receiving antibiotics



NUTRITION

Wasting prevalence (moderate and severe, %) 5 (2003)

Low birthweight incidence (moderate and severe, %) -

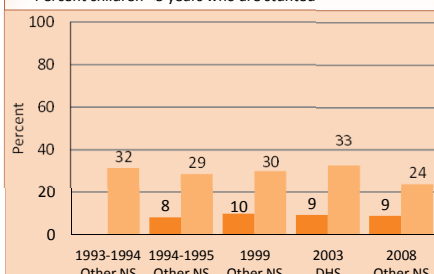
Early initiation of breastfeeding (within 1 hr of birth, %) 61 (2003)

Introduction of solid, semi-solid/soft foods (%) 49 (2003)

Vitamin A two dose coverage (%) 44 (2011)

Underweight and stunting prevalence

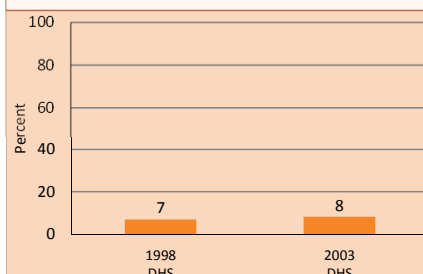
■ Percent children <5 years who are underweight
■ Percent children <5 years who are stunted



Note: Based on 2006 WHO reference population

Exclusive breastfeeding

Percent infants <6 months exclusively breastfed





Countdown to 2015

Maternal, Newborn & Child Survival

South Sudan

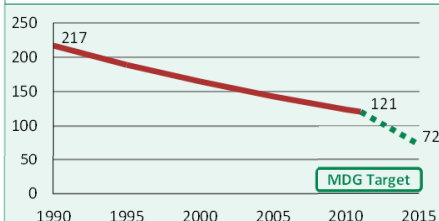
May 2013

DEMOGRAPHICS

| | | |
|--|--------|--------|
| Total population (000) | 10,314 | (2011) |
| Total under-five population (000) | - | - |
| Births (000) | - | - |
| Birth registration (%) | 35 | (2010) |
| Total under-five deaths (000) | 43 | (2011) |
| Neonatal deaths: % of all under-5 deaths | 29 | (2011) |
| Neonatal mortality rate (per 1000 live births) | 38 | (2011) |
| Infant mortality rate (per 1000 live births) | 76 | (2011) |
| Stillbirth rate (per 1000 total births) | - | - |
| Total maternal deaths | - | - |
| Lifetime risk of maternal death (1 in N) | - | - |
| Total fertility rate (per woman) | - | - |
| Adolescent birth rate (per 1000 women) | - | - |

Under-five mortality rate

Deaths per 1000 live births



Source: IGME 2012

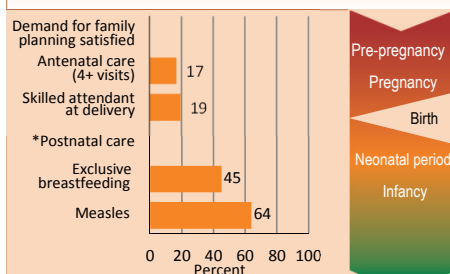
Maternal mortality ratio

Deaths per 100,000 live births

No Data

MATERNAL AND NEWBORN HEALTH

Coverage along the continuum of care

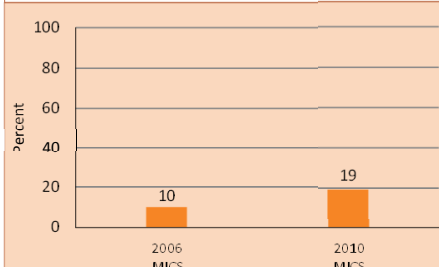


Source: DHS, MICS, Other NS

* See Annex/website for indicator definition

Skilled attendant at delivery

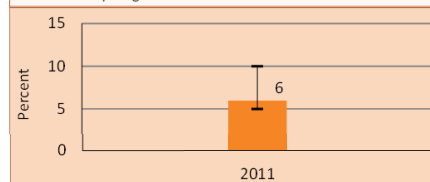
Percent live births attended by skilled health personnel



Prevention of mother-to-child transmission of HIV

Eligible HIV+ pregnant women receiving ART for their own health (% of total ARVs)

■ Percent HIV+ pregnant women receiving ARVs for PMTCT
■ Uncertainty range around the estimate

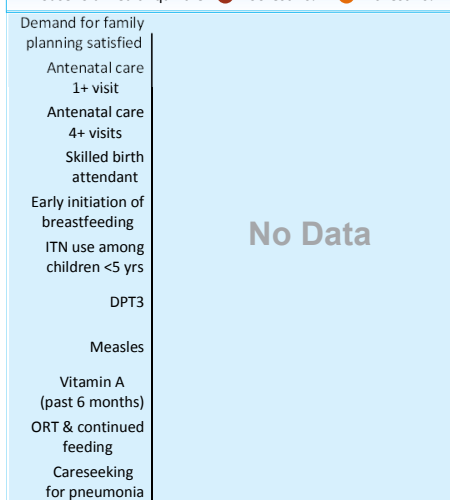


Source: UNICEF/UNAIDS/WHO

EQUITY

Socioeconomic inequities in coverage

Household wealth quintile: ● Poorest 20% ● Richest 20%



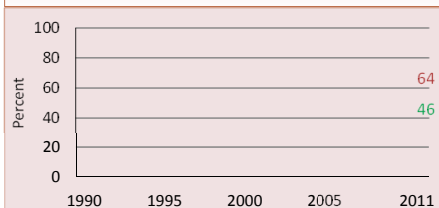
Coverage levels are shown for the poorest 20% (red circles) and the richest 20% (orange circles). The longer the line between the two groups, the greater the inequality. These estimates may differ from other charts due to differences in data sources.

Developed by Countdown to report on core indicators identified by the UN Commission on Information and Accountability, in support of the Global Strategy for Women's and Children's Health

CHILD HEALTH

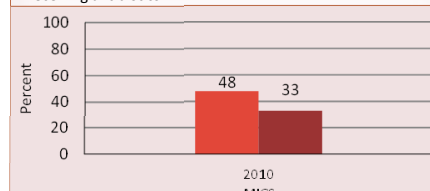
Immunization

■ Percent of children immunized against measles
■ Percent of children immunized with 3 doses DTP
■ Percent of children immunized with 3 doses Hib



Pneumonia treatment

■ Percent children <5 years with suspected pneumonia taken to appropriate health provider
■ Percent children <5 years with suspected pneumonia receiving antibiotics



NUTRITION

Wasting prevalence (moderate and severe, %) 23 (2010)

Low birthweight incidence (moderate and severe, %) -

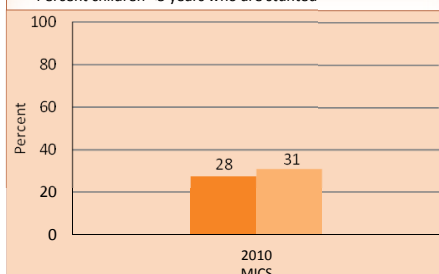
Early initiation of breastfeeding (within 1 hr of birth, %) -

Introduction of solid, semi-solid/soft foods (%) 21 (2010)

Vitamin A two dose coverage (%) -

Underweight and stunting prevalence

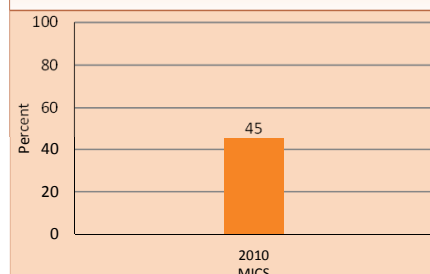
■ Percent children <5 years who are underweight
■ Percent children <5 years who are stunted



Note: Based on 2006 WHO reference population

Exclusive breastfeeding

Percent infants <6 months exclusively breastfed





Countdown to 2015

Maternal, Newborn & Child Survival

Sudan

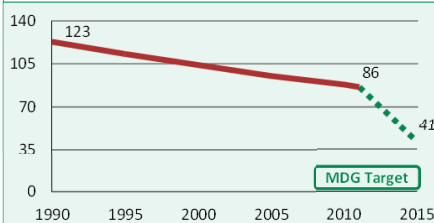
May 2013

DEMOGRAPHICS

| | | |
|--|--------|--------|
| Total population (000) | 34,318 | (2011) |
| Total under-five population (000) | - | - |
| Births (000) | - | - |
| Birth registration (%) | 59 | (2010) |
| Total under-five deaths (000) | 95 | (2011) |
| Neonatal deaths: % of all under-5 deaths | 37 | (2011) |
| Neonatal mortality rate (per 1000 live births) | 31 | (2011) |
| Infant mortality rate (per 1000 live births) | 57 | (2011) |
| Stillbirth rate (per 1000 total births) | - | - |
| Total maternal deaths | - | - |
| Lifetime risk of maternal death (1 in N) | - | - |
| Total fertility rate (per woman) | - | - |
| Adolescent birth rate (per 1000 women) | - | - |

Under-five mortality rate

Deaths per 1000 live births



Source: IGME 2012

Maternal mortality ratio

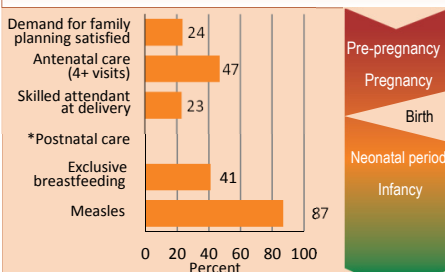
Deaths per 100,000 live births

No Data

Note: MDG target calculated by Countdown to 2015.

MATERNAL AND NEWBORN HEALTH

Coverage along the continuum of care

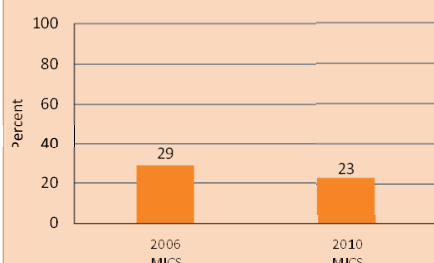


Source: DHS, MICS, Other NS

* See Annex/website for indicator definition

Skilled attendant at delivery

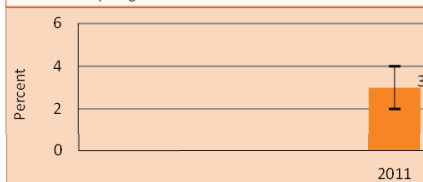
Percent live births attended by skilled health personnel



Prevention of mother-to-child transmission of HIV

Eligible HIV+ pregnant women receiving ART for their own health (% of total ARVs)

■ Percent HIV+ pregnant women receiving ARVs for PMTCT
■ Uncertainty range around the estimate

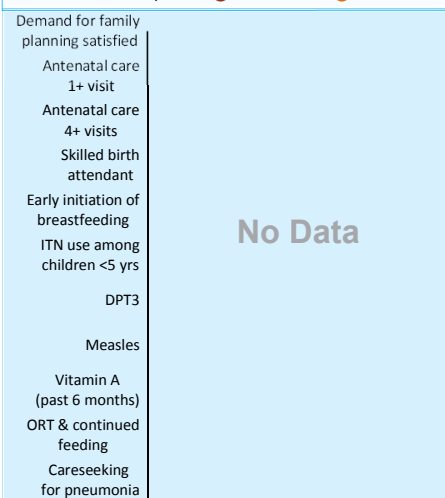


Source: UNICEF/UNAIDS/WHO

EQUITY

Socioeconomic inequities in coverage

Household wealth quintile: ● Poorest 20% ● Richest 20%



No Data

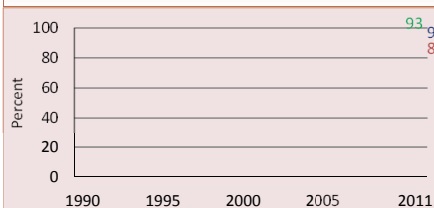
Coverage levels are shown for the poorest 20% (red circles) and the richest 20% (orange circles). The longer the line between the two groups, the greater the inequality. These estimates may differ from other charts due to differences in data sources.

Developed by Countdown to report on core indicators identified by the UN Commission on Information and Accountability, in support of the Global Strategy for Women's and Children's Health

CHILD HEALTH

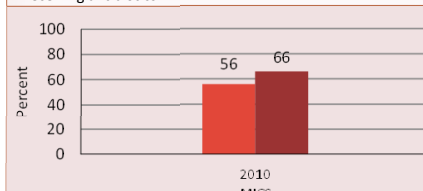
Immunization

■ Percent of children immunized against measles
■ Percent of children immunized with 3 doses DTP
■ Percent of children immunized with 3 doses Hib



Pneumonia treatment

■ Percent children <5 years with suspected pneumonia taken to appropriate health provider
■ Percent children <5 years with suspected pneumonia receiving antibiotics



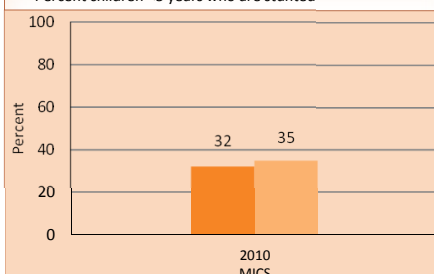
NUTRITION

Wasting prevalence (moderate and severe, %) 16 (2010)
Low birthweight incidence (moderate and severe, %) -

Early initiation of breastfeeding (within 1 hr of birth, %) -
Introduction of solid, semi-solid/soft foods (%) 51 (2010)
Vitamin A two dose coverage (%) -

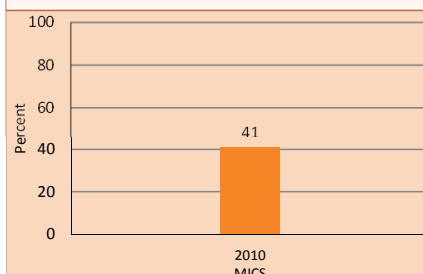
Underweight and stunting prevalence

■ Percent children <5 years who are underweight
■ Percent children <5 years who are stunted



Exclusive breastfeeding

Percent infants <6 months exclusively breastfed



Note: Based on 2006 WHO reference population



Countdown to 2015

Maternal, Newborn & Child Survival

Swaziland

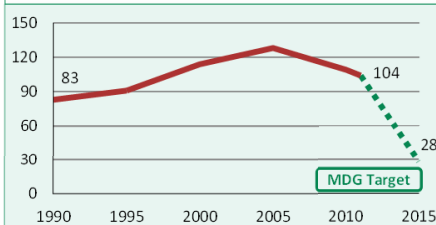
May 2013

DEMOGRAPHICS

| | | |
|--|-------|--------|
| Total population (000) | 1,203 | (2011) |
| Total under-five population (000) | 158 | (2011) |
| Births (000) | 35 | (2011) |
| Birth registration (%) | 50 | (2010) |
| Total under-five deaths (000) | 4 | (2011) |
| Neonatal deaths: % of all under-5 deaths | 34 | (2011) |
| Neonatal mortality rate (per 1000 live births) | 35 | (2011) |
| Infant mortality rate (per 1000 live births) | 69 | (2011) |
| Stillbirth rate (per 1000 total births) | 18 | (2009) |
| Total maternal deaths | 110 | (2010) |
| Lifetime risk of maternal death (1 in N) | 95 | (2011) |
| Total fertility rate (per woman) | 3.3 | (2011) |
| Adolescent birth rate (per 1000 women) | 111 | (2004) |

Under-five mortality rate

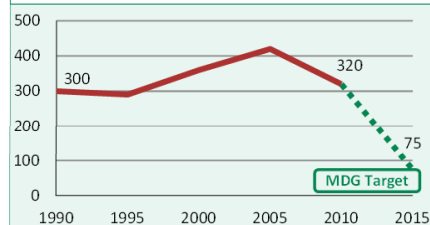
Deaths per 1000 live births



Source: IGME 2012

Maternal mortality ratio

Deaths per 100,000 live births

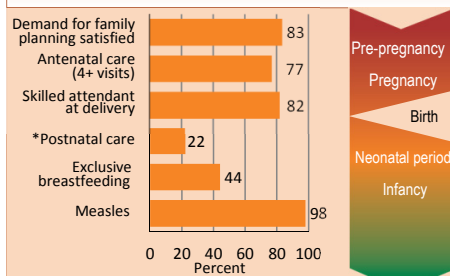


Source: MMEIG 2012

Note: MDG target calculated by Countdown to 2015.

MATERNAL AND NEWBORN HEALTH

Coverage along the continuum of care

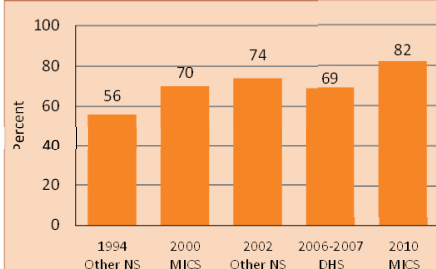


Source: DHS, MICS, Other NS

* See Annex/website for indicator definition

Skilled attendant at delivery

Percent live births attended by skilled health personnel

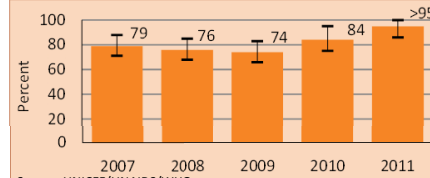


Source: DHS, MICS, Other NS

Prevention of mother-to-child transmission of HIV

Eligible HIV+ pregnant women receiving ART for their own health (% of total ARVs)

■ Percent HIV+ pregnant women receiving ARVs for PMTCT
■ Uncertainty range around the estimate

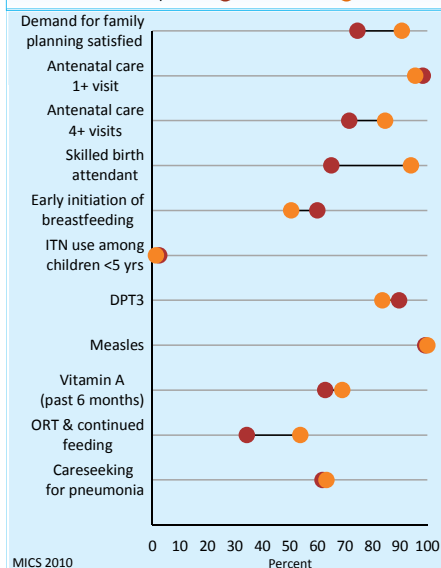


Source: UNICEF/UNAIDS/WHO

EQUITY

Socioeconomic inequities in coverage

Household wealth quintile: ● Poorest 20% ● Richest 20%



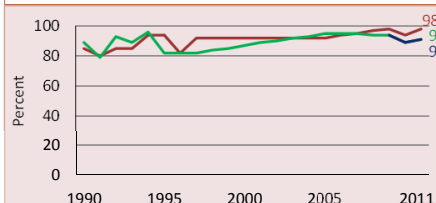
MICS 2010

Coverage levels are shown for the poorest 20% (red circles) and the richest 20% (orange circles). The longer the line between the two groups, the greater the inequality. These estimates may differ from other charts due to differences in data sources.

CHILD HEALTH

Immunization

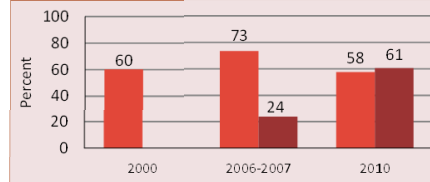
■ Percent of children immunized against measles
■ Percent of children immunized with 3 doses DTP
■ Percent of children immunized with 3 doses Hib



Source: WHO/UNICEF

Pneumonia treatment

■ Percent children <5 years with suspected pneumonia taken to appropriate health provider
■ Percent children <5 years with suspected pneumonia receiving antibiotics



NUTRITION

Wasting prevalence (moderate and severe, %) 1 (2010)

Low birthweight incidence (moderate and severe, %) 9 (2010)

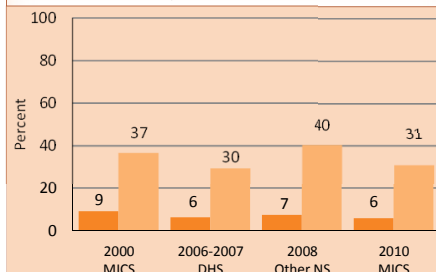
Early initiation of breastfeeding (within 1 hr of birth, %) 55 (2010)

Introduction of solid, semi-solid/soft foods (%) 66 (2010)

Vitamin A two dose coverage (%) 41 (2011)

Underweight and stunting prevalence

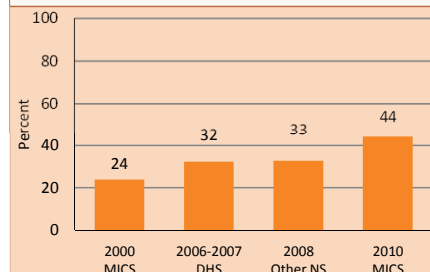
■ Percent children <5 years who are underweight
■ Percent children <5 years who are stunted



Note: Based on 2006 WHO reference population

Exclusive breastfeeding

Percent infants <6 months exclusively breastfed



Developed by Countdown to report on core indicators identified by the UN Commission on Information and Accountability, in support of the Global Strategy for Women's and Children's Health



Countdown to 2015

Maternal, Newborn & Child Survival

Tajikistan

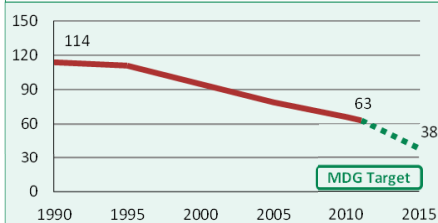
May 2013

DEMOGRAPHICS

| | | |
|--|-------|--------|
| Total population (000) | 6,977 | (2011) |
| Total under-five population (000) | 883 | (2011) |
| Births (000) | 194 | (2011) |
| Birth registration (%) | 88 | (2005) |
| Total under-five deaths (000) | 12 | (2011) |
| Neonatal deaths: % of all under-5 deaths | 40 | (2011) |
| Neonatal mortality rate (per 1000 live births) | 25 | (2011) |
| Infant mortality rate (per 1000 live births) | 53 | (2011) |
| Stillbirth rate (per 1000 total births) | 12 | (2009) |
| Total maternal deaths | 130 | (2010) |
| Lifetime risk of maternal death (1 in N) | 430 | (2010) |
| Total fertility rate (per woman) | 3.2 | (2011) |
| Adolescent birth rate (per 1000 women) | 27 | (2005) |

Under-five mortality rate

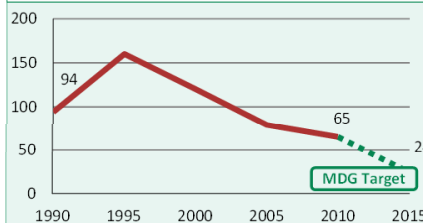
Deaths per 1000 live births



Source: IGME 2012

Maternal mortality ratio

Deaths per 100,000 live births

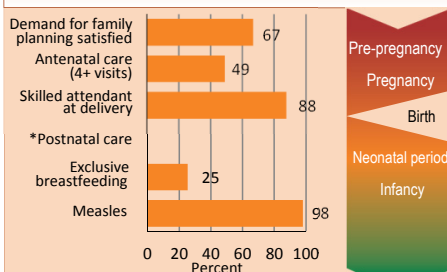


Source: MMEIG 2012

Note: MDG target calculated by Countdown to 2015.

MATERNAL AND NEWBORN HEALTH

Coverage along the continuum of care

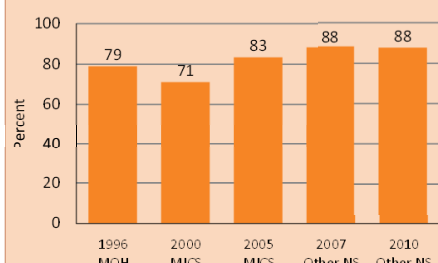


Source: DHS, MICS, Other NS

* See Annex/website for indicator definition

Skilled attendant at delivery

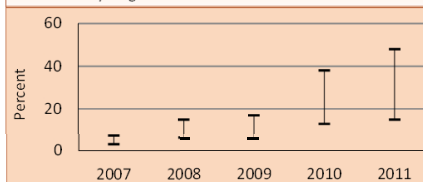
Percent live births attended by skilled health personnel



Prevention of mother-to-child transmission of HIV

Eligible HIV+ pregnant women receiving ART for their own health (% of total ARVs)

■ Percent HIV+ pregnant women receiving ARVs for PMTCT
■ Uncertainty range around the estimate

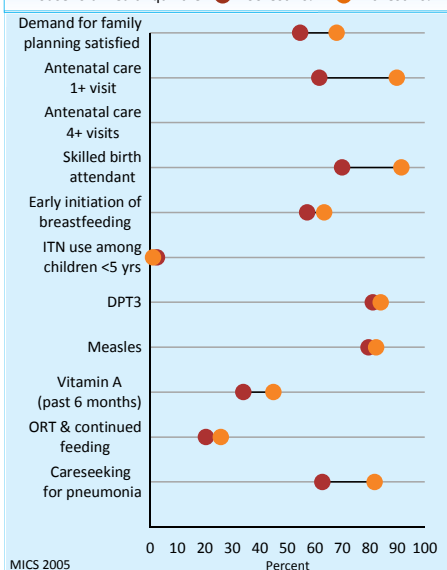


Source: UNICEF/UNAIDS/WHO

EQUITY

Socioeconomic inequities in coverage

Household wealth quintile: ● Poorest 20% ● Richest 20%



MICS 2005

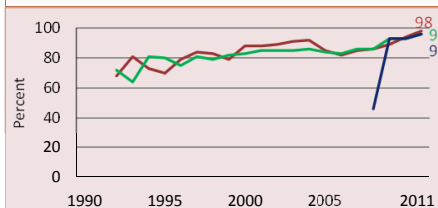
Coverage levels are shown for the poorest 20% (red circles) and the richest 20% (orange circles). The longer the line between the two groups, the greater the inequality. These estimates may differ from other charts due to differences in data sources.

Developed by Countdown to report on core indicators identified by the UN Commission on Information and Accountability, in support of the Global Strategy for Women's and Children's Health

CHILD HEALTH

Immunization

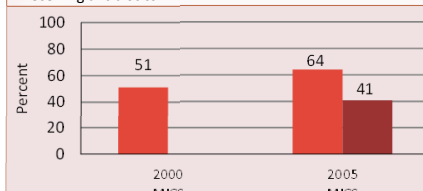
■ Percent of children immunized against measles
■ Percent of children immunized with 3 doses DTP
■ Percent of children immunized with 3 doses Hib



Source: WHO/UNICEF

Pneumonia treatment

■ Percent children <5 years with suspected pneumonia taken to appropriate health provider
■ Percent children <5 years with suspected pneumonia receiving antibiotics



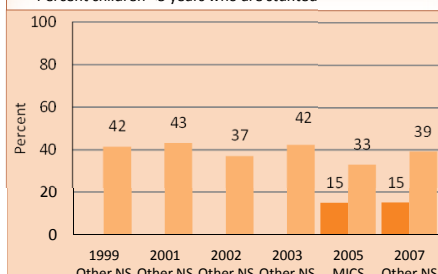
NUTRITION

Wasting prevalence (moderate and severe, %) 7 (2007)

Low birthweight incidence (moderate and severe, %) 10 (2005)

Underweight and stunting prevalence

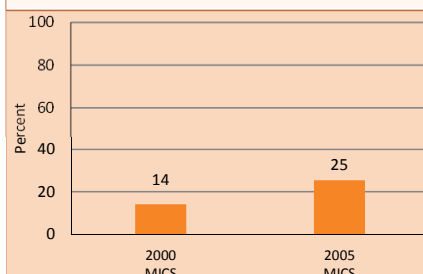
■ Percent children <5 years who are underweight
■ Percent children <5 years who are stunted



Note: Based on 2006 WHO reference population

Exclusive breastfeeding

Percent infants <6 months exclusively breastfed





Countdown to 2015

Maternal, Newborn & Child Survival

Tanzania, United Republic of

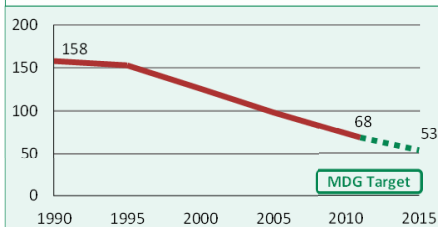
May 2013

DEMOGRAPHICS

| | | |
|--|--------|--------|
| Total population (000) | 46,218 | (2011) |
| Total under-five population (000) | 8,273 | (2011) |
| Births (000) | 1,913 | (2011) |
| Birth registration (%) | 16 | (2010) |
| Total under-five deaths (000) | 122 | (2011) |
| Neonatal deaths: % of all under-5 deaths | 40 | (2011) |
| Neonatal mortality rate (per 1000 live births) | 25 | (2011) |
| Infant mortality rate (per 1000 live births) | 45 | (2011) |
| Stillbirth rate (per 1000 total births) | 26 | (2009) |
| Total maternal deaths | 8,500 | (2010) |
| Lifetime risk of maternal death (1 in N) | 38 | (2010) |
| Total fertility rate (per woman) | 5.5 | (2011) |
| Adolescent birth rate (per 1000 women) | 128 | (2007) |

Under-five mortality rate

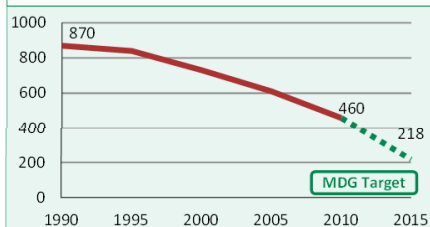
Deaths per 1000 live births



Source: IGME 2012

Maternal mortality ratio

Deaths per 100,000 live births

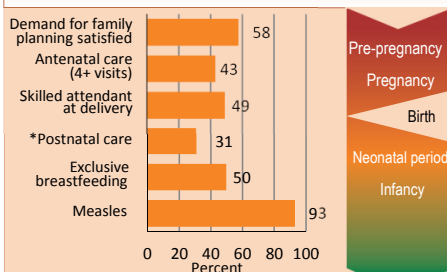


Source: MMEIG 2012

Note: MDG target calculated by Countdown to 2015.

MATERNAL AND NEWBORN HEALTH

Coverage along the continuum of care

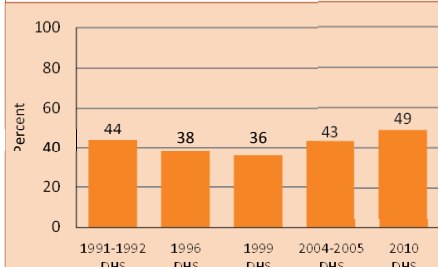


Source: DHS, MICS, Other NS

* See Annex/website for indicator definition

Skilled attendant at delivery

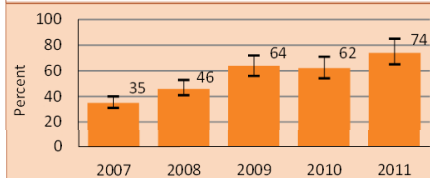
Percent live births attended by skilled health personnel



Prevention of mother-to-child transmission of HIV

Eligible HIV+ pregnant women receiving ART for their own health (% of total ARVs)

■ Percent HIV+ pregnant women receiving ARVs for PMTCT
■ Uncertainty range around the estimate

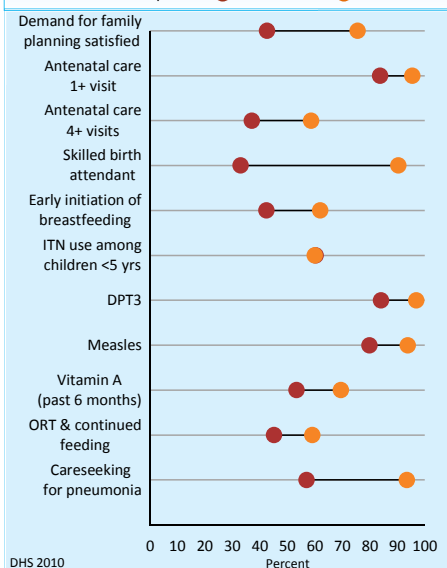


Source: UNICEF/UNAIDS/WHO

EQUITY

Socioeconomic inequities in coverage

Household wealth quintile: ● Poorest 20% ● Richest 20%



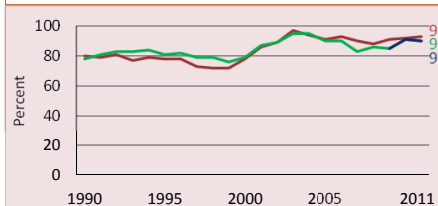
DHS 2010

Coverage levels are shown for the poorest 20% (red circles) and the richest 20% (orange circles). The longer the line between the two groups, the greater the inequality. These estimates may differ from other charts due to differences in data sources.

CHILD HEALTH

Immunization

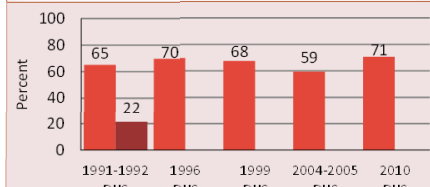
■ Percent of children immunized against measles
■ Percent of children immunized with 3 doses DTP
■ Percent of children immunized with 3 doses Hib



Source: WHO/UNICEF

Pneumonia treatment

■ Percent children <5 years with suspected pneumonia taken to appropriate health provider
■ Percent children <5 years with suspected pneumonia receiving antibiotics

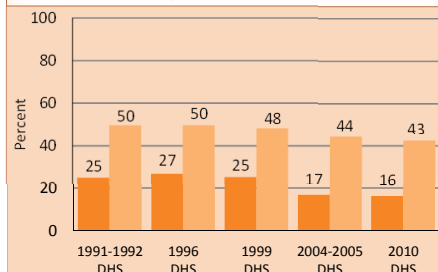


NUTRITION

Wasting prevalence (moderate and severe, %) 5 (2010)
Low birthweight incidence (moderate and severe, %) 8 (2010)

Underweight and stunting prevalence

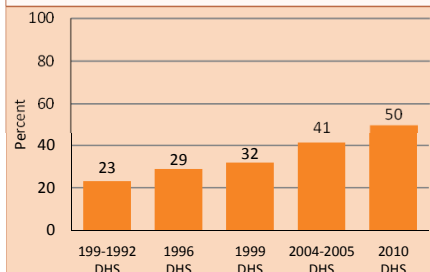
■ Percent children <5 years who are underweight
■ Percent children <5 years who are stunted



Note: Based on 2006 WHO reference population

Exclusive breastfeeding

Percent infants <6 months exclusively breastfed



Developed by Countdown to report on core indicators identified by the UN Commission on Information and Accountability, in support of the Global Strategy for Women's and Children's Health



Countdown to 2015

Maternal, Newborn & Child Survival

Togo

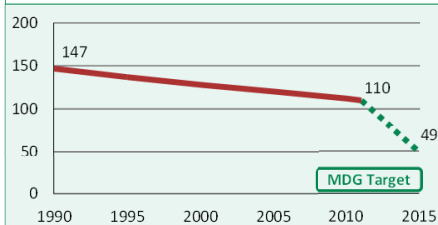
May 2013

DEMOGRAPHICS

| | | |
|--|-------|--------|
| Total population (000) | 6,155 | (2011) |
| Total under-five population (000) | 870 | (2011) |
| Births (000) | 195 | (2011) |
| Birth registration (%) | 78 | (2010) |
| Total under-five deaths (000) | 21 | (2011) |
| Neonatal deaths: % of all under-5 deaths | 33 | (2011) |
| Neonatal mortality rate (per 1000 live births) | 36 | (2011) |
| Infant mortality rate (per 1000 live births) | 73 | (2011) |
| Stillbirth rate (per 1000 total births) | 25 | (2009) |
| Total maternal deaths | 580 | (2010) |
| Lifetime risk of maternal death (1 in N) | 80 | (2010) |
| Total fertility rate (per woman) | 4.0 | (2011) |
| Adolescent birth rate (per 1000 women) | 89 | (1995) |

Under-five mortality rate

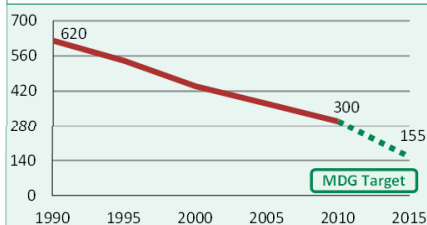
Deaths per 1000 live births



Source: IGME 2012

Maternal mortality ratio

Deaths per 100,000 live births

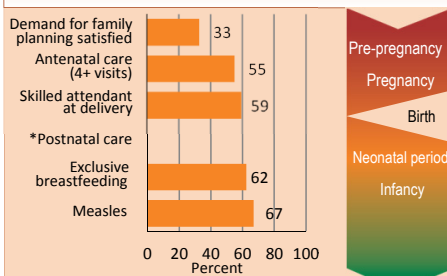


Source: MMEIG 2012

Note: MDG target calculated by Countdown to 2015.

MATERNAL AND NEWBORN HEALTH

Coverage along the continuum of care

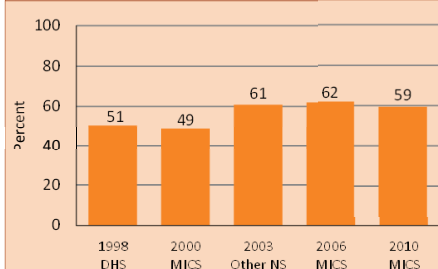


Source: DHS, MICS, Other NS

* See Annex/website for indicator definition

Skilled attendant at delivery

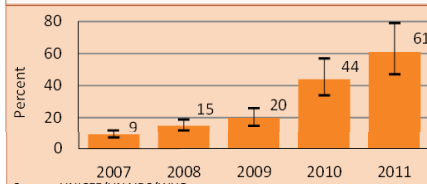
Percent live births attended by skilled health personnel



Prevention of mother-to-child transmission of HIV

Eligible HIV+ pregnant women receiving ART for their own health (% of total ARVs)

■ Percent HIV+ pregnant women receiving ARVs for PMTCT
■ Uncertainty range around the estimate

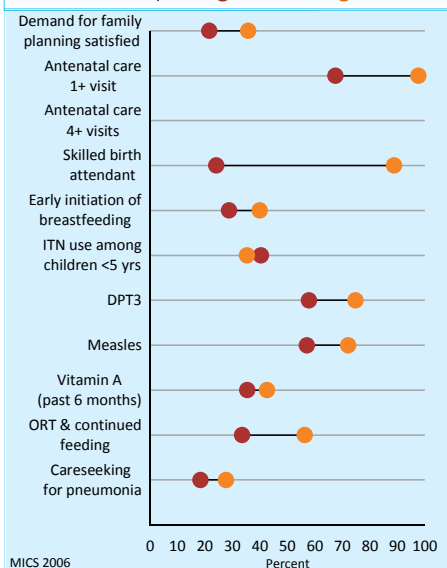


Source: UNICEF/UNAIDS/WHO

EQUITY

Socioeconomic inequities in coverage

Household wealth quintile: ● Poorest 20% ● Richest 20%



MICS 2006

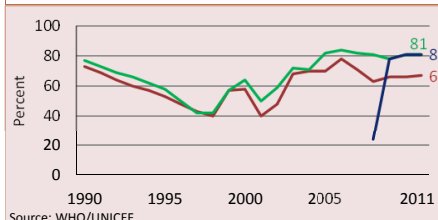
Coverage levels are shown for the poorest 20% (red circles) and the richest 20% (orange circles). The longer the line between the two groups, the greater the inequality. These estimates may differ from other charts due to differences in data sources.

Developed by Countdown to report on core indicators identified by the UN Commission on Information and Accountability, in support of the Global Strategy for Women's and Children's Health

CHILD HEALTH

Immunization

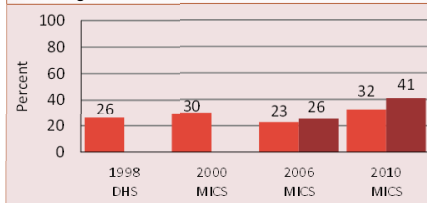
■ Percent of children immunized against measles
■ Percent of children immunized with 3 doses DTP
■ Percent of children immunized with 3 doses Hib



Source: WHO/UNICEF

Pneumonia treatment

■ Percent children <5 years with suspected pneumonia taken to appropriate health provider
■ Percent children <5 years with suspected pneumonia receiving antibiotics

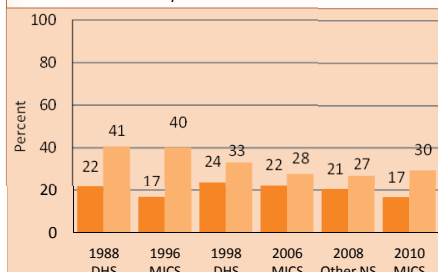


NUTRITION

Wasting prevalence (moderate and severe, %) 5 (2010)
Low birthweight incidence (moderate and severe, %) 11 (2010)

Underweight and stunting prevalence

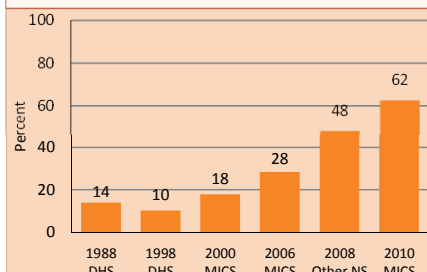
■ Percent children <5 years who are underweight
■ Percent children <5 years who are stunted



Note: Based on 2006 WHO reference population

Exclusive breastfeeding

Percent infants <6 months exclusively breastfed





Countdown to 2015

Maternal, Newborn & Child Survival

Turkmenistan

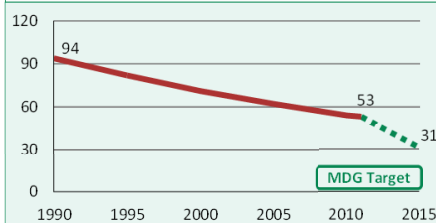
May 2013

DEMOGRAPHICS

| | | |
|--|-------|--------|
| Total population (000) | 5,105 | (2011) |
| Total under-five population (000) | 499 | (2011) |
| Births (000) | 109 | (2011) |
| Birth registration (%) | 96 | (2006) |
| Total under-five deaths (000) | 5 | (2011) |
| Neonatal deaths: % of all under-5 deaths | 44 | (2011) |
| Neonatal mortality rate (per 1000 live births) | 22 | (2011) |
| Infant mortality rate (per 1000 live births) | 45 | (2011) |
| Stillbirth rate (per 1000 total births) | 13 | (2009) |
| Total maternal deaths | 73 | (2010) |
| Lifetime risk of maternal death (1 in N) | 590 | (2010) |
| Total fertility rate (per woman) | 2.4 | (2011) |
| Adolescent birth rate (per 1000 women) | 21 | (2006) |

Under-five mortality rate

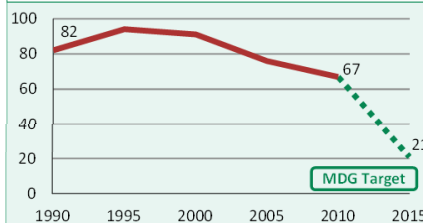
Deaths per 1000 live births



Source: IGME 2012

Maternal mortality ratio

Deaths per 100,000 live births

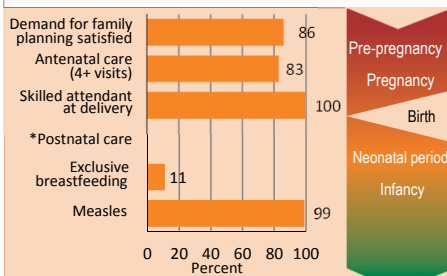


Source: MMEIG 2012

Note: MDG target calculated by Countdown to 2015.

MATERNAL AND NEWBORN HEALTH

Coverage along the continuum of care

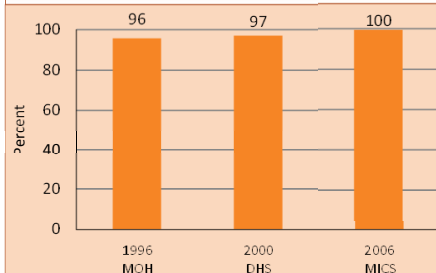


Source: DHS, MICS, Other NS

* See Annex/website for indicator definition

Skilled attendant at delivery

Percent live births attended by skilled health personnel



Prevention of mother-to-child transmission of HIV

Eligible HIV+ pregnant women receiving ART for their own health (% of total ARVs)

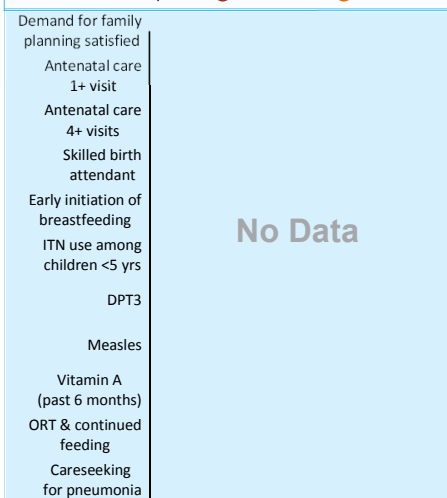
■ Percent HIV+ pregnant women receiving ARVs for PMTCT
■ Uncertainty range around the estimate

No Data

EQUITY

Socioeconomic inequities in coverage

Household wealth quintile: ● Poorest 20% ● Richest 20%



No Data

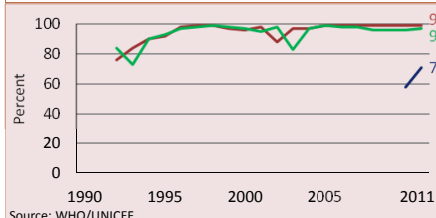
Coverage levels are shown for the poorest 20% (red circles) and the richest 20% (orange circles). The longer the line between the two groups, the greater the inequality. These estimates may differ from other charts due to differences in data sources.

Developed by Countdown to report on core indicators identified by the UN Commission on Information and Accountability, in support of the Global Strategy for Women's and Children's Health

CHILD HEALTH

Immunization

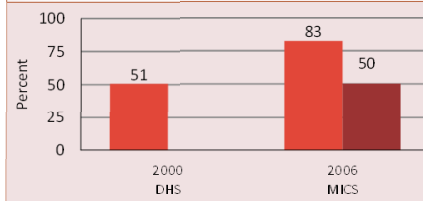
■ Percent of children immunized against measles
■ Percent of children immunized with 3 doses DTP
■ Percent of children immunized with 3 doses Hib



Source: WHO/UNICEF

Pneumonia treatment

■ Percent children <5 years with suspected pneumonia taken to appropriate health provider
■ Percent children <5 years with suspected pneumonia receiving antibiotics



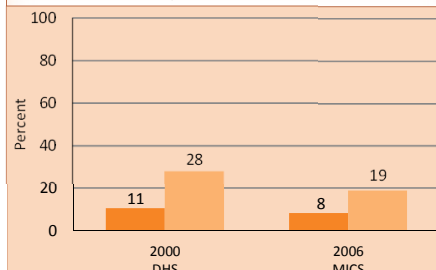
NUTRITION

Wasting prevalence (moderate and severe, %) 7 (2006)
Low birthweight incidence (moderate and severe, %) 4 (2006)

Early initiation of breastfeeding (within 1 hr of birth, %) 60 (2006)
Introduction of solid, semi-solid/soft foods (%) 54 (2005)
Vitamin A two dose coverage (%) -

Underweight and stunting prevalence

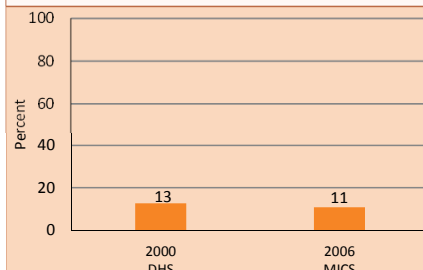
■ Percent children <5 years who are underweight
■ Percent children <5 years who are stunted



Note: Based on 2006 WHO reference population

Exclusive breastfeeding

Percent infants <6 months exclusively breastfed





Countdown to 2015

Maternal, Newborn & Child Survival

Uganda

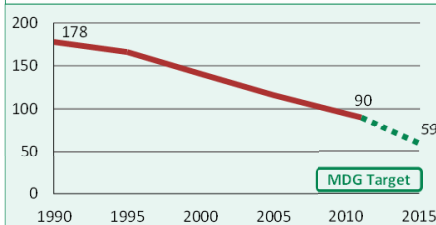
May 2013

DEMOGRAPHICS

| | | |
|--|--------|--------|
| Total population (000) | 34,509 | (2011) |
| Total under-five population (000) | 6,643 | (2011) |
| Births (000) | 1,545 | (2011) |
| Birth registration (%) | 30 | (2011) |
| Total under-five deaths (000) | 131 | (2011) |
| Neonatal deaths: % of all under-5 deaths | 33 | (2011) |
| Neonatal mortality rate (per 1000 live births) | 28 | (2011) |
| Infant mortality rate (per 1000 live births) | 58 | (2011) |
| Stillbirth rate (per 1000 total births) | 25 | (2009) |
| Total maternal deaths | 4,700 | (2010) |
| Lifetime risk of maternal death (1 in N) | 49 | (2010) |
| Total fertility rate (per woman) | 6.1 | (2011) |
| Adolescent birth rate (per 1000 women) | 159 | (2003) |

Under-five mortality rate

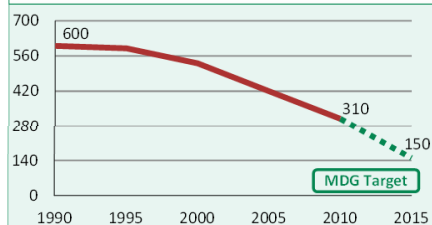
Deaths per 1000 live births



Source: IGME 2012

Maternal mortality ratio

Deaths per 100,000 live births

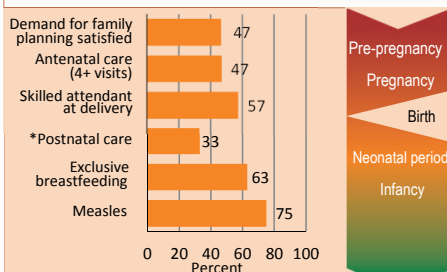


Source: MMEIG 2012

Note: MDG target calculated by Countdown to 2015.

MATERNAL AND NEWBORN HEALTH

Coverage along the continuum of care

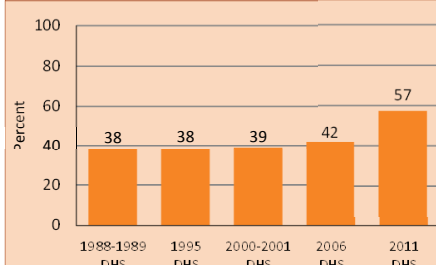


Source: DHS, MICS, Other NS

* See Annex/website for indicator definition

Skilled attendant at delivery

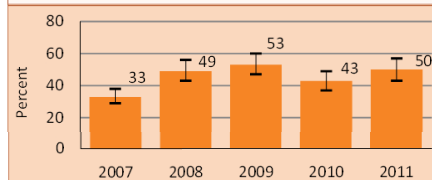
Percent live births attended by skilled health personnel



Prevention of mother-to-child transmission of HIV

Eligible HIV+ pregnant women receiving ART for their own health (% of total ARVs)

■ Percent HIV+ pregnant women receiving ARVs for PMTCT
■ Uncertainty range around the estimate

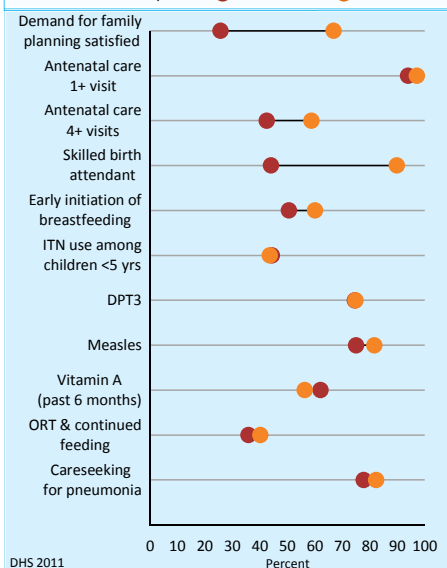


Source: UNICEF/UNAIDS/WHO

EQUITY

Socioeconomic inequities in coverage

Household wealth quintile: ● Poorest 20% ● Richest 20%



DHS 2011

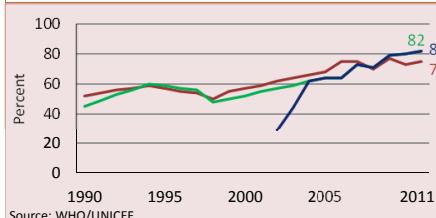
Coverage levels are shown for the poorest 20% (red circles) and the richest 20% (orange circles). The longer the line between the two groups, the greater the inequality. These estimates may differ from other charts due to differences in data sources.

Developed by Countdown to report on core indicators identified by the UN Commission on Information and Accountability, in support of the Global Strategy for Women's and Children's Health

CHILD HEALTH

Immunization

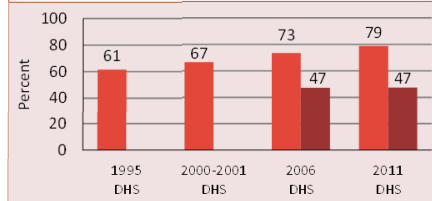
■ Percent of children immunized against measles
■ Percent of children immunized with 3 doses DTP
■ Percent of children immunized with 3 doses Hib



Source: WHO/UNICEF

Pneumonia treatment

■ Percent children <5 years with suspected pneumonia taken to appropriate health provider
■ Percent children <5 years with suspected pneumonia receiving antibiotics

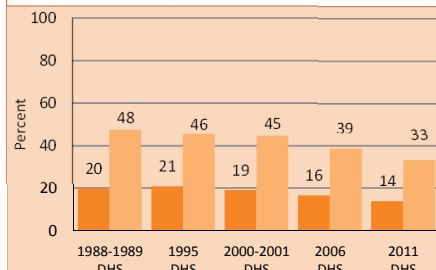


NUTRITION

Wasting prevalence (moderate and severe, %) 5 (2011)
Low birthweight incidence (moderate and severe, %) 14 (2006)

Underweight and stunting prevalence

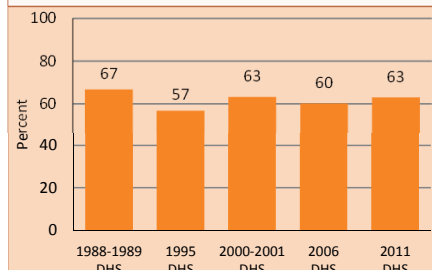
■ Percent children <5 years who are underweight
■ Percent children <5 years who are stunted



Note: Based on 2006 WHO reference population

Exclusive breastfeeding

Percent infants <6 months exclusively breastfed





Countdown to 2015

Maternal, Newborn & Child Survival

Uzbekistan

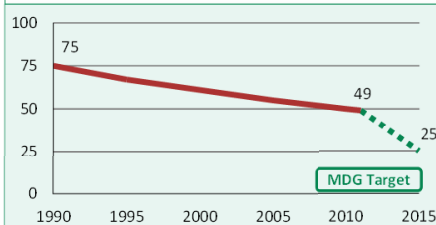
May 2013

DEMOGRAPHICS

| | | |
|--|--------|--------|
| Total population (000) | 27,760 | (2011) |
| Total under-five population (000) | 2,806 | (2011) |
| Births (000) | 589 | (2011) |
| Birth registration (%) | 100 | (2009) |
| Total under-five deaths (000) | 30 | (2011) |
| Neonatal deaths: % of all under-5 deaths | 30 | (2011) |
| Neonatal mortality rate (per 1000 live births) | 15 | (2011) |
| Infant mortality rate (per 1000 live births) | 42 | (2011) |
| Stillbirth rate (per 1000 total births) | 6 | (2009) |
| Total maternal deaths | 160 | (2010) |
| Lifetime risk of maternal death (1 in N) | 1,400 | (2010) |
| Total fertility rate (per woman) | 2.3 | (2011) |
| Adolescent birth rate (per 1000 women) | 26 | (2006) |

Under-five mortality rate

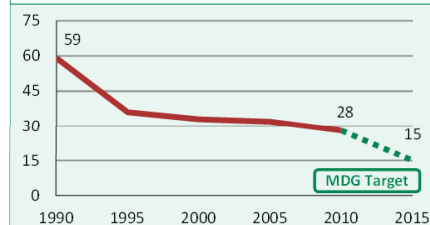
Deaths per 1000 live births



Source: IGME 2012

Maternal mortality ratio

Deaths per 100,000 live births

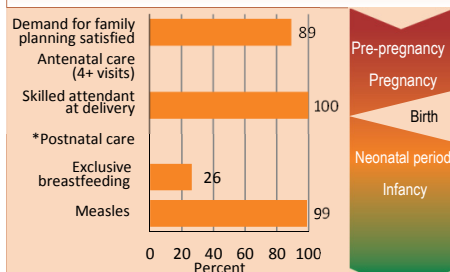


Source: MMEIG 2012

Note: MDG target calculated by Countdown to 2015.

MATERNAL AND NEWBORN HEALTH

Coverage along the continuum of care

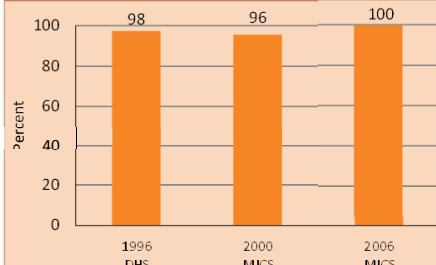


Source: DHS, MICS, Other NS

* See Annex/website for indicator definition

Skilled attendant at delivery

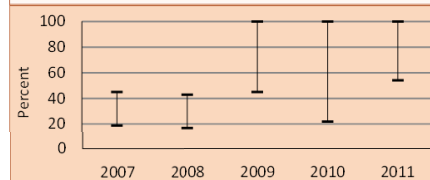
Percent live births attended by skilled health personnel



Prevention of mother-to-child transmission of HIV

Eligible HIV+ pregnant women receiving ART for their own health (% of total ARVs)

■ Percent HIV+ pregnant women receiving ARVs for PMTCT
■ Uncertainty range around the estimate

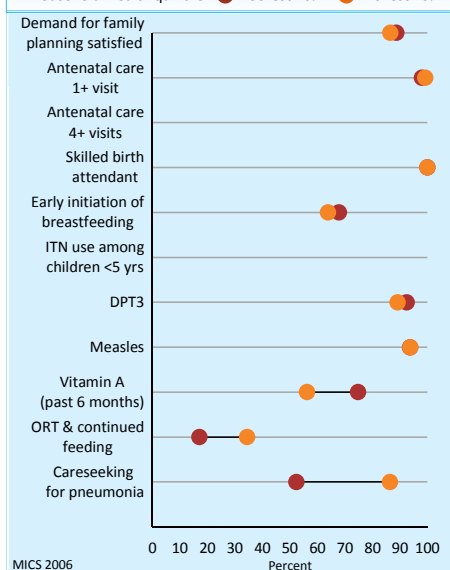


Source: UNICEF/UNAIDS/WHO

EQUITY

Socioeconomic inequities in coverage

Household wealth quintile: ● Poorest 20% ● Richest 20%



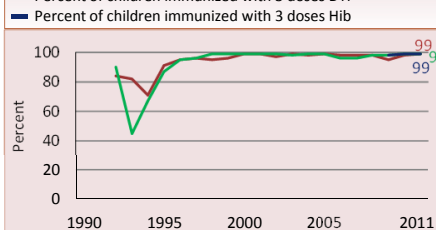
Coverage levels are shown for the poorest 20% (red circles) and the richest 20% (orange circles). The longer the line between the two groups, the greater the inequality. These estimates may differ from other charts due to differences in data sources.

Developed by Countdown to report on core indicators identified by the UN Commission on Information and Accountability, in support of the Global Strategy for Women's and Children's Health

CHILD HEALTH

Immunization

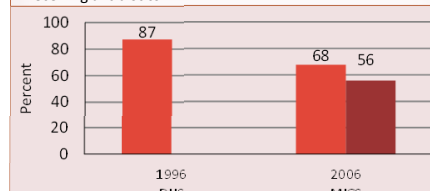
■ Percent of children immunized against measles
■ Percent of children immunized with 3 doses DTP
■ Percent of children immunized with 3 doses Hib



Source: WHO/UNICEF

Pneumonia treatment

■ Percent children <5 years with suspected pneumonia taken to appropriate health provider
■ Percent children <5 years with suspected pneumonia receiving antibiotics



NUTRITION

Wasting prevalence (moderate and severe, %) 4 (2006)

Low birthweight incidence (moderate and severe, %) 5 (2006)

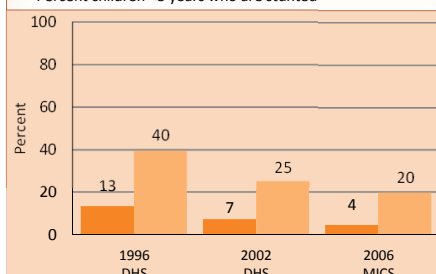
Early initiation of breastfeeding (within 1 hr of birth, %) 67 (2006)

Introduction of solid, semi-solid/soft foods (%) 47 (2006)

Vitamin A two dose coverage (%) 95 (2011)

Underweight and stunting prevalence

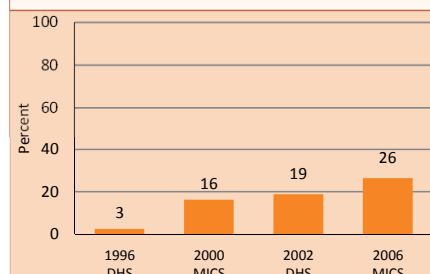
■ Percent children <5 years who are underweight
■ Percent children <5 years who are stunted



Note: Based on 2006 WHO reference population

Exclusive breastfeeding

Percent infants <6 months exclusively breastfed





Countdown to 2015

Maternal, Newborn & Child Survival

Vietnam

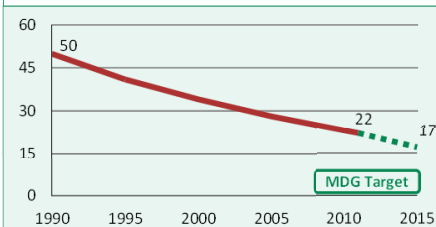
May 2013

DEMOGRAPHICS

| | | |
|--|--------|--------|
| Total population (000) | 88,792 | (2011) |
| Total under-five population (000) | 7,202 | (2011) |
| Births (000) | 1,458 | (2011) |
| Birth registration (%) | 95 | (2011) |
| Total under-five deaths (000) | 32 | (2011) |
| Neonatal deaths: % of all under-5 deaths | 55 | (2011) |
| Neonatal mortality rate (per 1000 live births) | 12 | (2011) |
| Infant mortality rate (per 1000 live births) | 17 | (2011) |
| Stillbirth rate (per 1000 total births) | 13 | (2009) |
| Total maternal deaths | 860 | (2010) |
| Lifetime risk of maternal death (1 in N) | 870 | (2010) |
| Total fertility rate (per woman) | 1.8 | (2011) |
| Adolescent birth rate (per 1000 women) | 35 | (2009) |

Under-five mortality rate

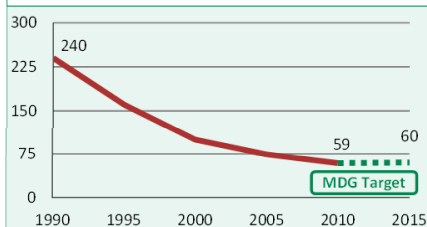
Deaths per 1000 live births



Source: IGME 2012

Maternal mortality ratio

Deaths per 100,000 live births

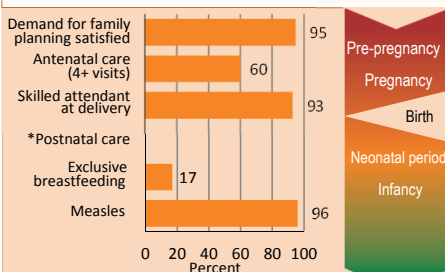


Source: MMEIG 2012

Note: MDG target calculated by Countdown to 2015.

MATERNAL AND NEWBORN HEALTH

Coverage along the continuum of care

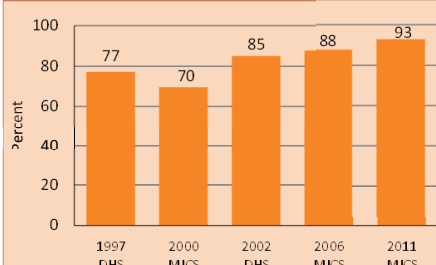


Source: DHS, MICS, Other NS

* See Annex/website for indicator definition

Skilled attendant at delivery

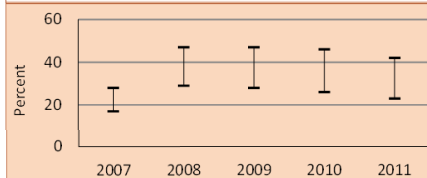
Percent live births attended by skilled health personnel



Prevention of mother-to-child transmission of HIV

Eligible HIV+ pregnant women receiving ART for their own health (% of total ARVs)

■ Percent HIV+ pregnant women receiving ARVs for PMTCT
■ Uncertainty range around the estimate

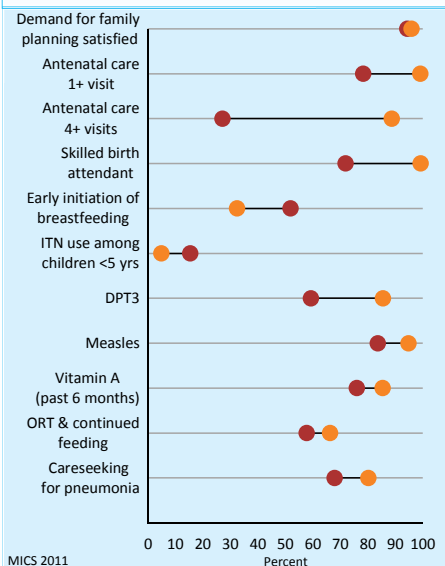


Source: UNICEF/UNAIDS/WHO

EQUITY

Socioeconomic inequities in coverage

Household wealth quintile: ● Poorest 20% ● Richest 20%



MICS 2011

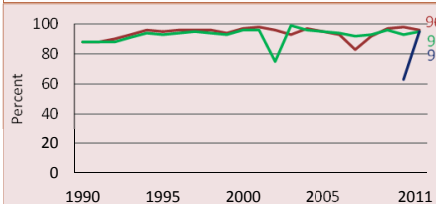
Coverage levels are shown for the poorest 20% (red circles) and the richest 20% (orange circles). The longer the line between the two groups, the greater the inequality. These estimates may differ from other charts due to differences in data sources.

Developed by Countdown to report on core indicators identified by the UN Commission on Information and Accountability, in support of the Global Strategy for Women's and Children's Health

CHILD HEALTH

Immunization

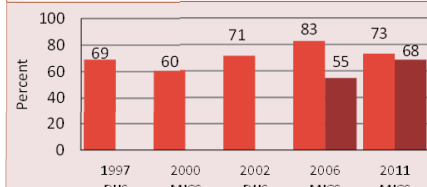
■ Percent of children immunized against measles
■ Percent of children immunized with 3 doses DTP
■ Percent of children immunized with 3 doses Hib



Source: WHO/UNICEF

Pneumonia treatment

■ Percent children <5 years with suspected pneumonia taken to appropriate health provider
■ Percent children <5 years with suspected pneumonia receiving antibiotics

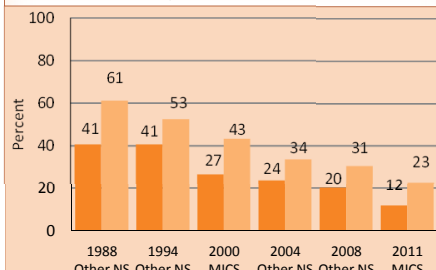


NUTRITION

Wasting prevalence (moderate and severe, %) 4 (2011)
Low birthweight incidence (moderate and severe, %) 5 (2011)

Underweight and stunting prevalence

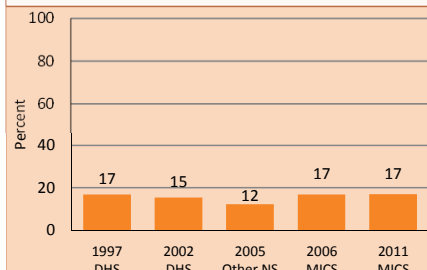
■ Percent children <5 years who are underweight
■ Percent children <5 years who are stunted



Note: Based on 2006 WHO reference population

Exclusive breastfeeding

Percent infants <6 months exclusively breastfed





Countdown to 2015

Maternal, Newborn & Child Survival

Yemen

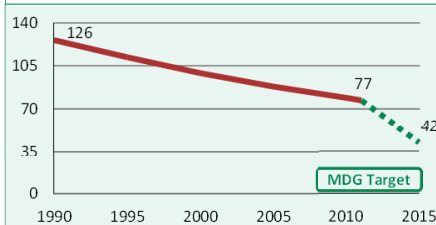
May 2013

DEMOGRAPHICS

| | | |
|--|--------|--------|
| Total population (000) | 24,800 | (2011) |
| Total under-five population (000) | 4,181 | (2011) |
| Births (000) | 940 | (2011) |
| Birth registration (%) | 22 | (2006) |
| Total under-five deaths (000) | 70 | (2011) |
| Neonatal deaths: % of all under-5 deaths | 43 | (2011) |
| Neonatal mortality rate (per 1000 live births) | 32 | (2011) |
| Infant mortality rate (per 1000 live births) | 57 | (2011) |
| Stillbirth rate (per 1000 total births) | 23 | (2009) |
| Total maternal deaths | 1,900 | (2010) |
| Lifetime risk of maternal death (1 in N) | 90 | (2010) |
| Total fertility rate (per woman) | 5.1 | (2011) |
| Adolescent birth rate (per 1000 women) | 80 | (2005) |

Under-five mortality rate

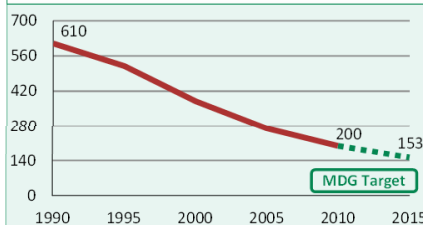
Deaths per 1000 live births



Source: IGME 2012

Maternal mortality ratio

Deaths per 100,000 live births

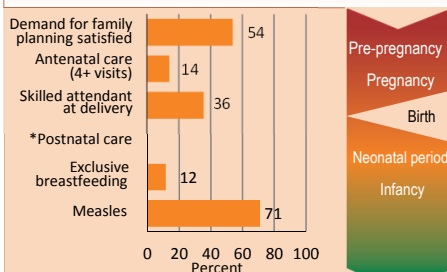


Source: MMEIG 2012

Note: MDG target calculated by Countdown to 2015.

MATERNAL AND NEWBORN HEALTH

Coverage along the continuum of care

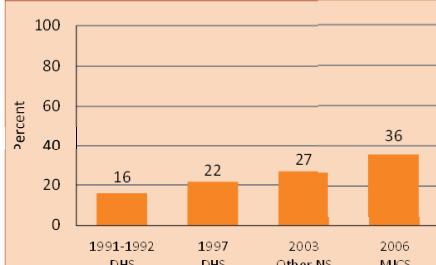


Source: DHS, MICS, Other NS

* See Annex/website for indicator definition

Skilled attendant at delivery

Percent live births attended by skilled health personnel

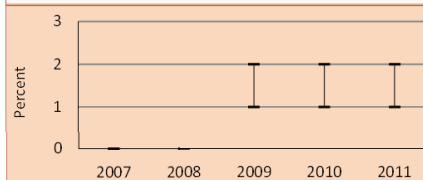


Source: DHS, MICS, Other NS

Prevention of mother-to-child transmission of HIV

Eligible HIV+ pregnant women receiving ART for their own health (% of total ARVs)

■ Percent HIV+ pregnant women receiving ARVs for PMTCT
■ Uncertainty range around the estimate

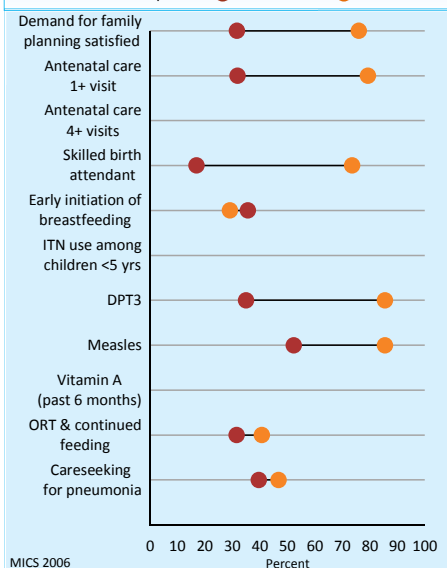


Source: UNICEF/UNAIDS/WHO

EQUITY

Socioeconomic inequities in coverage

Household wealth quintile: ● Poorest 20% ● Richest 20%



MICS 2006

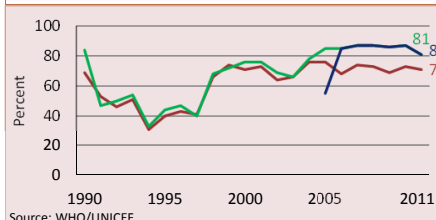
Coverage levels are shown for the poorest 20% (red circles) and the richest 20% (orange circles). The longer the line between the two groups, the greater the inequality. These estimates may differ from other charts due to differences in data sources.

Developed by Countdown to report on core indicators identified by the UN Commission on Information and Accountability, in support of the Global Strategy for Women's and Children's Health

CHILD HEALTH

Immunization

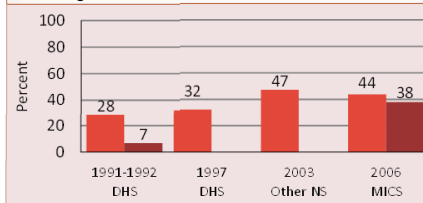
■ Percent of children immunized against measles
■ Percent of children immunized with 3 doses DTP
■ Percent of children immunized with 3 doses Hib



Source: WHO/UNICEF

Pneumonia treatment

■ Percent children <5 years with suspected pneumonia taken to appropriate health provider
■ Percent children <5 years with suspected pneumonia receiving antibiotics

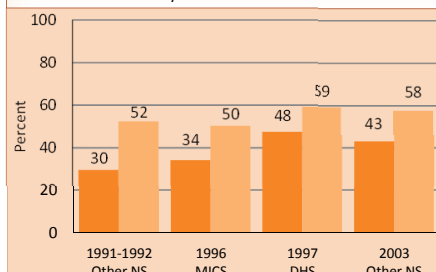


NUTRITION

Wasting prevalence (moderate and severe, %) 15 (2003)
Low birthweight incidence (moderate and severe, %) -

Underweight and stunting prevalence

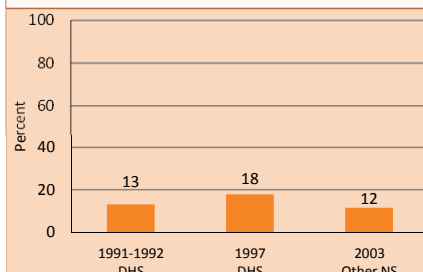
■ Percent children <5 years who are underweight
■ Percent children <5 years who are stunted



Note: Based on 2006 WHO reference population

Exclusive breastfeeding

Percent infants <6 months exclusively breastfed





Countdown to 2015

Maternal, Newborn & Child Survival

Zambia

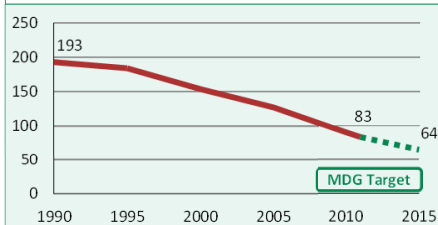
May 2013

DEMOGRAPHICS

| | | |
|--|--------|--------|
| Total population (000) | 13,475 | (2011) |
| Total under-five population (000) | 2,510 | (2011) |
| Births (000) | 622 | (2011) |
| Birth registration (%) | 14 | (2007) |
| Total under-five deaths (000) | 46 | (2011) |
| Neonatal deaths: % of all under-5 deaths | 37 | (2011) |
| Neonatal mortality rate (per 1000 live births) | 27 | (2011) |
| Infant mortality rate (per 1000 live births) | 53 | (2011) |
| Stillbirth rate (per 1000 total births) | 26 | (2009) |
| Total maternal deaths | 2,600 | (2010) |
| Lifetime risk of maternal death (1 in N) | 37 | (2010) |
| Total fertility rate (per woman) | 6.3 | (2011) |
| Adolescent birth rate (per 1000 women) | 151 | (2005) |

Under-five mortality rate

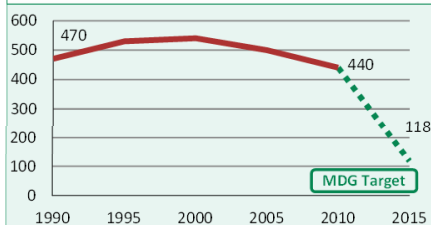
Deaths per 1000 live births



Source: IGME 2012

Maternal mortality ratio

Deaths per 100,000 live births

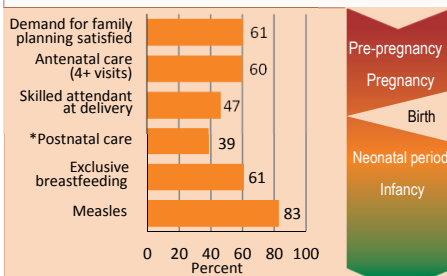


Source: MMEIG 2012

Note: MDG target calculated by Countdown to 2015.

MATERNAL AND NEWBORN HEALTH

Coverage along the continuum of care

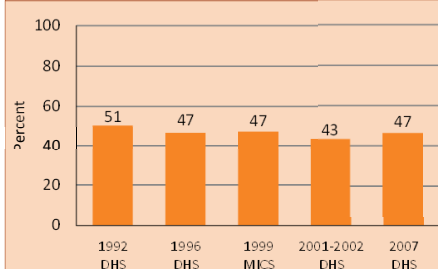


Source: DHS, MICS, Other NS

* See Annex/website for indicator definition

Skilled attendant at delivery

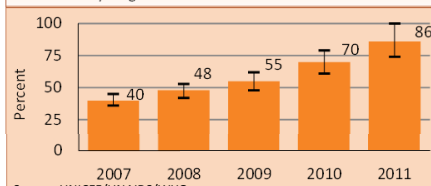
Percent live births attended by skilled health personnel



Prevention of mother-to-child transmission of HIV

Eligible HIV+ pregnant women receiving ART for their own health (% of total ARVs)

■ Percent HIV+ pregnant women receiving ARVs for PMTCT
■ Uncertainty range around the estimate

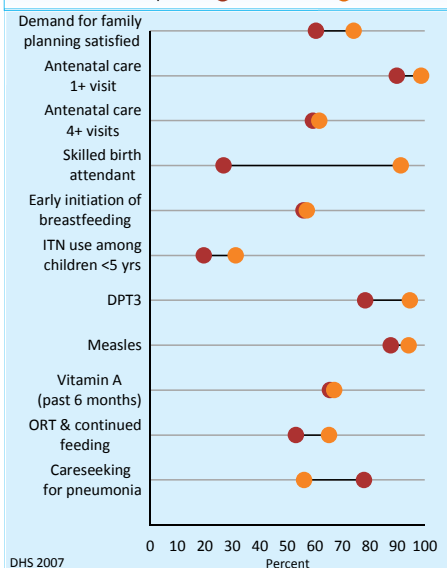


Source: UNICEF/UNAIDS/WHO

EQUITY

Socioeconomic inequities in coverage

Household wealth quintile: ● Poorest 20% ● Richest 20%



DHS 2007

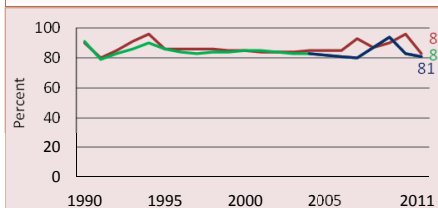
Coverage levels are shown for the poorest 20% (red circles) and the richest 20% (orange circles). The longer the line between the two groups, the greater the inequality. These estimates may differ from other charts due to differences in data sources.

Developed by Countdown to report on core indicators identified by the UN Commission on Information and Accountability, in support of the Global Strategy for Women's and Children's Health

CHILD HEALTH

Immunization

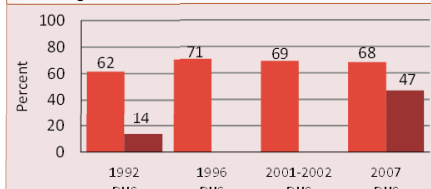
■ Percent of children immunized against measles
■ Percent of children immunized with 3 doses DTP
■ Percent of children immunized with 3 doses Hib



Source: WHO/UNICEF

Pneumonia treatment

■ Percent children <5 years with suspected pneumonia taken to appropriate health provider
■ Percent children <5 years with suspected pneumonia receiving antibiotics

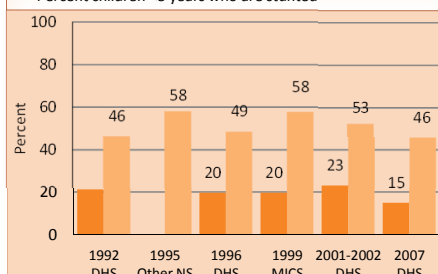


NUTRITION

| | | |
|--|----|--------|
| Wasting prevalence (moderate and severe, %) | 5 | (2007) |
| Low birthweight incidence (moderate and severe, %) | 11 | (2007) |

Underweight and stunting prevalence

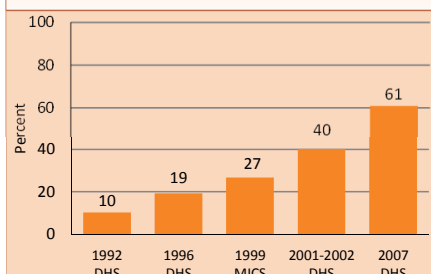
■ Percent children <5 years who are underweight
■ Percent children <5 years who are stunted



Note: Based on 2006 WHO reference population

Exclusive breastfeeding

Percent infants <6 months exclusively breastfed





Countdown to 2015

Maternal, Newborn & Child Survival

Zimbabwe

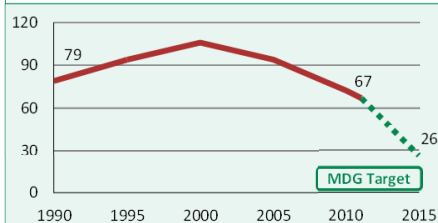
May 2013

DEMOGRAPHICS

| | | |
|--|--------|-------------|
| Total population (000) | 12,754 | (2011) |
| Total under-five population (000) | 1,719 | (2011) |
| Births (000) | 377 | (2011) |
| Birth registration (%) | 49 | (2010-2011) |
| Total under-five deaths (000) | 24 | (2011) |
| Neonatal deaths: % of all under-5 deaths | 46 | (2011) |
| Neonatal mortality rate (per 1000 live births) | 30 | (2011) |
| Infant mortality rate (per 1000 live births) | 43 | (2011) |
| Stillbirth rate (per 1000 total births) | 20 | (2009) |
| Total maternal deaths | 2,200 | (2010) |
| Lifetime risk of maternal death (1 in N) | 52 | (2010) |
| Total fertility rate (per woman) | 3.2 | (2011) |
| Adolescent birth rate (per 1000 women) | 115 | (2010) |

Under-five mortality rate

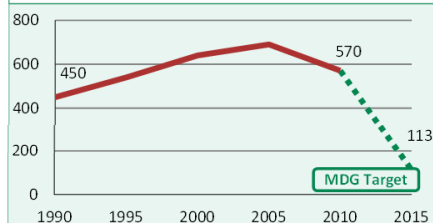
Deaths per 1000 live births



Source: IGME 2012

Maternal mortality ratio

Deaths per 100,000 live births

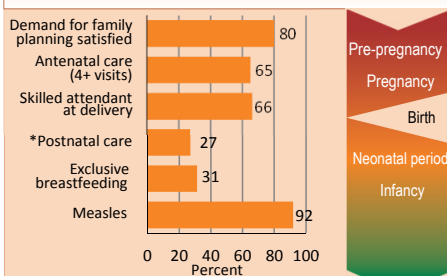


Source: MMEIG 2012

Note: MDG target calculated by Countdown to 2015.

MATERNAL AND NEWBORN HEALTH

Coverage along the continuum of care

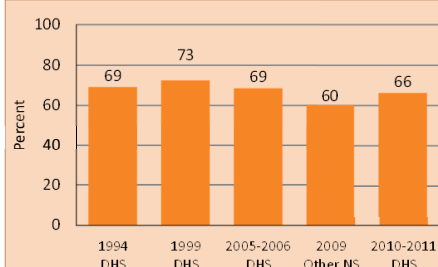


Source: DHS, MICS, Other NS

* See Annex/website for indicator definition

Skilled attendant at delivery

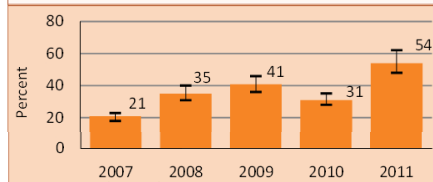
Percent live births attended by skilled health personnel



Prevention of mother-to-child transmission of HIV

Eligible HIV+ pregnant women receiving ART for their own health (% of total ARVs)

■ Percent HIV+ pregnant women receiving ARVs for PMTCT
■ Uncertainty range around the estimate

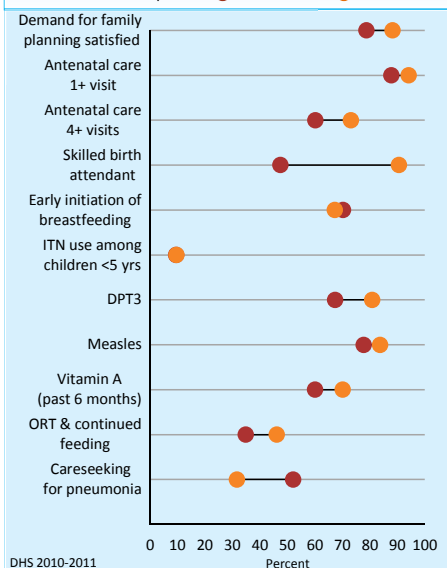


Source: UNICEF/UNAIDS/WHO

EQUITY

Socioeconomic inequities in coverage

Household wealth quintile: ● Poorest 20% ● Richest 20%



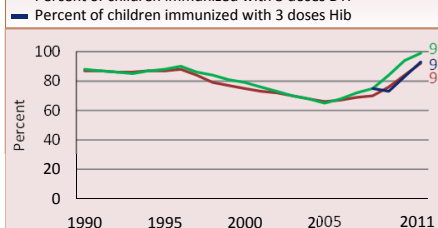
DHS 2010-2011

Coverage levels are shown for the poorest 20% (red circles) and the richest 20% (orange circles). The longer the line between the two groups, the greater the inequality. These estimates may differ from other charts due to differences in data sources.

CHILD HEALTH

Immunization

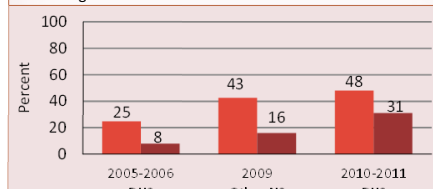
■ Percent of children immunized against measles
■ Percent of children immunized with 3 doses DTP
■ Percent of children immunized with 3 doses Hib



Source: WHO/UNICEF

Pneumonia treatment

■ Percent children <5 years with suspected pneumonia taken to appropriate health provider
■ Percent children <5 years with suspected pneumonia receiving antibiotics



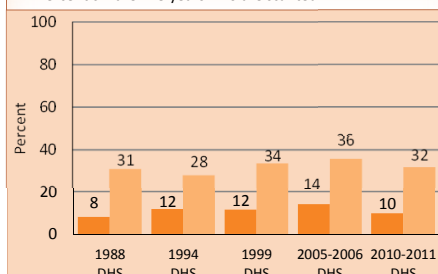
NUTRITION

Wasting prevalence (moderate and severe, %) 3 (2010-2011)

Low birthweight incidence (moderate and severe, %) 11 (2005-2006)

Underweight and stunting prevalence

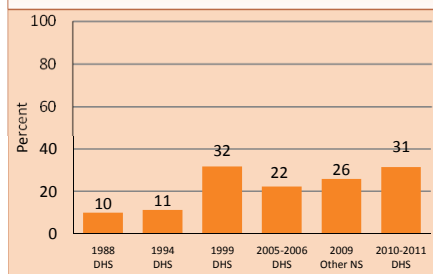
■ Percent children <5 years who are underweight
■ Percent children <5 years who are stunted



Note: Based on 2006 WHO reference population

Exclusive breastfeeding

Percent infants <6 months exclusively breastfed



Developed by Countdown to report on core indicators identified by the UN Commission on Information and Accountability, in support of the Global Strategy for Women's and Children's Health